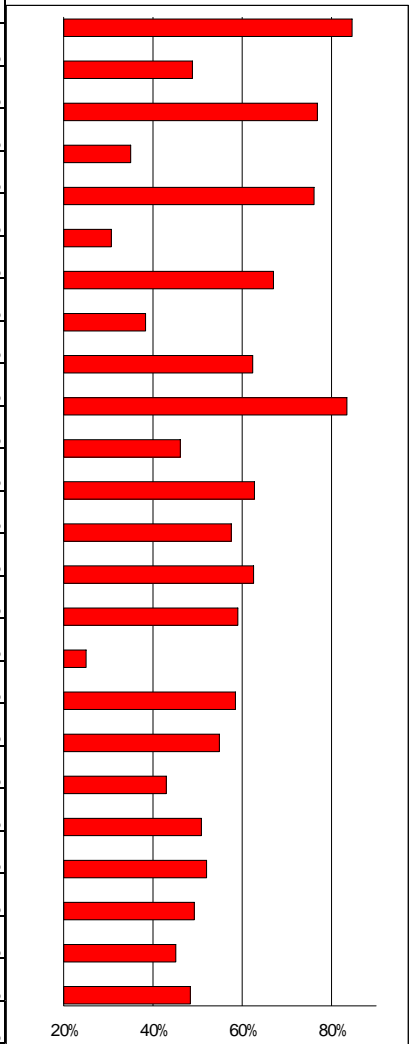


<参考> 昭和26年以降統一地方選挙に関する調

1. 市議会議員選挙に関する調

執行年月日	当日有権者数			投票者数			内期日 前投票	内不在 者投票	投票率 %		
	男	女	計	男	女	計			男	女	計
S.26. 4.23	33,213	36,607	69,820	28,031	31,058	59,089	/	1,306	84.40%	84.84%	84.63%
29. 5.18 (補欠)	38,047	41,011	79,058	19,760	18,850	38,610	/	607	51.94%	45.96%	48.84%
30. 4.30	51,168	54,412	105,580	38,706	42,419	81,125	/	848	75.64%	77.96%	76.84%
33. 4.20 (補欠)	52,546	54,299	106,845	20,545	16,864	37,409	/	553	39.10%	31.06%	35.01%
34. 4.30	63,259	63,963	127,222	46,847	49,968	96,815	/	881	74.06%	78.12%	76.10%
37. 4.22 (補欠)	72,021	72,459	144,480	23,938	20,407	44,345	/	800	33.24%	28.16%	30.69%
38. 4.30	86,737	84,939	171,676	56,088	58,919	115,007	/	1,263	64.66%	69.37%	66.99%
41. 4.24 (補欠)	100,922	99,294	200,216	40,334	36,438	76,772	/	1,146	39.97%	36.70%	38.34%
42. 4.28	115,074	114,657	229,731	67,228	76,030	143,258	/	1,580	58.42%	66.31%	62.36%
44. 8.24 (増員)	2,618	2,759	5,377	2,178	2,309	4,487	/	63	83.19%	83.69%	83.45%
45. 5.17 (再)	151,902	147,553	299,455	69,442	68,723	138,165	/	2,099	45.72%	46.58%	46.14%
46. 4.25	161,868	158,374	320,242	97,571	103,404	200,975	/	2,786	60.28%	65.29%	62.76%
49. 4.21 (補欠)	190,803	188,770	379,573	107,647	110,832	218,479	/	3,662	56.42%	58.71%	57.56%
50. 4.27	203,976	202,647	406,623	123,609	130,679	254,288	/	4,133	60.60%	64.49%	62.54%
54. 4.22	229,155	229,514	458,669	130,493	140,194	270,687	/	4,096	56.95%	61.08%	59.02%
56. 6.14 (補欠)	239,338	240,131	479,469	61,500	58,591	120,091	/	2,542	25.70%	24.40%	25.05%
58. 4.24	246,971	247,706	494,677	138,621	150,748	289,369	/	4,852	56.13%	60.86%	58.50%
62. 4.26	267,777	269,653	537,430	141,248	153,816	295,064	/	6,240	52.75%	57.04%	54.90%
H.元. 6.18 (補欠)	282,946	283,645	566,591	120,609	122,938	243,547	/	5,292	42.63%	43.34%	42.98%
3. 4.21	294,889	294,225	589,114	141,815	157,893	299,708	/	7,503	48.09%	53.66%	50.87%
7. 4. 9	321,137	317,233	638,370	158,685	173,317	332,002	/	11,286	49.41%	54.63%	52.01%
11. 4.11	337,085	335,185	672,270	161,065	170,164	331,229	/	23,762	47.78%	50.77%	49.27%
15.4.13	293,429	292,141	585,570	127,009	137,204	264,213	/	19,760	43.28%	46.96%	45.12%
19.4.8	362,740	365,337	728,077	170,392	181,794	352,186	37,063	1,939	46.97%	49.76%	48.37%



2. 県議会議員選挙に関する調

執行年月日	当日有権者数			投票者数			内期日 前投票	内不在 者投票	投票率 %		
	男	女	計	男	女	計			男	女	計
S.26. 4.30	33,188	36,578	69,766	22,081	22,304	44,385	/	972	66.53%	60.98%	63.62%
30. 4.23	50,837	54,034	104,871	30,326	29,496	59,822	/	713	59.65%	54.59%	57.04%
34. 4.23	61,885	62,692	124,577	39,750	38,925	78,675	/	797	64.23%	62.09%	63.15%
38. 4.17	82,716	80,733	163,449	51,046	50,369	101,415	/	994	61.71%	62.39%	62.05%
42. 4.15	115,720	115,194	230,914	65,124	69,146	134,270	/	1,563	56.28%	60.03%	58.15%
45. 6. 7	153,699	149,305	303,004	37,029	33,808	70,837	/	1,414	24.09%	22.64%	23.38%
46. 4.11	162,934	159,133	322,067	92,644	93,683	186,327	/	2,713	56.86%	58.87%	57.85%
50. 4.13	203,389	202,011	405,400	130,467	133,068	263,535	/	3,251	64.15%	65.87%	65.01%
54. 4. 8	231,685	231,705	463,390	127,003	131,565	258,568	/	3,634	54.82%	56.78%	55.80%
58. 4.10	249,604	250,041	499,645	120,204	127,529	247,733	/	3,673	48.16%	51.00%	49.58%
62. 4.12	269,572	271,276	540,848	128,685	135,239	263,924	/	5,660	47.74%	49.85%	48.80%
H. 3. 4. 7	299,409	297,801	597,210	126,449	134,727	261,176	/	6,474	42.23%	45.24%	43.73%
7. 4. 9	321,137	317,233	638,370	158,607	173,268	331,875	/	11,279	49.39%	54.62%	51.99%
11. 4.11	337,085	335,185	672,270	161,047	170,159	331,206	/	23,791	47.78%	50.77%	49.27%
15.4.13	281,202	292,141	562,460	127,009	137,204	251,312	/	19,393	43.02%	46.35%	44.68%
19.4.8	303,195	305,506	608,701	143,709	153,011	296,720	30,595	1,478	47.40%	50.08%	48.75%

