

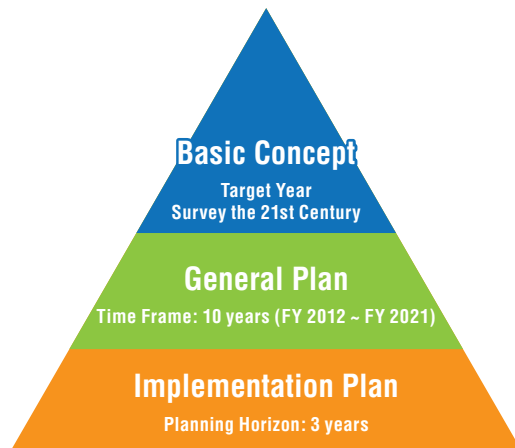
Chiba City New General Plan



City of Chiba

The Chiba City New General Plan is

The Chiba City New General Plan provides the basic outline of future medium-to-long term local government operations, looking ahead to the next 10 and 20 years and how to develop a countermeasure on how to deal with the turning point within the city's social structure regarding the declining birthrate, aging population, and population decline, in a way to make sure Chiba City's future is bright and rich.



Basic Concept

- The basic concept (voted on in December 1999) serves as a municipal management guide that provides fundamental principles & objectives along with an explanation of the desired urban appearance of permanent urban development that will remain the same, even in rapidly changing times.

[Basic Principle] Respecting People • Prioritizing Civilian Life

[Basic Target] People & the City For a city that freshly sparkles with happiness.

[Desired Appearance of the City]

- ① Chiba City • A City where you can feel close to nature
- ② Chiba City • A City where you can live healthily & in peaceably
- ③ Chiba City • A peaceful and comfortable city
- ④ Chiba City • A City that breeds abundant creativity
- ⑤ Chiba City • A City with lively vitality
- ⑥ Chiba City • A City we can build together

General Plan

- To achieve the basic objectives set forth in the basic concept, the general plan lays out a basic policy that illustrates the direction that urban development should progress & the personality of the city that should be implemented, and also to indicate the direction of future expansion measures.

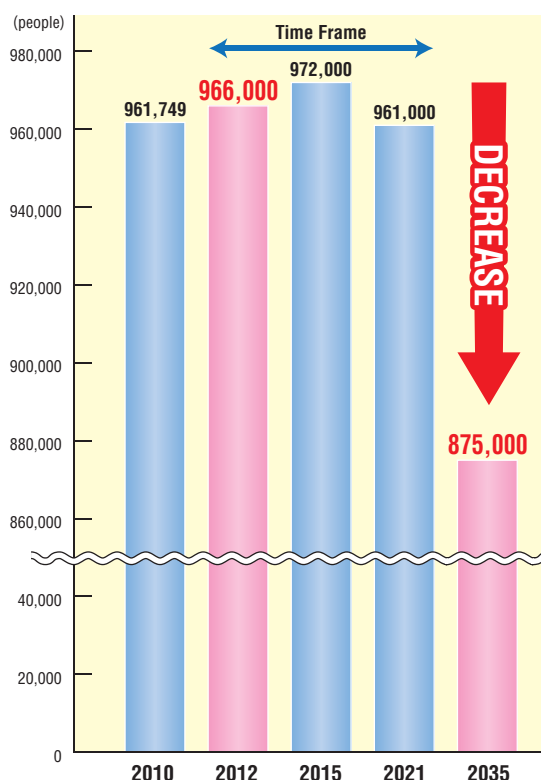
Implementation Plan

- The implementation plan exhibits concrete projects based on the master plan.

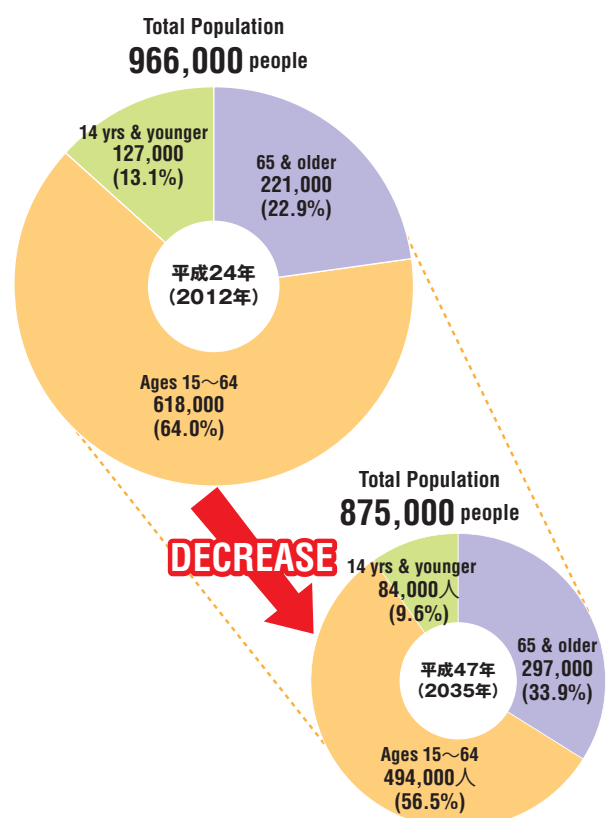
General Outlook of Chiba City

The population of the city is projected to peak in 2015 at around 970,000 people. The breakdown of the population predicts the population ratio of people 65 years and older to increase immensely to the point that by the year 2035, 1 in every 3 people will be 65 years or older.

Outlook of the Chiba City Total Population



Population Decrease and Population Outlook of 3 Age Groups



Critical Issues of Urban Development

Five major issues surfaced after thinking about the urban development of the next 10 and 20 years.



Responding to a Society's Population Decline

- In order to slow the population decrease and balance out the age-population ratio, it is essential to develop the appeal of the city so that people will want to live, work, and visit Chiba City.
- Together with preventing anymore diffusion of the urban areas in the city, it is essential to strive for a conversion of urban development by means of intensifying the city's functions to allow for the coexistence of comfortable life for the citizens and efficient city management.



Responding to the Declining Birthrate and Aging Population

- Regarding the energetic & healthy elderly population, it is important to promote an environment where they can continuously live energetically & healthily and to accurately provide assistance to those who need nursing care and assistance.
- Regarding the declining birthrate, it is important to promote the development of an environment where the citizens feel at ease about having children and raising them here.
- It is important that we provide support focusing on helping healthy elderly people to live active, independent lives so that we can create city development strength through the power of all citizens.



Responding to Environmental Issues

- From the viewpoint of conducting eco-friendly urban development, it is important to steadily strive to promote the 3 Rs and the continuous reduction of greenhouse gases.
- In order to harmonize with nature, it is important to keep in mind the harmony of city functions and nature together with protecting & nurturing this city's natural resources.



Supporting a Global Society

- Together with fostering talented people who can play an active role with a global outlook and providing an environment where corporations can exhibit each of their strengths, it is important to promote cooperation with superiors and corporations, including those from other foreign countries.
- To ensure a comfortable & efficient transportation of people & objects, it is important to have an efficient comprehensive transportation network.
- As support for the information network society, it is also important to provide administrative services that truly show the convenience of ICT (Information & Communications Technology) in civilians' lives.



Independent/Decentralized Form of City Management

- It is essential to strive for financial and administrative operations that are both effective and deliberate.
- We also need to cooperate with other governing bodies & businesses to push forward facility management, etc. from a medium-to-long-term viewpoint.
- Along with supporting urban development activities of the citizens & NPOs, it is important that we strive to strengthen cooperation by having administrations actively carry out coordination functions with each other.

Urban Development Concept

As a guideline for citizens, parties, corporations, colleges, and other various entities to share in furthering urban development together, an "urban development concept" will be established. Under this concept, beginning from each citizen, we can push forward with urban development focused on the future.

From Me! Urban Development that Connects to the Future

Focusing on the future 10 years, 20 years,
From me! Begin. From me! Expand.
This type of "self" power of each person
Ties into "The Power of Urban Development Support."
Make Chiba a place that is easy to live in and overflowing with appeal & vitality
Come on, let's get started!



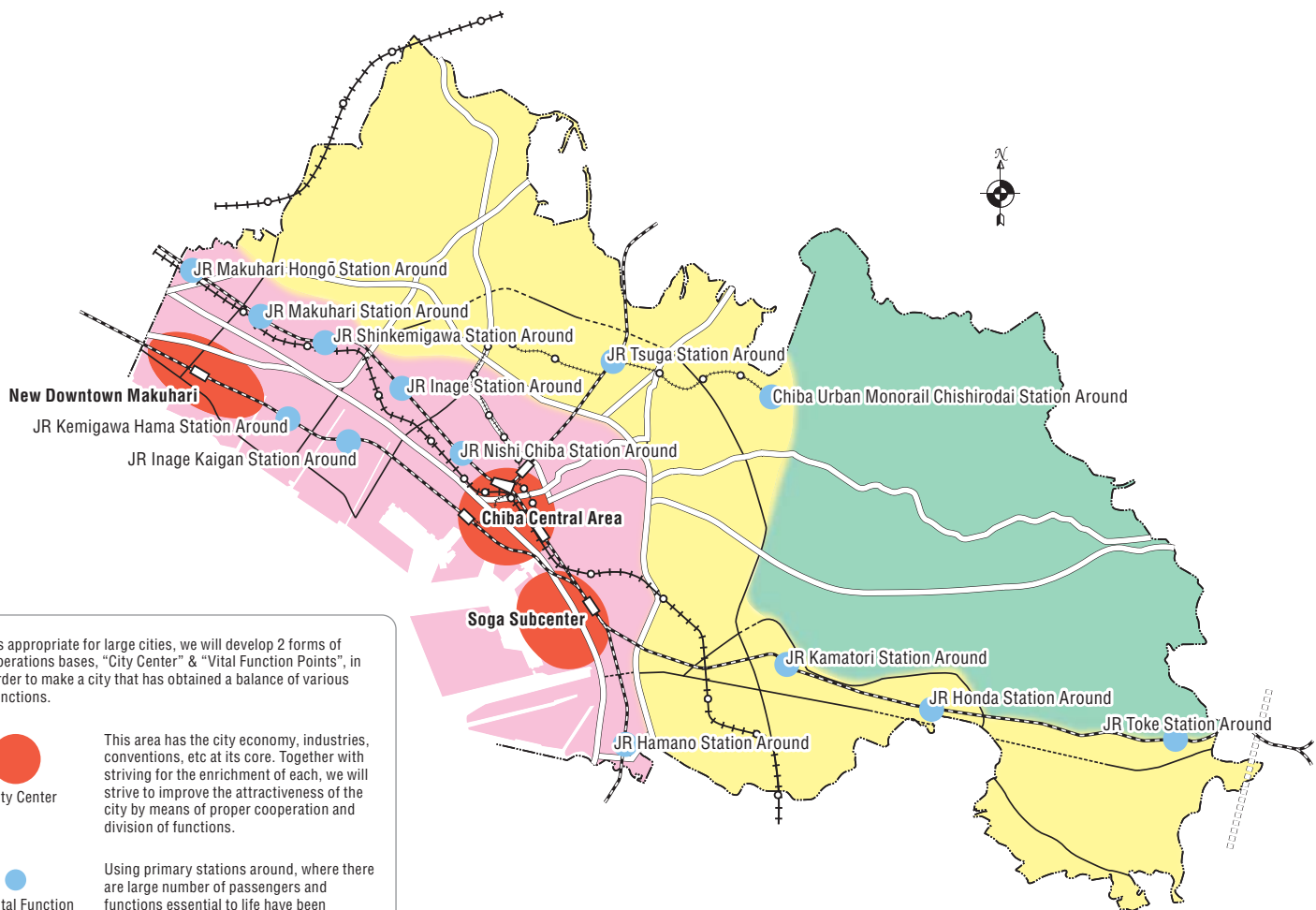
Structure of the City We Should Aim For

Using conversions for “intensive city organization,” such as building including businesses and commercial establishments are essential for daily life and such facilities should be built within reach. As a foundation, we will think about land use & city functions as we move forward.

Basic Image of Intensive City Organization

The long term basic idea behind the “Intensive City Organization” of Chiba City is to turn Chiba City into a place that has an excellent transportation system with many different facilities based around the train stations, making public transportation extremely convenient to the point where you can live here without using a car.

Based on this idea, we will brainstorm with all citizens to determine what type of appearance we need in order to achieve this goal.



As appropriate for large cities, we will develop 2 forms of operations bases, “City Center” & “Vital Function Points”, in order to make a city that has obtained a balance of various functions.



City Center

This area has the city economy, industries, conventions, etc at its core. Together with striving for the enrichment of each, we will strive to improve the attractiveness of the city by means of proper cooperation and division of functions.



Vital Function Bases

Using primary stations around, where there are large number of passengers and functions essential to life have been incorporated, as “vital function points,” we will work to improve the convenience of transportation & to enhance commercial functions.

City Personality that Should Be Implemented

Aim for the materialization of three “City Personality Traits,” and construct a city that has crossed into the future, overflowing with energy and appeal.



A City that Produces People Capable of Creating the Future

For instance, the following type of city

- Preparing an environment where younger people can feel at ease about having children and raising them because there are many parenting services provided and a livable environment is regulated.
- Through the education system, children are raised to have minds where they think for themselves, are well-behaved, and are social.
- Raising people who can carry the weight of the future economy on their shoulders, by means of enhancing the opportunities to be familiar with science & technology.



A City Where Everyone Supports Each Other

For instance, the following type of city

- Together with getting the citizens and organizations actively involved with urban development, the coordination of various urban development activities is being strengthened.
- Region exchanges are actively taking place at the community center & public hall, schools, etc.
- All types of people, from the young to the old & to the handicapped, first understand each other and then support each other.



A City People Want to Visit &/or Live In

For instance, the following type of city

- In places such as Inage Beach, Chiba Port, the Soga Coastal Region, etc, activity utilizing the sea is born and the citizens can connect with and get to know greenery and the water.
- New industries are emerging, the number of work places is increasing, and the local economy is being revitalized
- Along with broadening lively interactions with sports at the center, the environment is being enriched so you can get to know more about history, culture, and art.

Urban Development Courses of Action

Under the “The Concept of Urban Development,” in order to correspond to the many issues at hand, beginning with “The Key Issues of Urban Development,” we will assess five “Urban Development Courses of Action” as well as the “Urban Development Support Power,” which will support the propulsion of these five courses of action.

About the “Urban Develop Support Power”

In the near future, as the population of Chiba City decreases and the declining birthrate & aging of society continues, the ability of advancing with urban development only through the government is extremely limited.

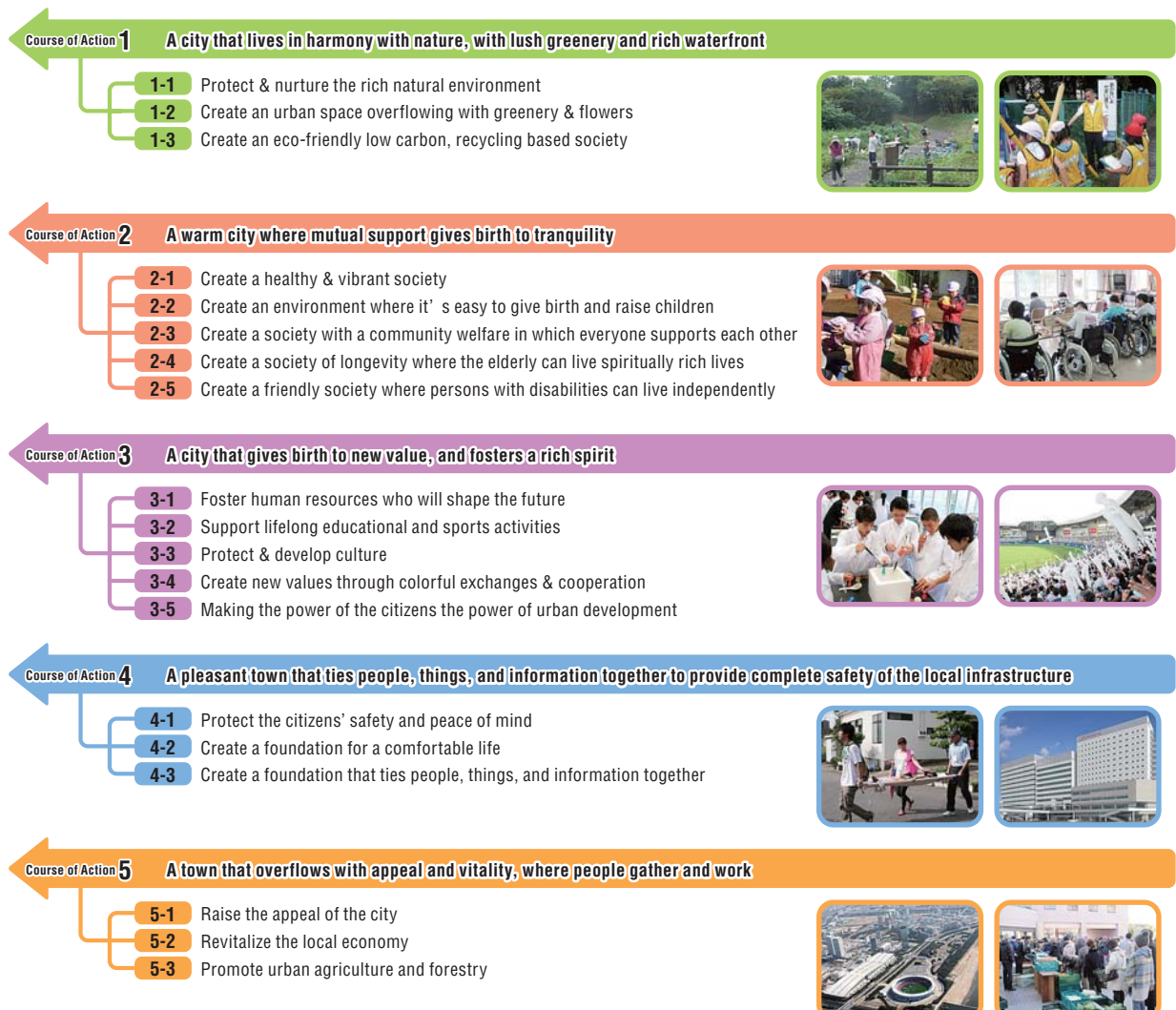
Therefore, returning the origin to residents’ associations where individuals build their city by everyone working together to solve the city’s problems, from now on the thought process for urban development in converting to the idea that “Urban Development begins with each individual citizen.”

That is, the idea of fostering a major force in urban development by means of the government joining together with the actions of each individual citizen and everyone’s cooperation. The citizens, groups, businesses, colleges, and the government will cooperate and share the role as the bearers of urban development. By doing this, little by little we can create “urban development reserved strength,” which will enable us to support future urban development.



Plan Divided by Fields

Based on the “Urban Development Courses of Action,” we will establish policy regarding current state and issues of the different fields, along with the future courses of action for expansion measures.



Ward General Plan

We have created a plan that lays out the courses of action to be taken to work towards urban development that keeps the special qualities of each ward alive, creating a closer connection between the citizens and their respective wards.



Basic Concept

Basic Principles of Municipal Management,
Basic targets of City Development

General Plan

City General Plan

Medium- and Long-term guide
for Municipal Management

Ward General Plan

Courses of Action for Ward
Urban Development

Positioning of the Ward General Plan

- The City General Plan takes the basic principles published in the Chiba City General Concept, as well as the general targets of city development, and lays out the courses of action for urban development in the city as a whole.
- Whereas the Ward General Plan is based on the “Important Issues of Urban Development” & the “Fundamental Policy of Urban Development” of the City General Plan

Chuo Ward General Plan



Vision of the Ward's Future

Chuo Ward A City Where You Can Feel the Kindness of the People
Within the Bustle of the City

Expansion Measures
Courses of Action

- 1 Create a safe and peaceful Chuo Ward
- 2 Create a Chuo Ward Where Everyone's Support Makes Life Easy
- 3 Create a Chuo Ward With Appeal that Serves as the Face of Chiba
- 4 Create a Chuo Ward Filled with Vitality & Prosperity
- 5 Create a Chuo Ward through Everyone's Strength



Hanamigawa Ward General Plan



Vision of the Ward's Future

Hanamigawa Ward A City In Which Everyone's Strength
Makes the Rivers & Greenery Shine

Expansion Measures
Courses of Action

- 1 A City that Blossoms from Rich Culture & Nature
- 2 A City that Blooms from the Smiles of the Children & Elderly
- 3 A City that Blossoms from Safety & Peace of Mind
- 4 A City that Blooms from Links from Heart to Heart
- 5 A City that Blossoms with Energy & Prosperity



Inage Ward General Plan



Vision of the Ward's Future

Inage Ward An Educational City Overflowing with Joy & Compassion
Where People, Regions, and Culture are Exchanged

- 1 Developing a City where People are Kind & Anyone can Live Safely & Peacefully <Safety/Peace>
- 2 Developing a City of Well-being where Generations Support Each Other with Good Rich Hearts <Well-Being>
- 3 Develop a Good Place to Live, that is Nature/Environment Friendly & Overflows with Greenery <Environment>
- 4 Develop a City that Fosters Vibrant Industries Rooted in the Liveliness of the neighborhood <Industry>
- 5 Develop a City that Shines from Valuing the Culture & Traditions of the Region, and the People & Schools Actively Interact <Culture/Education>

Expansion Measures
Courses of Action



Wakaba Ward General Plan



Vision of the Ward's Future

Wakaba Ward A City that is Proud of its Energy & Vitality
And Makes the Most of its Rich Nature & Local Resources

- 1 Develop a City that is Carried by Each Individual Ward Citizen
- 2 Develop a City Where Everyone Supports & Nurtures Each Other
- 3 Develop a City Where You Can Live Conveniently & Peacefully
- 4 Develop a City that has Love & Pride

Expansion Measures
Courses of Action



Midori Ward General Plan

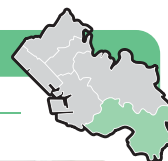


Vision of the Ward's Future

Midori Ward A City that Keeps Alive the Special Qualities of its Rich Nature & Land
Where Everyone Wants to Live & Help Each Other

- 1 Urban Development through the Interactions & Help of Different Generations
- 2 Urban Development that Keeps the Greenery Alive
- 3 Urban Development that Makes Raising Kids Easy
- 4 Urban Development of a Livable Place Where People Want to Continue Living
- 5 Urban Development that Keeps Alive the Special Qualities of the Land

Expansion Measures
Courses of Action



Mihama Ward General Plan



Vision of the Ward's Future

Mihama Ward A City with a Beautiful Seaside & Various Exchanges
Overflowing with the Liveliness & Prosperity Created by Everyone
~Aiming for a City Where People Want to Try Living In and Try Staying a Long Time~

- 1 Develop a City with the Prosperity of Utilizing the Seaside
- 2 Develop a City that has Appealing Comfort
- 3 Develop a City Where Anyone can Actively Lead a Safe & Peaceful Life
- 4 Develop a Prosperous City Where Interactions Take Place Outside Each Generations & Systems

Expansion Measures
Courses of Action

