

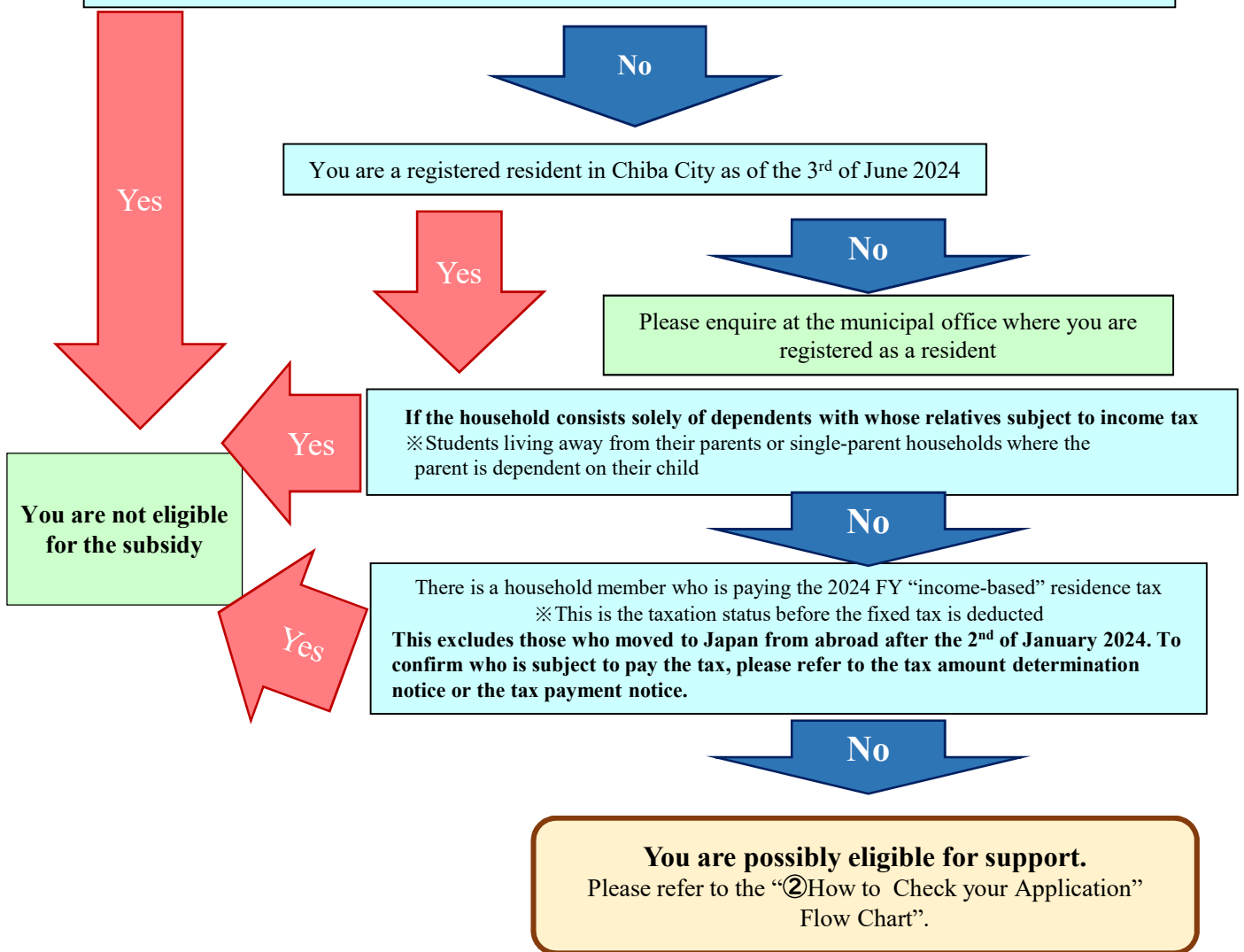
## ① Eligibility Flow Chart

### Households Eligible for the 2023 FY Chiba City Priority Support Subsidy for Rising Prices, Including those who are or were Head of the Household

※Households as of the 3/6/2024

#### Households that are eligible for the 2023 FY Chiba City Priority Support Subsidy for Rising Prices

- 【Tax Exempt Households】 Households which received the 70,000 yen subsidy after the end of January 2024.
- 【Households Taxed Only Per Capita】 Households which received the 100,000 yen subsidy after the end of March 2024.
- Please answer “yes” below even if you are eligible for a similar subsidy in a different municipality.
- Please answer “yes” below even if you have not yet applied for or have been declined this subsidy.



※ This is a reference chart only.

If you need to change your address, household status, submit an amended tax return or change any personal information, please contact the call centre at 0120-592-028.