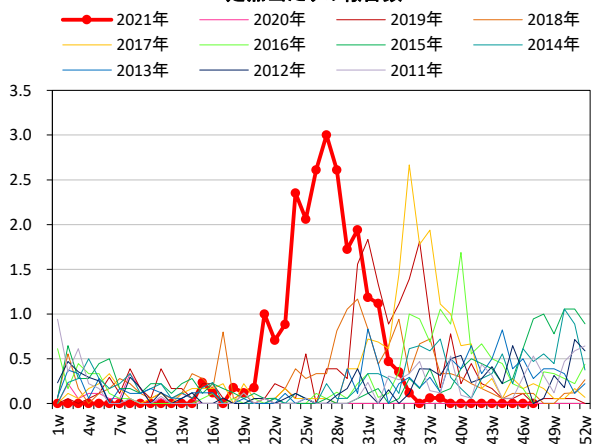


過去10年との比較グラフ(2021年)

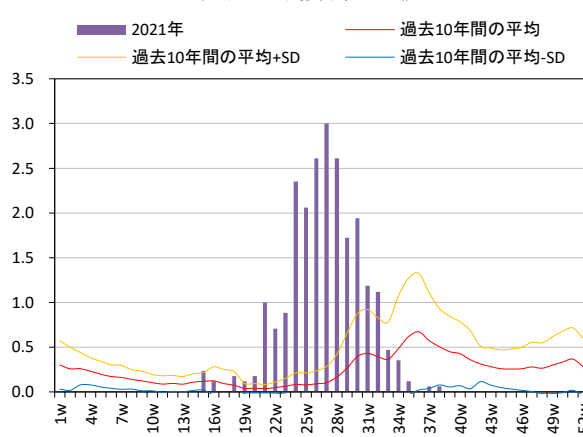
第47週(2021.11.28)まで

RSウイルス感染症(基準値なし)

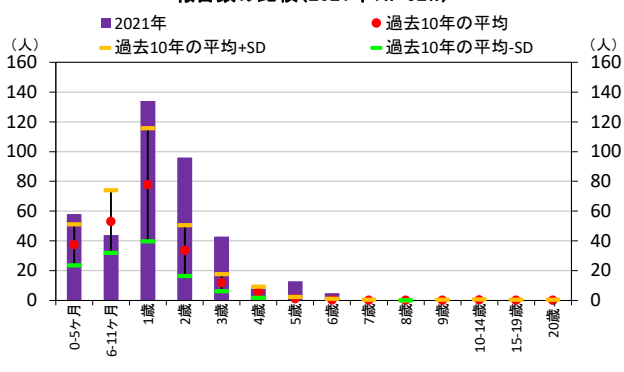
定点当たりの報告数



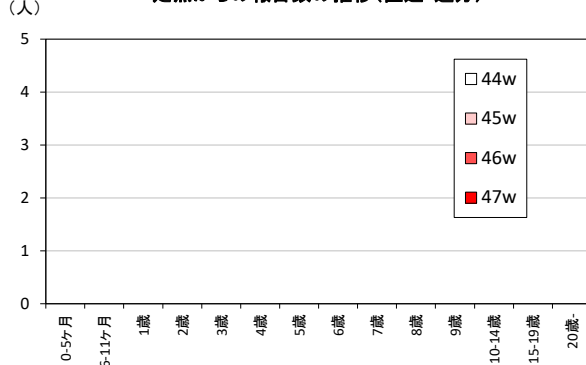
定点当たり報告数の比較



報告数の比較(2021年1w-52w)

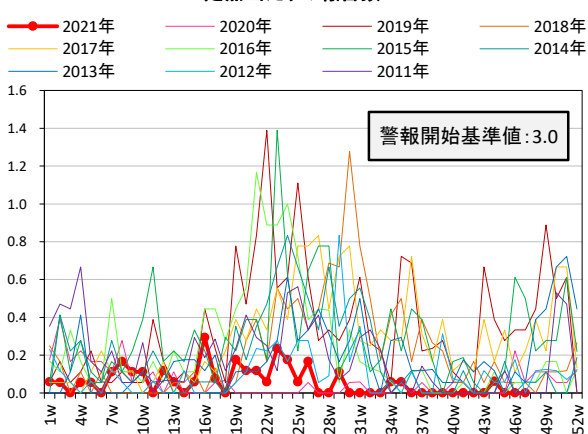


定点からの報告数の推移(直近4週分)

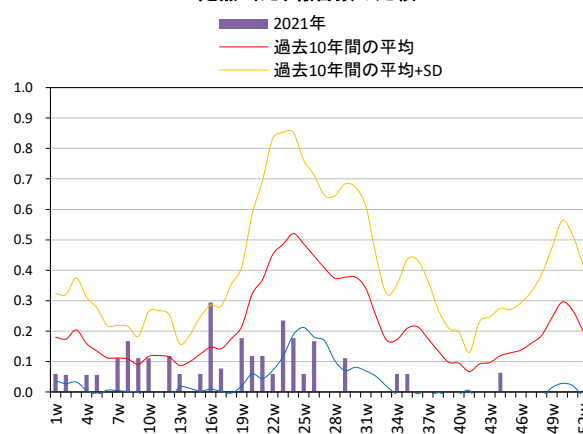


咽頭結膜熱

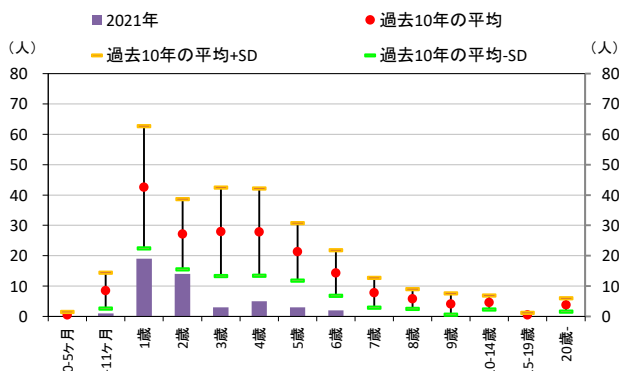
定点当たりの報告数



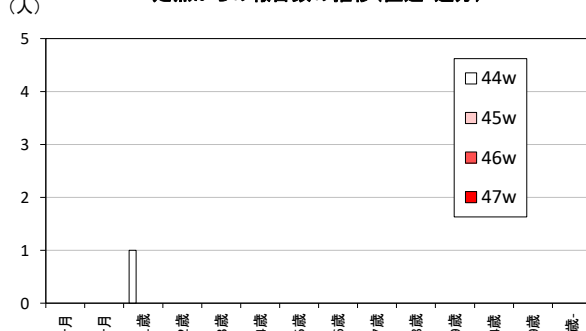
定点当たり報告数の比較



報告数の比較(2021年1w-52w)

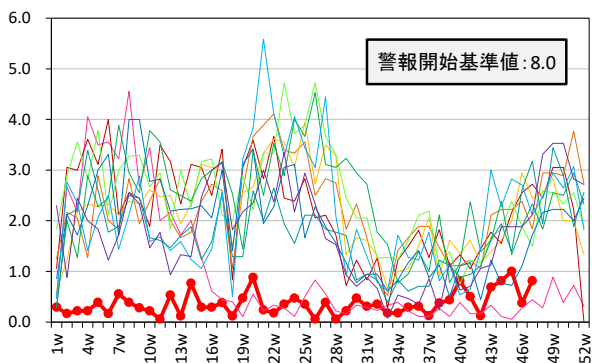
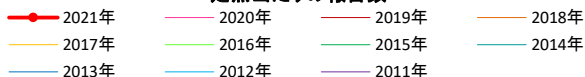


定点からの報告数の推移(直近4週分)

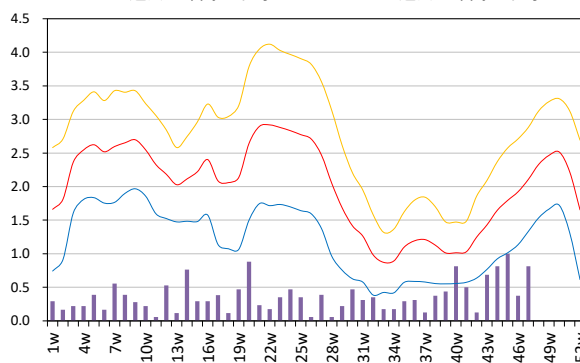
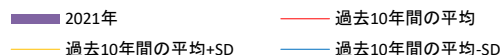


A群溶血性レンサ球菌咽頭炎

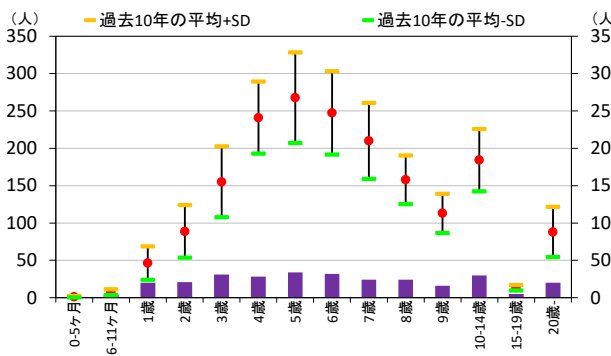
定点当たりの報告数



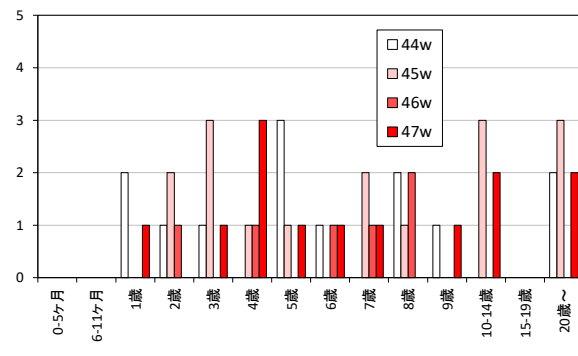
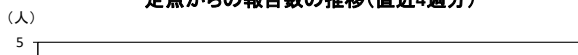
定点当たり報告数の比較



報告数の比較(2021年1w-52w)

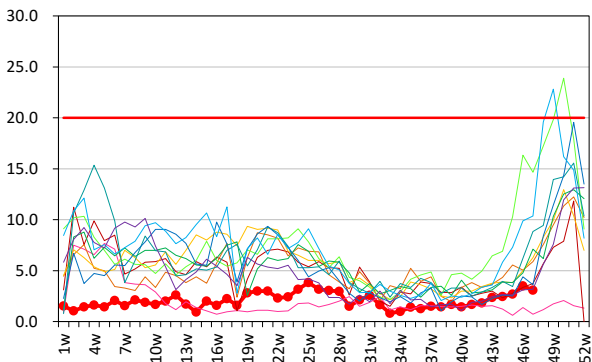


定点からの報告数の推移(直近4週分)

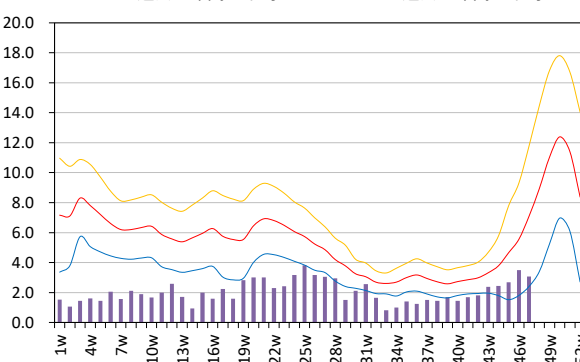
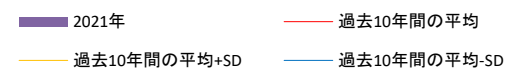


感染性胃腸炎

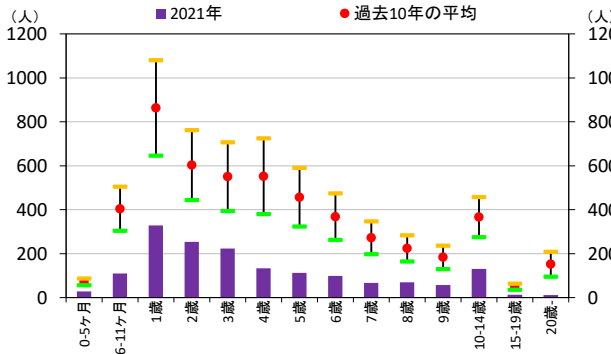
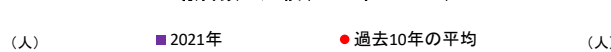
定点当たりの報告数



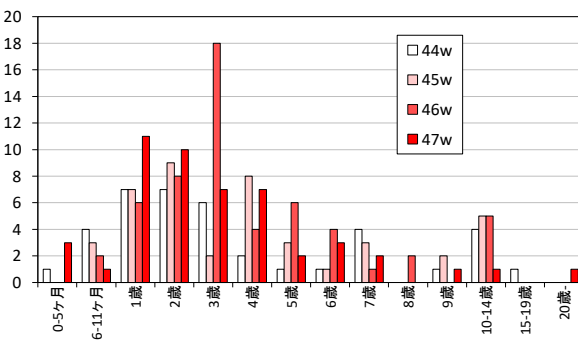
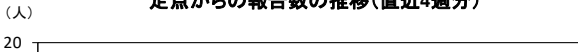
定点当たり報告数の比較



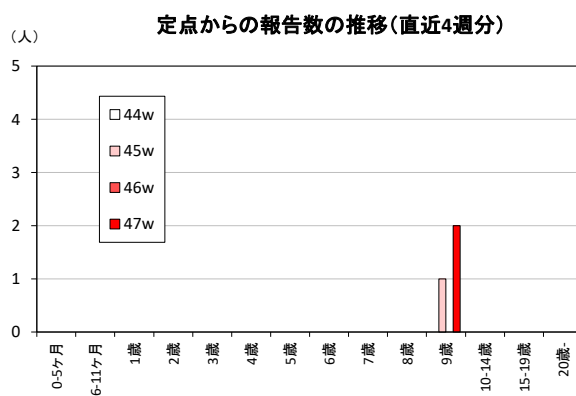
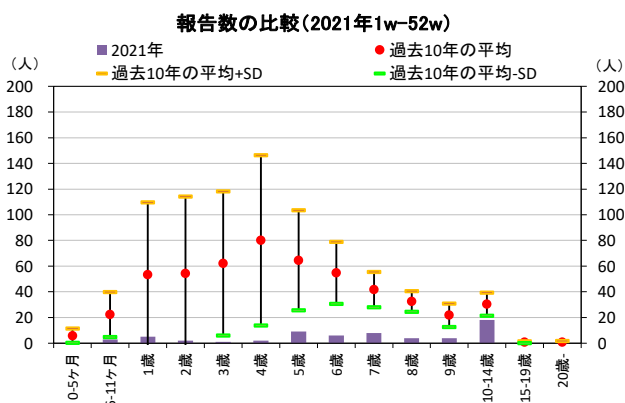
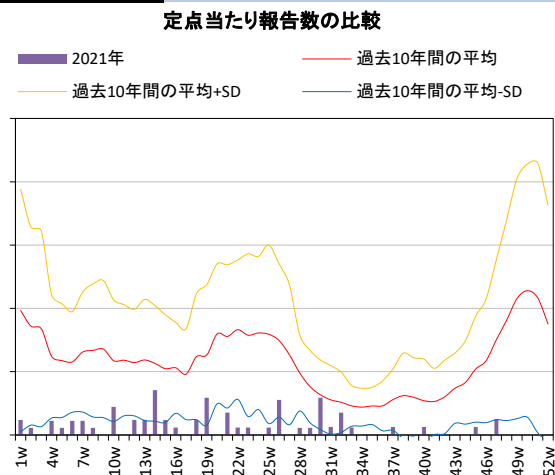
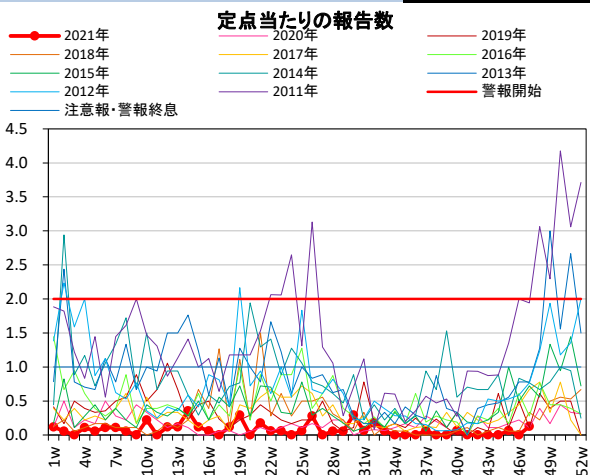
報告数の比較(2021年1w-52w)



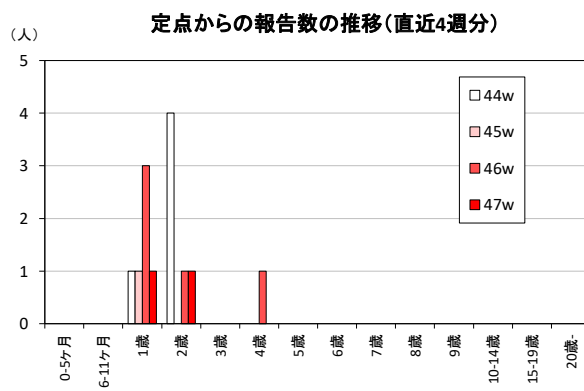
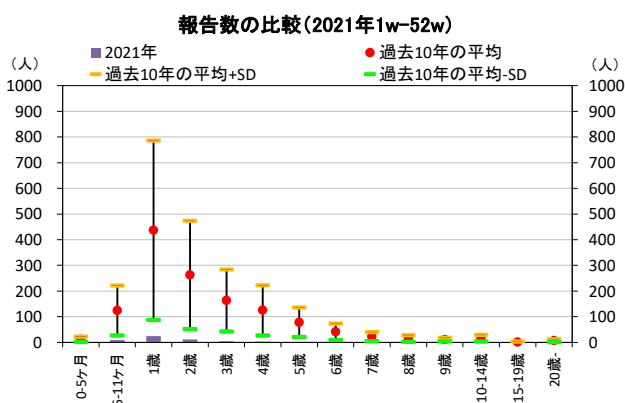
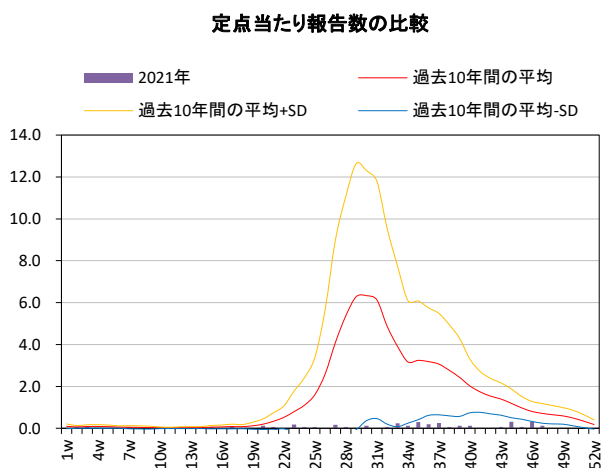
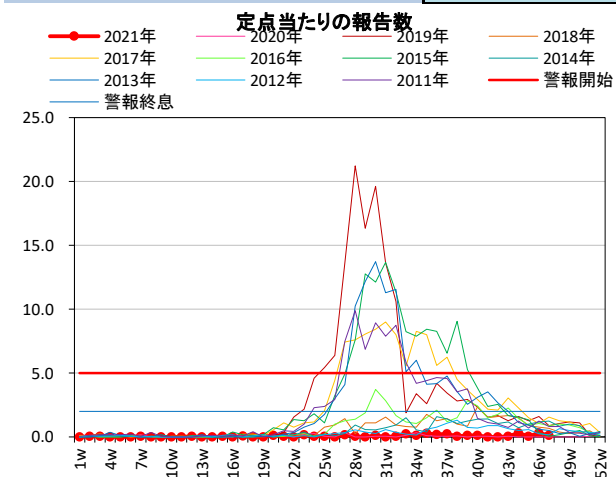
定点からの報告数の推移(直近4週分)



水痘

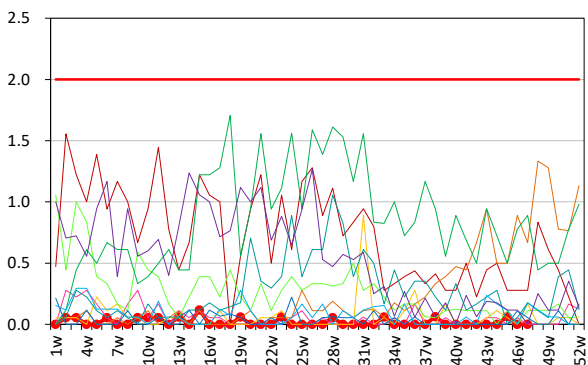


手足口病

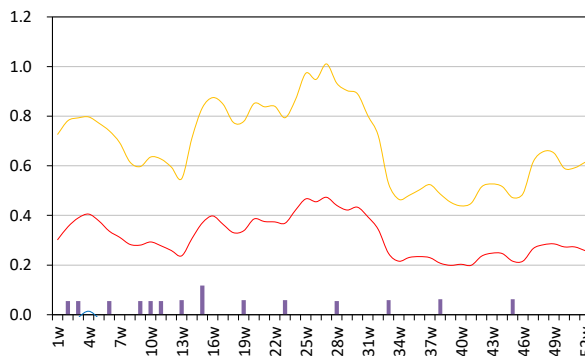


伝染性紅斑

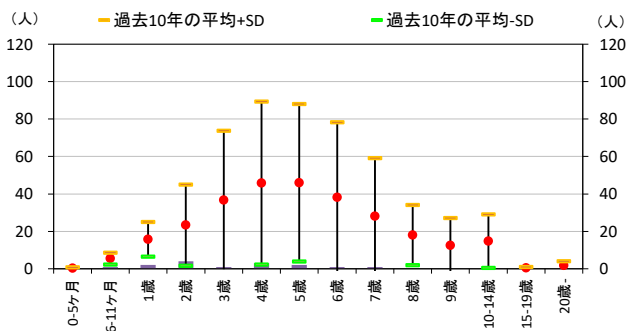
定点当たりの報告数



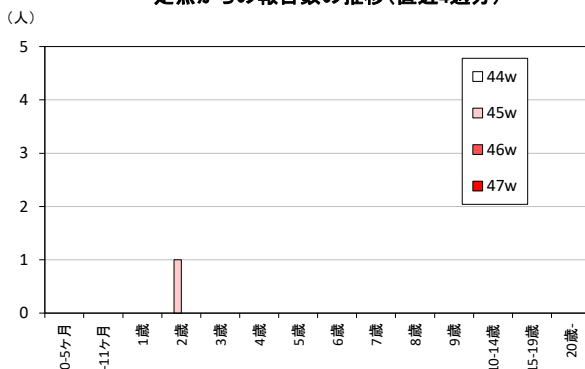
定点当たり報告数の比較



報告数の比較(2021年1w-52w)

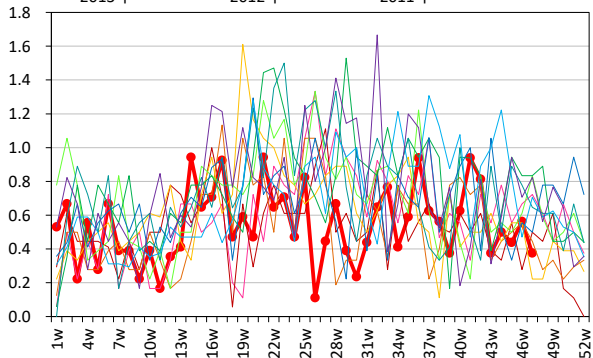
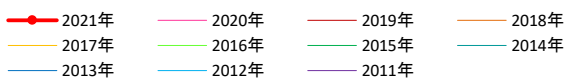


定点からの報告数の推移(直近4週分)

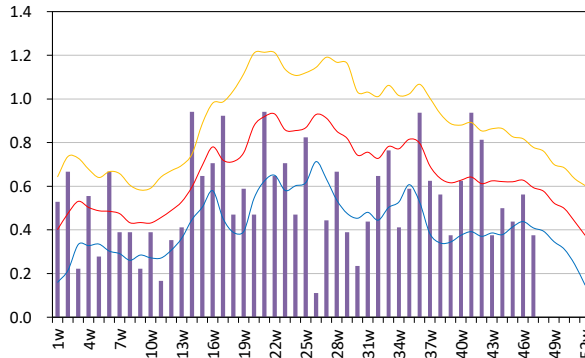
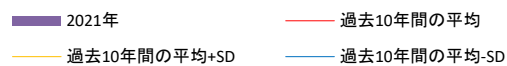


突発性発しん(基準値なし)

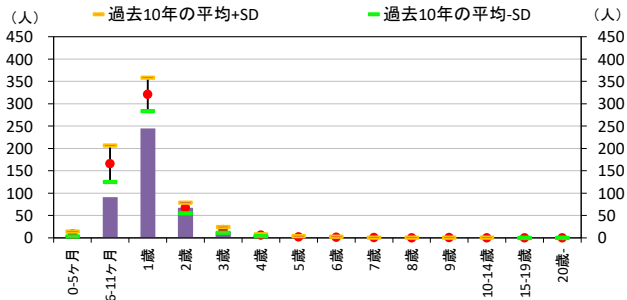
定点当たりの報告数



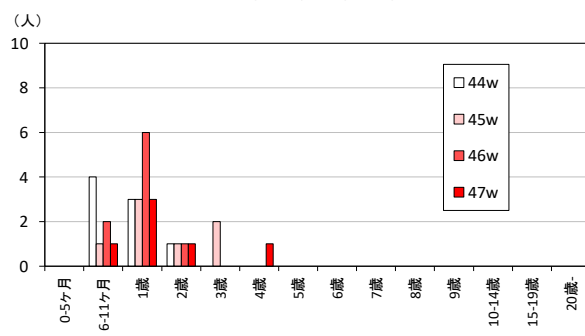
定点当たり報告数の比較



報告数の比較(2021年1w-52w)

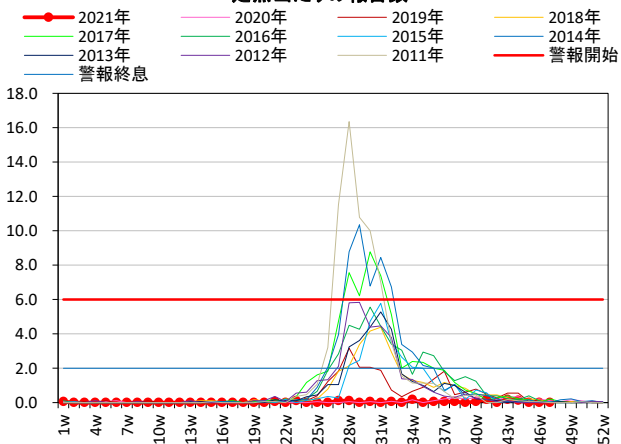


定点からの報告数の推移(直近4週分)

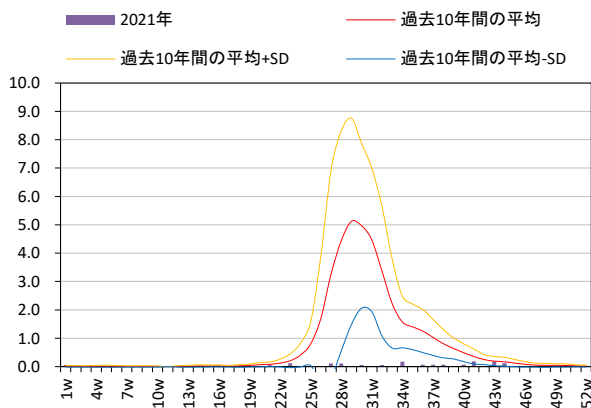


ヘルパンギーナ

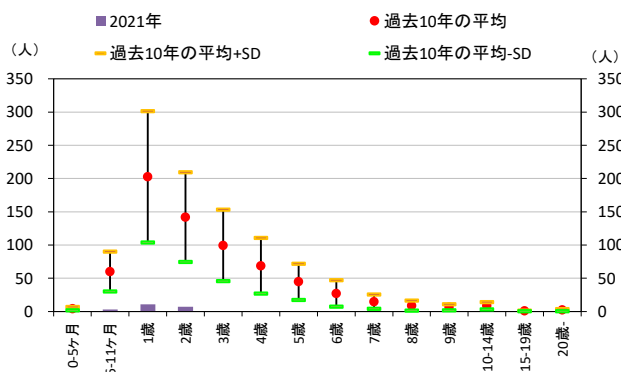
定点当たりの報告数



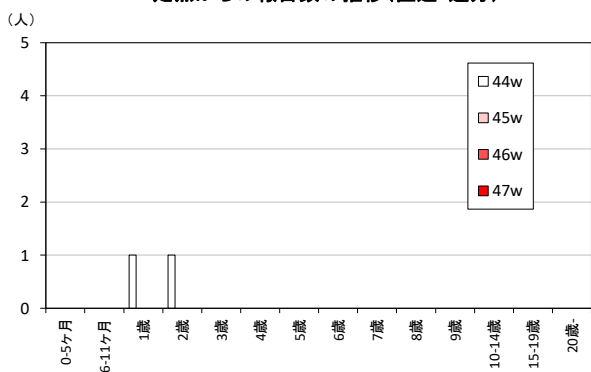
定点当たり報告数の比較



報告数の比較(2021年1w-52w)

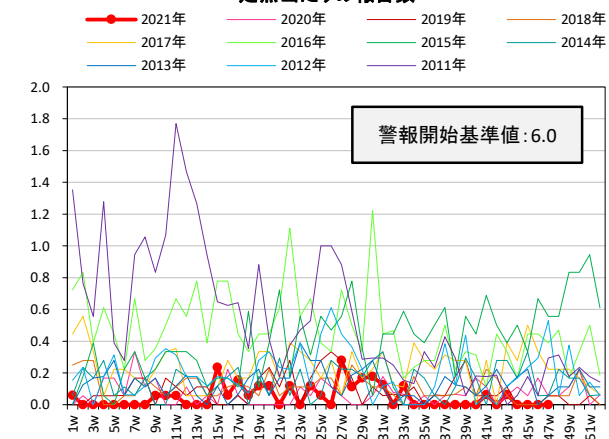


定点からの報告数の推移(直近4週分)

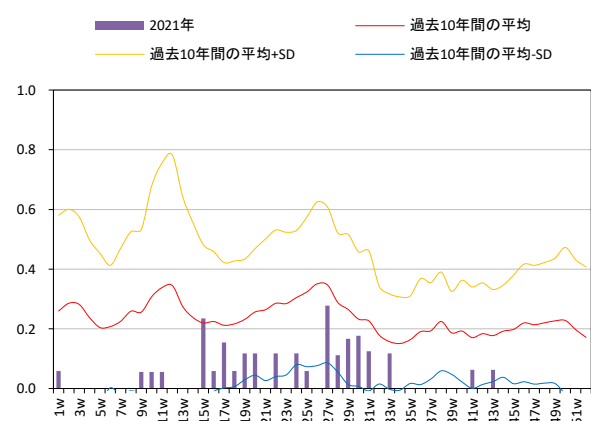


流行性耳下腺炎

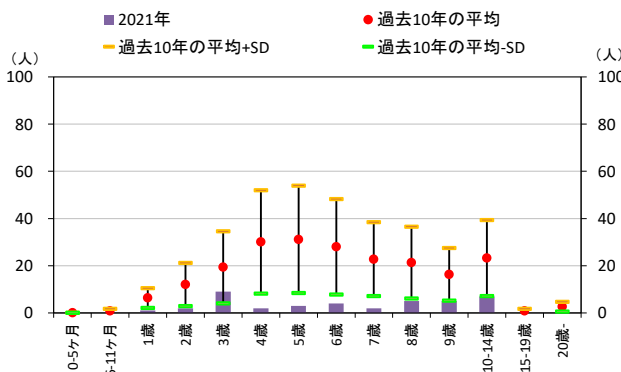
定点当たりの報告数



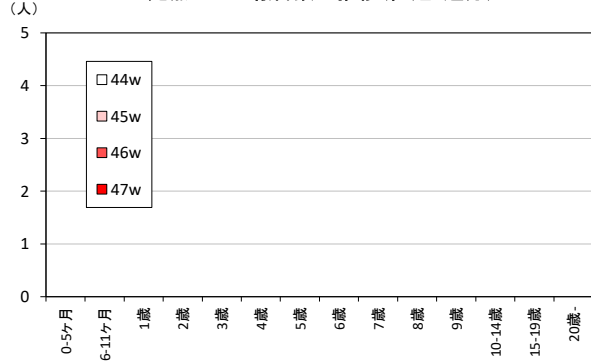
定点当たり報告数の比較



報告数の比較(2021年1w-52w)

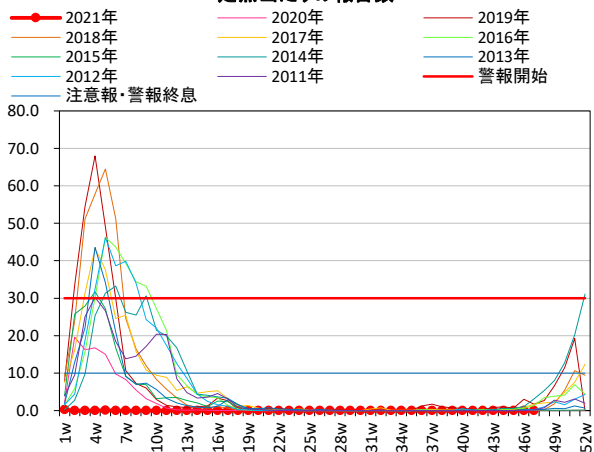


定点からの報告数の推移(直近4週分)

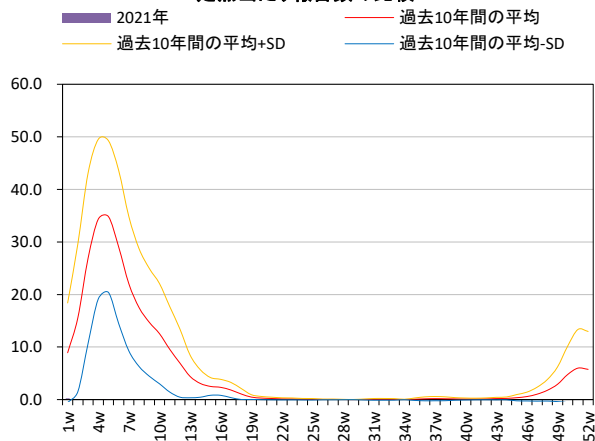


インフルエンザ

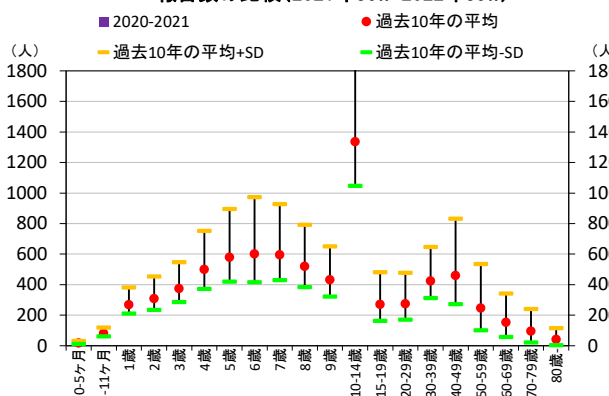
定点当たりの報告数



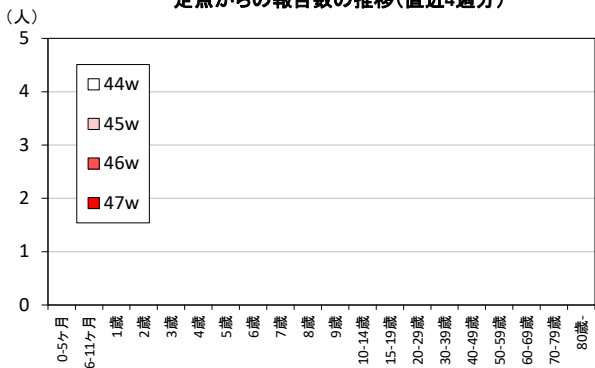
定点当たり報告数の比較



報告数の比較(2021年36w-2022年35w)

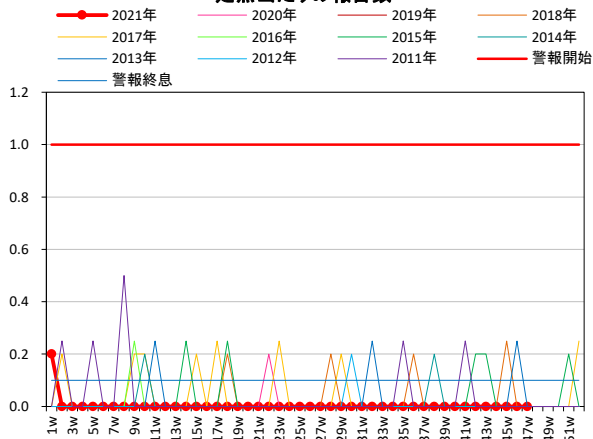


定点からの報告数の推移(直近4週分)

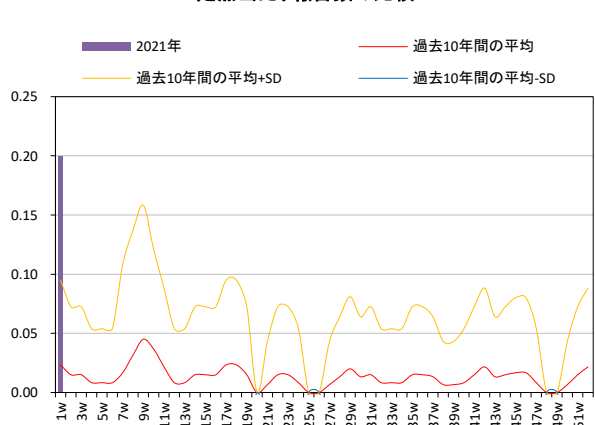


急性出血性結膜炎

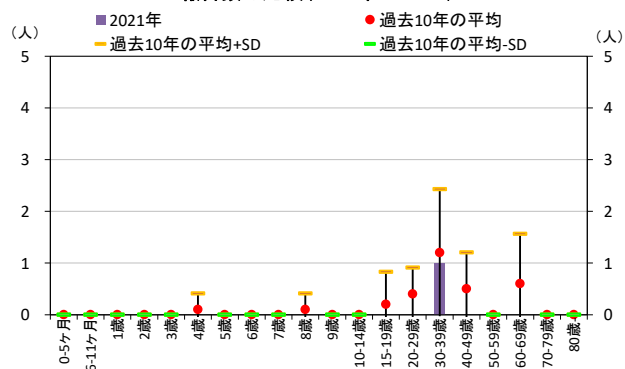
定点当たりの報告数



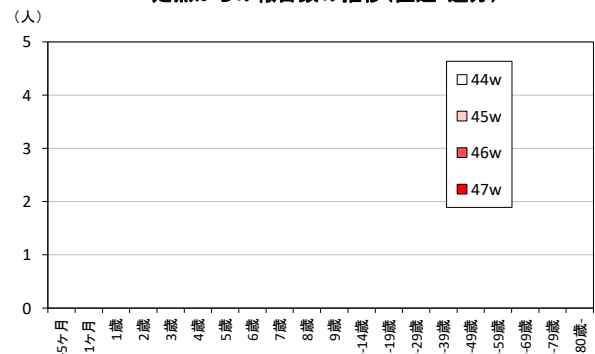
定点当たり報告数の比較



報告数の比較(2021年1w-52w)

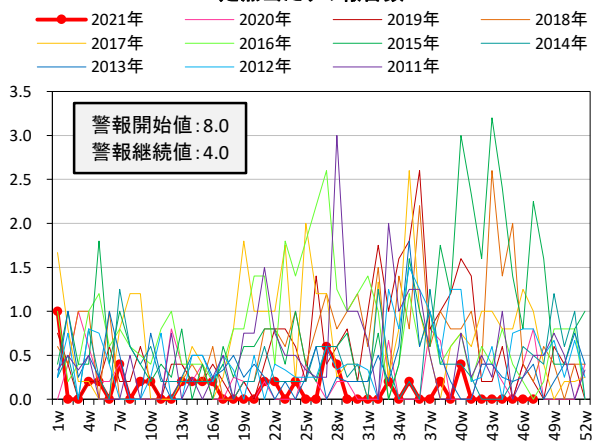


定点からの報告数の推移(直近4週分)

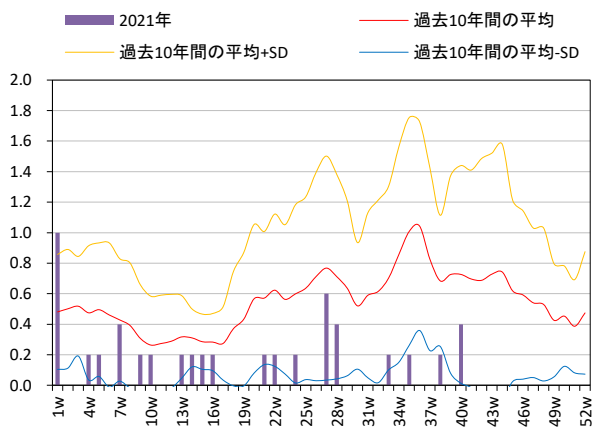


流行性角結膜炎

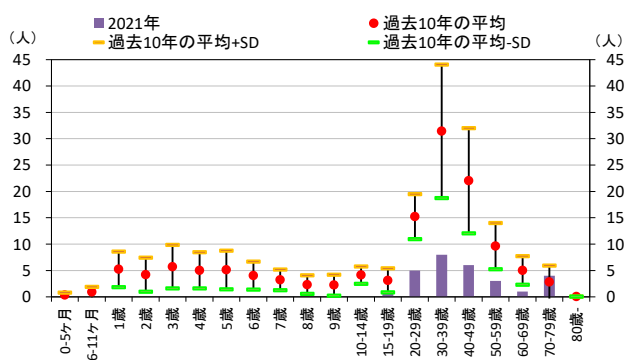
定点当たりの報告数



定点当たり報告数の比較



報告数の比較(2021年1w-52w)



定点からの報告数の推移(直近4週分)

