



**Guide to Disposing of Rubbish  
Using the Pneumatic Rubbish Disposal System**

**~Let's All Reduce Our Rubbish by 100g a Day!  
Let's Stop Global Warming!~**



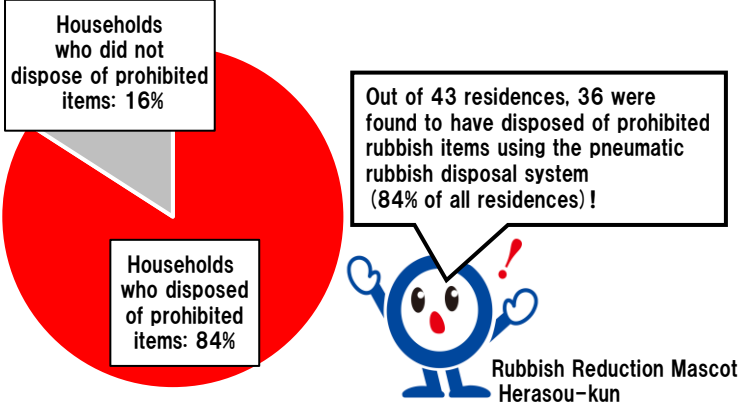
**Rubbish Reduction Mascot: Herasou-Kun**

# Investigation into the Incorrect Disposal of Non-Burnable Rubbish

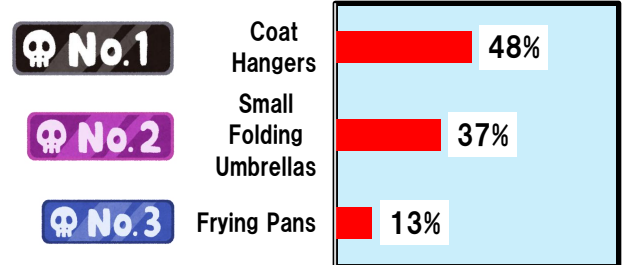
It was found that many apartment residents were disposing of prohibited rubbish items using the pneumatic rubbish disposal system (items which cannot be put into the chute).

※according to the results of the investigation into the incorrect disposal of non-burnable rubbish (June–November 2024)

## Results of the Investigation into the Incorrect Disposal of Non-Burnable Rubbish



## Main Items Which Were Disposed of Incorrectly



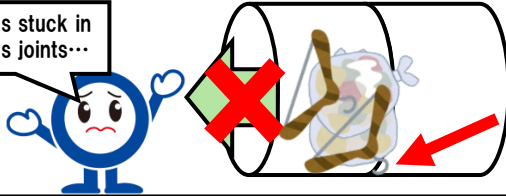
Amongst the prohibited items which were incorrectly disposed of, coat hangers accounted for the most, followed by small folding umbrellas and frying pans. Have a look at the below reasons as to why these items are not allowed to be disposed of using the pneumatic rubbish disposal system!

## ☠ No.1 Coat Hangers

### Reason Why This Item is Prohibited

The hooks on coat hangers can easily get caught in the joints of the disposal pipe, so coat hangers cannot be disposed of using this system.

The hook is stuck in the pipe's joints...

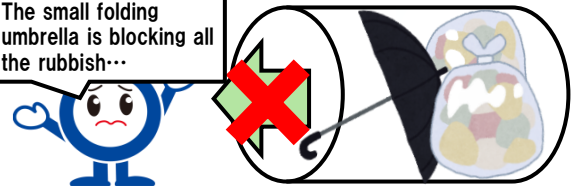


## ☠ No.2 Small Folding Umbrellas

### Reason Why This Item is Prohibited

When small folding umbrellas open in the pipe, they block other rubbish, so they are strictly prohibited from being disposed of using this

The small folding umbrella is blocking all the rubbish...

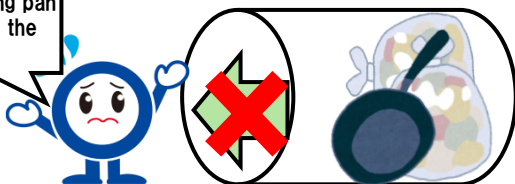


## ☠ No.3 Frying Pans

### Reason Why This Item is Prohibited

Items that are larger than 24cm x 24cm x 34 cm are not allowed to be disposed of using this system because they block the pipe.

The big frying pan has blocked the pipe...



Please call the Over-Sized Rubbish Collection Center when you want to dispose of any of these prohibited rubbish items. For more information, go to pages 7 and 8!



# Table of Contents

- Rubbish Collection Methods in Areas Using the  
Pneumatic Rubbish Disposal System.....p.3-4
- Prohibited Rubbish Items .....p.5-8
- Burnable Rubbish .....p.9-10
- Non-Burnable Rubbish .....p.11-12
- Over-Sized Rubbish .....p.13-14
- Hazardous Waste .....p.15-16
- Recyclables (Glass Bottles/Cans/PET Bottles) .....p.17
- Recyclables (Old Paper/Old Clothes) ..... p.18
- Recyclables (Tree Branches/Cut Grass/Leaves) .....p.19-20
- Others (items which cannot be brought to disposal facilities  
or disposed of at home) .....p.21-22
- Disposing of Once-Off Large Amounts of Rubbish .....p.23
- List of Incineration Plants .....p.24

Please check the page of the  
items you wish to dispose of.



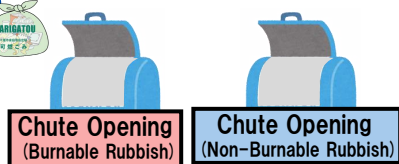
# Rubbish Collection Methods in Areas Using the Pneumatic Rubbish Disposal System

## What is the “Pneumatic Rubbish Disposal System” ?

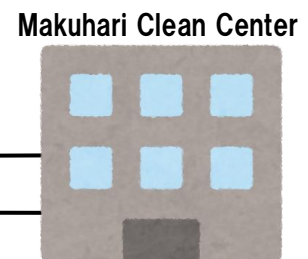
The pneumatic rubbish disposal system is a special pipe that uses the power of air to transport and collect rubbish.

## Rubbish Collection Using the Pneumatic Rubbish Disposal System

① The resident put the rubbish into the rubbish disposal chute



② Makuhari Clean Center operates the rubbish discharge valve remotely → The rubbish falls through the chute down into the pneumatic pipe



Air Intake Valve

Rubbish Discharge Valve

The diameter of the disposal pipe is 50cm

⑤ The rubbish is then collected and loaded onto a rubbish truck before being transported to a rubbish treatment facility

③ Makuhari Clean Center operates the air intake valve remotely

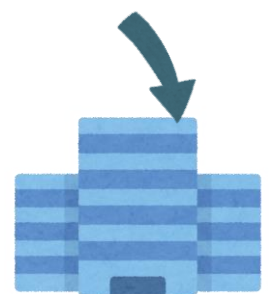
④ The air inside the disposal pipe is sucked towards Makuhari Clean Center, thus carrying the rubbish along with it



Burnable Rubbish      Non-Burnable Rubbish



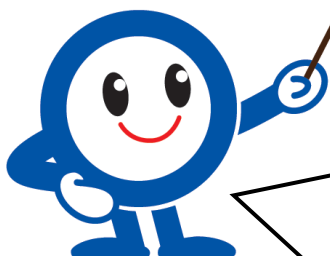
Incineration Plant



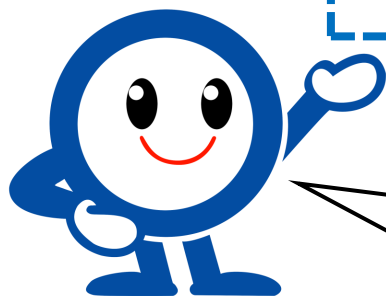
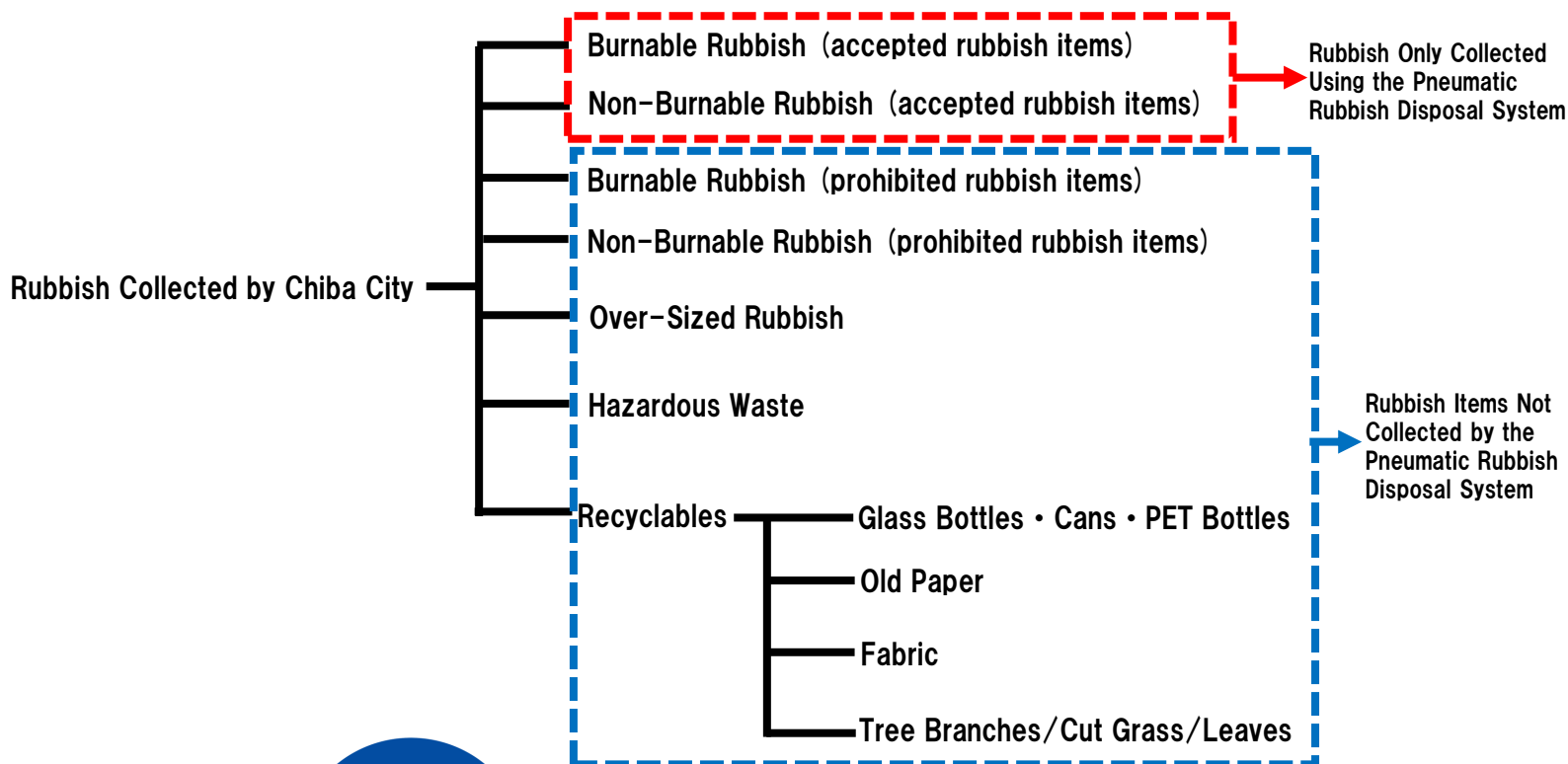
Niihama Recycling Center

### 4 Important Points!

- The diameter of the disposal pipe is only 50cm
- The rubbish is transported only by using air
- Both burnable and non-burnable rubbish are disposed of using the same pipe
- The designated rubbish bags may tear while being transported through the pipe



# Separating and Disposing of Rubbish



Not all rubbish can be collected using the pneumatic rubbish disposal system. Ensure that you are careful not to dispose of prohibited burnable and non-burnable rubbish using the system!

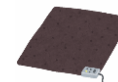
## Prohibited Rubbish Items (items which cannot be put into the chute)

The pneumatic rubbish disposal system cannot collect rubbish if the pipe is blocked. Please adhere to the below rules when disposing of rubbish to prevent the pipe from becoming blocked.

- ① Do not put rubbish into the chute that **exceeds 24cm x 24cm x 34cm in size**
- ② **Do not exceed the weight limit** per rubbish bag
- ③ Do not dispose of rubbish items that will **easily get caught** in the pipe or if the rubbish can become **easily tangled** with other rubbish

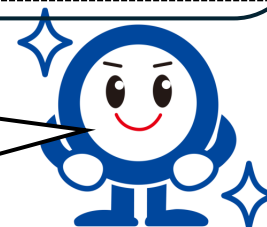
If too much rubbish is put into the designated rubbish bag and it exceeds the weight limit, the bag could become damaged while being transported through the pipe, resulting in the pipe becoming blocked.

⇒ **Some rubbish items may change size and unfold**, so please ensure that the rubbish items will still fit into the rubbish bag in case it unfolds while being transported through the pipe.



(example) Carpets etc

It is important that everyone follows the rubbish disposal rules so that the rubbish disposal system can be used by everyone.



# Prohibited Rubbish Items

Separate and  
Appropriate  
Disposal Process

Applications for  
Rubbish Collection

Over-Sized Rubbish Collection Center ☎043-302-5374

Opening Hours: Weekdays 09:00-16:00/Saturdays 09:00-11:30  
/Not available on public holidays or for the New Year's holidays

Consultation  
and Confirmation

Makuhari Clean Center ☎043-276-9681

Opening Hours: 08:00-16:00 (excluding the 31st of December to the 3rd of January)

## What Are Prohibited Rubbish Items?

Prohibited rubbish items consist of both burnable and non-burnable rubbish items which can cause blockages in the disposal pipes of the pneumatic rubbish disposal system. Example of prohibited rubbish items include the following:

- ① Items that exceed 24cm x 24cm x 34cm in size
- ② Items that exceed the weight limit of the designated rubbish bag
- ③ Items that can easily get caught in the pipe or tangled with other rubbish

## Examples of Prohibited Rubbish Items

<p><b>Items that exceed 24cm x 24cm x 34cm in size</b></p> <p>(judge the size and amount of rubbish that can fit into a bag as some items may unfold or change size while in the pipe)</p>	 <p>Pots      Frying Pans ★      Carpets</p> <p>Chopping Boards ★      Bags      Computer Keyboards      Air Mattresses</p>	
<p><b>Items that exceed the weight limit of the designated rubbish bag</b></p> <p>(Divide the rubbish into separate bags so that the weight doesn't exceed the maximum weight limit per bag.)</p>	 <p>Bags that exceed the maximum weight limit due to too many items being put in the bag ★</p> <p>Rice Cookers      Toaster Ovens</p>	
<p><b>Items that can easily get caught in the pipe or tangled with other rubbish</b></p> <p>(Items that can easily tangled with other rubbish is anything that is 24cm or longer in length. However, if it is cut to a length of 24 cm or less, it can be disposed of as burnable or non-burnable waste.)</p>	<p><b>Items that get easily caught in the pipe</b></p>  <p>Coat Hangers (Any size) ★      Small Folding Umbrellas ★      Tyre Chains (rubber, urethane)</p> <p><b>Items that are easily tangled with other rubbish (Items with a length of 24 cm or more)</b></p>  <p>Hoses (can't be cut)      Wires (can't be cut)</p>	

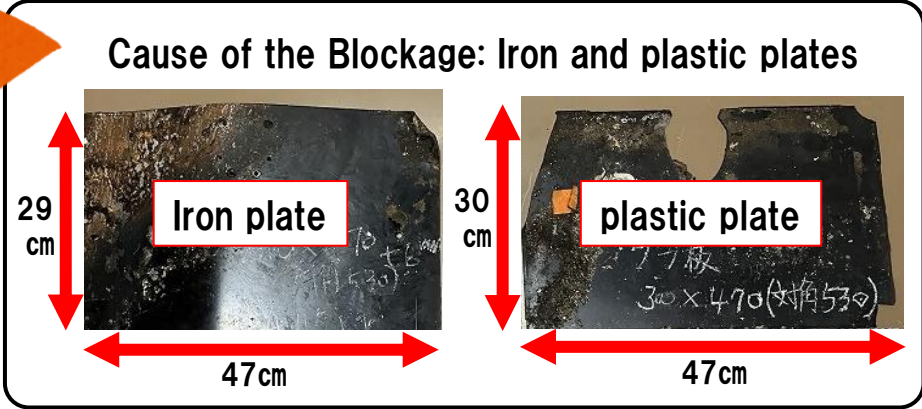
★: Items that are often disposed of incorrectly

# What Happens When Prohibited Rubbish Items Are Put into the Disposal Chute?

When prohibited rubbish items are put into the disposal chute, the whole system will **stop working and rubbish can't be disposed of!**  
In December of 2022 and 2023, the disposal pipe became blocked two years in a row and rubbish could not be collected from the whole apartment complex.



Blockage from December 2023



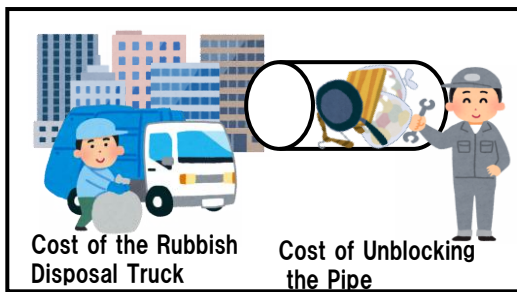
Items that exceed **24cm x 24cm x 34cm** in size



The prohibited rubbish items that were incorrectly disposed of were the reasons for the blockages. **Do NOT dispose** of these items in the disposal chute!

# What Happens When the Disposal Pipe is Blocked by Prohibited Rubbish Items?

If it is discovered that the cause of the pipe blockage is due to someone disposing of prohibited rubbish items, the **person responsible** will have to pay for the **rubbish disposal truck to come and collect the rubbish from all other apartments in the complex**, as well as the cost of **unblocking the pipe!**



**Everything must be paid by the person responsible**

Go to the next page to learn about how to dispose of prohibited items properly

# How to Dispose of Prohibited Rubbish items

## Procedures

### ①Apply for collection at the Over-Sized Rubbish Collection Center

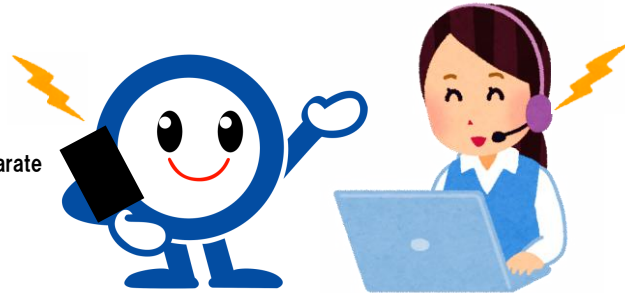
Call the Over-Sized Rubbish Collection Center to apply for rubbish collection

Tel: 043-302-5374

Collection Cost: **Free**

※call fees and the cost of the designated rubbish bag are separate

Languages Available  
Japanese, English, Vietnamese  
Chinese, Korean, Tagalog



Operator at the Over-Sized Rubbish Collection Center

### ②Put the rubbish items into a designated rubbish bag

Put all rubbish items which were applied for collection into a designated rubbish bag

#### Be Careful!

Put umbrellas into a 10l or 20l designated non-burnable rubbish bag.  
It is fine to put several umbrellas into the same bag as other non-burnable rubbish.  
Only umbrellas can be disposed of even if they are sticking out of the bag.



#### Be Careful!

For the below items, stick a 20l designated rubbish bag (or else 2 x 10l bags) onto the item with tape before putting it out for disposal.

- 1.8l rice cookers
- Square washing hangers
- 20l or less plastic storage tanks
- Wash basins
- Plastic chairs for the bathroom
- 18l cans

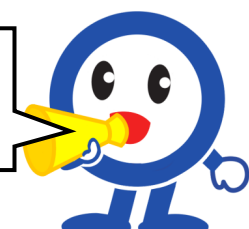


### ③Putting the items out for disposal

Put the items out for disposal at the designated rubbish disposal spot by 8 a.m. on the collection day.



Ensure that you check if the item you are throwing away is over-sized rubbish or a prohibited rubbish item!



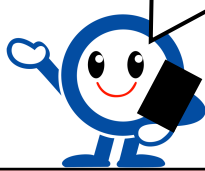
# How to Apply for Collection by the Over-Sized Rubbish Collection Center

## ① Call the Over-Sized Rubbish Collection Center

Hello, this is the Chiba City Over-Sized Rubbish Collection Center. Would you like to apply for the collection of over-sized rubbish?



I am living in the Utase district in Mihama Ward. The item I want to dispose does actually fit into a designated rubbish bag, but I cannot dispose of it using the chute in my building as it is a prohibited rubbish item.

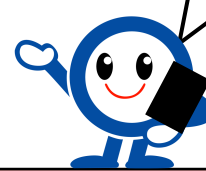


## ② Tell the operator what you want to dispose of

No problem. I see that it is an item that is not allowed to be disposed of using the disposal chute. Would you please be able to tell me what the item is?



It is a coat hanger.



## ③ Tell the operator about the item

Is it a wooden coat hanger? Is it made of plastic or metal?



It's a wire coat hanger.



## ④ Telling the operator how many items (rubbish bags) you want to dispose of

The wire coat hanger is non-burnable rubbish. Please put the coat hanger into a non-burnable designated rubbish disposable bag and tie the handles. How many bags would you like to dispose of?



Two bags.



## ⑤ Tell the operator your address, contact number and name

Understood. Could you please tell me your address, contact and number for collection?



I live in Utase XX-chome. My number is XXX-XXX-XX and my name is Herasou.



## ⑥ Write down the details of the collection day and collection number

The collection date is XX/XX (XXday) and your collection number is XXXX. Please write down the date and number on a sheet and stick it onto the rubbish bag where it can be easily seen. Put the rubbish out for disposal on the collection date at the designated over-sized rubbish disposal spot in your area.



Ok, I understand.



## ⑦ Listen to the operator's instructions

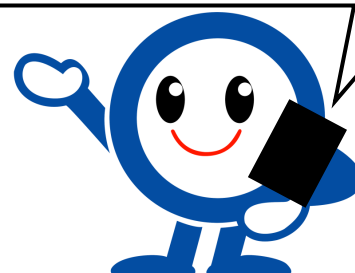
Please do not put hazardous waste such as spray cans or power banks into the non-burnable rubbish bags.



I understand.



**Double check what and how many bags you want to dispose of before calling!**



# Burnable Rubbish

daily\*

\*Rubbish is also collected on holidays

Enquiries

Makuhari Clean Center

☎043-276-9681

Opening Hours: 08:00-16:00 (excluding the 31st of December to the 3rd of January)

## How to Dispose of Burnable Rubbish

### ① Buy a designated rubbish bag

They are sold at supermarkets and convenience stores.

※Use 5l, 10l or 20l rubbish bags for the rubbish items (30L and 40L bags cannot be used)

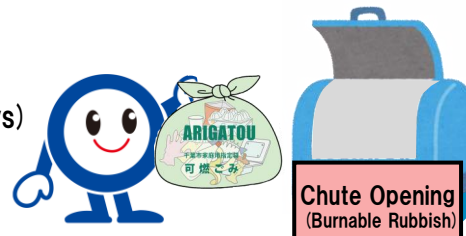


### ② Put the rubbish into the rubbish bag and tie it so that nothing can spill out



### ③ Put the rubbish into the disposal chute

Disposal Days Daily (excluding New Year's holidays)  
Disposal Times 06:00-19:00



Chute Opening (Burnable Rubbish)



Designated Burnable Rubbish Bag

Designated Rubbish Bag Sizes	5l	10l	20l
Cost (set of 10)	40 yen	80 yen	160 yen
Cost Per Bag	4 yen	8 yen	16 yen

## Points to Be Aware of When Disposing of Burnable Rubbish

### ① Check the information included about burnable rubbish items in the “Chiba City Guidebook to Disposing of and Reducing Rubbish” on pages 7 and 8 (supplementary guidebook)

※Ensure that you check that you are not disposing of any prohibited rubbish items (p.5)

The latest version of the guidebook can be found here



### ② Do not exceed the maximum weight limit per bag

Size	Maximum Weight Limit
5l	750g or less
10l	1.5kg or less
20l	3 kg or less



Ensure that you check the **maximum weight** of the bags before buying!

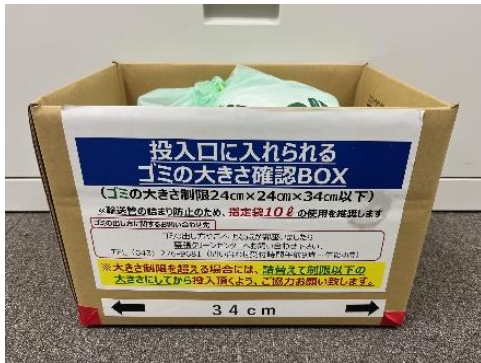
③ The maximum size of each bag must not exceed **24cm x 24cm x 34cm**

※ Rubbish that has been folded but exceeds the size limit when unfolded.

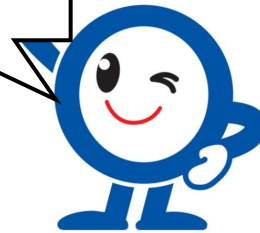
The rubbish must adhere to the the 24cm x 24cm x 34cm size limit

(eg. tents, bags, blankets and air mattresses etc.)

※ Before disposing of rubbish in the disposal chute, ensure that you check the size of the bag to see if it fits in the chute by putting the bag into the “Size-Checker Box”






It is important to be careful about the **size** of the rubbish bags!



**Herasou-kun's Key Tips**



The Size Can Change	Items That Get Easily Tangled with Other Rubbish	Too Many Rubbish Items
<p>Be careful of the following : The size of the rubbish disposed of may change after it has been thrown away as it may unfold and expand in size. Ensure that the rubbish does not exceed <b>24cm x 24cm x 34cm</b> in size. If the rubbish exceeds this size, do not dispose of it in the disposal chute. ※</p>	<p>Be careful of the following : If the rubbish can become easily tangled with other rubbish items, cut the items into lengths of 24cm and then put the cut items into a designated rubbish bag before disposing of them in the disposal chute. If the rubbish cannot be cut, do not dispose of it using the disposal chute※</p>	<p>Be careful of the following : Fill the designated rubbish bag with rubbish and ensure that it does not exceed the size limit of <b>24cm x 24cm x 34 cm</b>. ※</p>
<p>(Example)</p>  <p>Bags      Air Mattresses      Carpets</p> <p>Etc.</p>	<p>(Example)</p>  <p>Hoses      Tyre Chains (rubber or urethane)</p> <p><small>Metal chains are classed as hazardous waste (refer to p.15 for information on how to dispose of metal chains)</small></p> <p>Etc.</p>	<p>(Example)</p>  <p>Etc.</p>

※ It is strictly prohibited to dispose of rubbish in the disposal chute that exceeds the size and weight limits, is shaped in a way that can easily block the disposal pipe or get tangled with other rubbish items. Please refer to p.7 for information on how to dispose of prohibited items.

**Separating Different Types of Plastics**

**Burnable Rubbish**

Soft Plastics  
(items which cannot be bent or broken by hand)



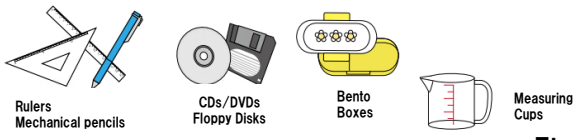
Detergent Bottles      Shampoo Bottles      Cooking Oil Bottles      Seasoning Bottles      Etc.



Don't mix them up!

**Non-Burnable Rubbish**

Hard Plastics  
(items which can be broken or bent by hand)



Rulers Mechanical pencils      CDs/DVDs Floppy Disks      Bento Boxes      Measuring Cups      Etc.

# Non-Burnable Rubbish

Three times a week  
Mon/Wed/Fri

※Rubbish is also collected on holidays

Enquiries

Makuhari Clean Center

☎043-276-9681

Opening Hours: 08:00-16:00 (excluding the 31st of December to the 3rd of January)

## How to Dispose of Non-Burnable Rubbish

### ① Buy a designated rubbish bag

They are sold at supermarkets and convenience stores.



### ② Put the rubbish into a designated rubbish bag and tie the handles.



### ③ Put the rubbish into the disposal chute

Disposal Times 07:00-18:00



Chute Opening  
(Non-Burnable Rubbish)



Designated Non-Burnable Rubbish Bag

Designated Rubbish Bag Sizes	10l	20l
Cost (set of 10)	80 yen	160 yen
Cost Per Bag	8 yen	16 yen

## Points to Be Aware of When Disposing of Non-Burnable Rubbish

### ① Check the information included about non-burnable rubbish items in the “Chiba City Guidebook to Disposing of and Reducing Rubbish” on pages 25 and 26 (supplementary guidebook)

※Ensure that you check that you are not disposing of any prohibited rubbish items (p.5)

The latest version of the guidebook can be found here



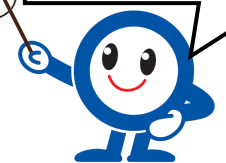
### ② Do not exceed the maximum weight limit per bag

※Do not put too many ceramic items together in one bag (plates and tiles may exceed the maximum weight limit even if the bag has not been completely filled)

Size	Maximum Weight Limit
10l	1.5kg or less
20l	3 kg or less

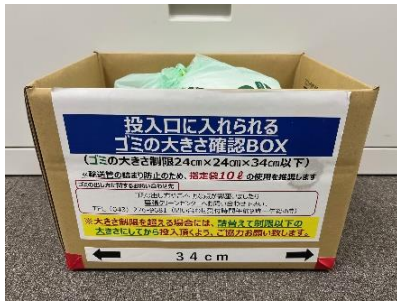


Ensure that you check the **maximum weight** of the bags before buying!

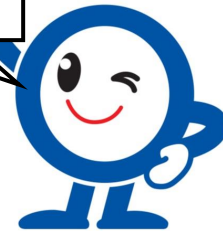


③The maximum size of each bag must not exceed **24cm x 24cm x 34cm**

※Before disposing of rubbish in the disposal chute, ensure that you check the size of the bag to see if it fits in the chute by putting the bag into the “Size-Checker Box”





It is important to be careful about the **size** of the rubbish bags!



## Herasou-kun's Key Tips



Items That Get Easily Tangled with Other Rubbish	It can weigh more than expected
<p><b>Be careful of the following :</b> If the rubbish can become easily tangled with other rubbish items, cut the items into lengths of 24cm and then put the cut items into a designated rubbish bag before disposing of them in the disposal chute. If the rubbish cannot be cut, do not dispose of it using the disposal chute*</p>	<p><b>Be careful of the following:</b> Do not dispose of too many ceramic items in one bag as it may exceed the maximum weight limit. <b>If you are disposing of more than two bags of ceramic items at once, please contact the Makuhari Clean Center in advance.</b></p>
<p>(Example)</p>  <p><b>Wires</b> Etc.</p>	<p>(Example)</p>  <p><b>Plates, Ceramic Items</b> Etc.</p>

※It is strictly prohibited to dispose of rubbish in the disposal chute that exceeds the size and weight limits, is shaped in a way that can easily block the disposal pipe or get tangled with other rubbish items. Please refer to p.7 for information on how to dispose of prohibited items.

## How to Dispose of Small Rechargeable Batteries

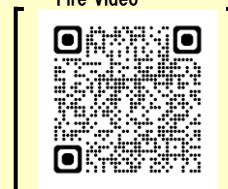
**Chiba City does not provide collection services for small rechargeable batteries.**

Check the information included about small rechargeable batteries in the “Chiba City Guidebook to Disposing of and Reducing Rubbish” on pages 17–22 (supplementary guidebook)

The latest version of the guidebook can be found here



Reenactment of a Fire Video



Small rechargeable batteries cannot be collected or transported by rubbish trucks because they may explode and cause a fire during collection or disposal.



Please check out this YouTube Video to see a reenactment of a fire caused by batteries.



# Over-Sized Rubbish

Separate and Appropriate Disposal Process

Enquiries

**Over-Sized Rubbish Collection Center**  
 Opening Hours: Weekdays 09:00-16:00/Saturdays 09:00-11:30  
 /Not available on public holidays or for the New Year's holidays

☎043-302-5374

## How to Dispose of Over-Sized Rubbish

**Be Careful!**

**Over-Sized Rubbish cannot be disposed of in the disposal chute!**



### ① Apply for collection at the Over-Sized Rubbish Collection Center

Applications can be made over the phone, online or on the LINE app.

#### Applying by Phone



#### Be careful of the following:

- The application process will be smoother if you can report the size and weight of the rubbish when applying
- Take note of the collection date, collection number and collection fee.

#### Applying Online or Using the LINE App



#### Be careful of the following:

- It may take between one to two weeks for the item to be collected from the time of application. If there is a high volume of applications, collection may take over two weeks.
- Some specified items cannot be applied for online or on the LINE app (beds, mattresses, AV equipment etc.). Please apply for the collection of these items by phone.
- The application will have been accepted when the applicant receives a confirmation email.

### ② After the applying, the applicant must buy a payment slip and attach it to the over-sized rubbish item.

#### Be careful of the following:

- Attach all required payments slips to each item of rubbish.



#### Collection Fee Payment Tickets for Over-Sized Rubbish

Cut the payment voucher from the receipt and attach it to the over-sized rubbish item.

#### Where to buy the collection fee payment slips for over-sized rubbish items:

- The Community Building Support Office at each ward office
  - Chiba Mirai Agricultural Cooperative
  - Each Civic Center ○ケーヨーデーツー (D2)
  - Off licences associated with the Liquor Association ○Tou's
  - Co-op Mirai Omaruetsu
  - Any convenience store ○Yac's Drugstore
- ※Please be aware that certain branches or stores may not sell the payment slips, so please contact the store in advance to confirm.

For Online Payments: Only for applications made online or using the LINE app

After completing the application online or using the LINE app, the applicant will be sent an email from the Over-Sized Rubbish Collection Center with the details of the collection date, collection number/name. Write this information on a page and stick it to the over-sized rubbish item with tape.

※Please attach these details to each piece of rubbish which is to be disposed of. Please note that if this information is not stuck to the over-sized rubbish items, they will not be collected.

### ③ Disposing of Over-Sized Rubbish

Put the items out for disposal at the designated over-sized rubbish disposal spot by 8 a.m. on the collection day.



# Collection Fee for Over-Sized Rubbish (main items)

## 390 yen Collection Fee

○Futons ○Lights/Lamps ○Printers  
○Tabletop gas cookers ○Stoves ○Toilet seats  
○Fans ○Hoovers ○Golf clubs  
Etc.



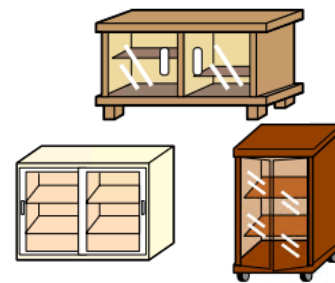
## 780 yen Collection Fee

○Desks (excluding desks with drawers on both sides)  
○Bicycles (over 15 inches tall)  
○Armchairs/Sofas (for 1 person) ○Microwave stands  
※Excluding coil or pocket spring sofas ○Stepladders (over 1.5m high)  
Etc.



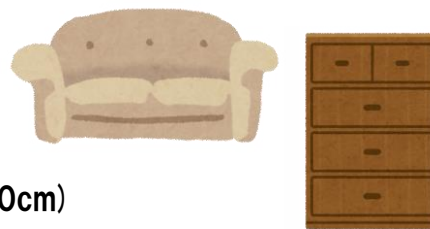
## 1,170 yen Collection Fee

○Sideboards  
○Cupboards (height or width over 90cm)  
○Single beds  
※Excluding coil or pocket spring sofas  
○Bookcases (height or width over 90cm)  
Etc.



## 1,560 yen Collection Fee

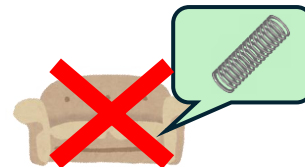
○Massage chairs  
○Armchairs/Sofas (for 2 people)  
※Excluding coil or pocket spring sofas  
○Dresser/Chest of drawers (height or width over 90cm)  
Etc.



For other over-sized items which you wish to dispose of, please check online or call the Over-Sized Rubbish Collection Center.

### Be Careful!

Sofas and mattresses which have coil or pocket springs **cannot be collected for disposal** by the Over-Sized Rubbish Collection Center. For information on how to dispose of these items, please refer to p.21.



## Over-Sized Rubbish Items Can Also Be Brought Directly to Disposal Facilities

### ① Bring the rubbish items to **Niihama Recycling Center**\*

※Burnable items such as futons, carpets, tatami mats and mattresses cannot be disposed of here

### ② Bring the rubbish items to **Kitayatsu Incineration Plant**\* or **Kita Incineration Plant**\*

※Only futons, carpets, tatami mats and mattresses (excluding those with coil or pocket springs) can be disposed of (up to 10 items per day)

○Opening Hours/Mon-Fri:13:00-16:00

※Rubbish cannot be brought to these facilities on the weekend, public holidays, New Year's holidays and when the facilities are closed for maintenance

※When dropping off rubbish at these facilities, you will be required to provide proof of identification.

○The disposal fee is 290 yen per 10kg

※Even if the total weight is less than 10 kg, it will still be classed as 10kg

※The disposal fee is 270 yen per 10 kg plus consumption tax rounded down to the nearest 10 yen (making it 290 yen)

※The disposal fee is to be paid directly at the facility (cash only)

### ③ Bring the rubbish items to your nearest **Environmental Center**\* (up to 10 items per day)

※Refer to p.24 for more information about these facilities

○Opening Hours/Weekdays: 09:00-16:00/Saturdays: 09:00-12:00

※Rubbish cannot be brought here on Sundays, public holidays and the end of year holidays

※When dropping off rubbish at these facilities, you will be required to provide proof of identification.

○Disposal Fee: Refer to the above "Over-Sized Rubbish Disposal Fees"

※Please pay the disposal fee in cash (Payment is also accepted by credit card or QR payments.

For more information about other acceptable payment methods, please refer to the website of the Environmental Centers (info on p.24).

# Hazardous Waste

Monthly※  
2nd and  
4th Tuesday

※Rubbish is also collected  
on holidays

## Enquiries

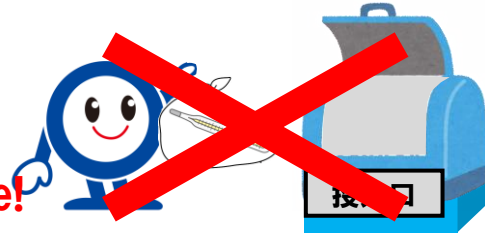
Chiba City's Household Waste Consultation Line  
Opening Hours: 08:30-17:30  
Excluding Sundays and the end of year holidays (Dec 31st-Jan 3rd)

☎043-204-5380

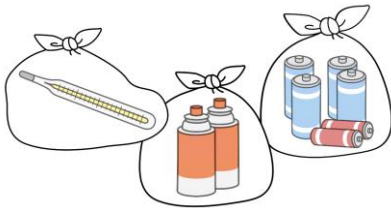
## How to Dispose of Hazardous Waste

### Be Careful!

Over-Sized Rubbish cannot  
be disposed of in the disposal chute!



- ① Put the hazardous waste items into a clear rubbish bag.



Designated or old designated rubbish bags cannot be used.

- ② Put the rubbish out for disposal at the designated disposal spot.

Collection Days:  
2nd and 4th Tuesday of every month






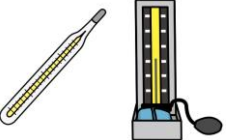



### Be Careful!

Do not put fluorescent bulbs  
or lights into the rubbish bag!

Put the bulbs back into the case they were bought in or else wrap them in newspaper before putting them out for disposal.



## Types of Hazardous Waste

<p><b>Fluorescent Bulbs/LED Bulbs</b></p>  <p>If they are broken, they are to be disposed of as non-burnable rubbish</p>	<p><b>Dy Cell Batteries/Lithium Coin Cell Batteries (CR or BR types)</b></p> 	<p><b>Car Tyre Chains (made of metal)</b></p>  <p>Rubber and urethane chains are to be disposed of as burnable rubbish (refer to p.10 for information on how to dispose of these chains)</p>
<p><b>Thermometers/Blood Pressure Monitors (containing mercury)</b></p>  <p>Those that do not use mercury can be disposed of as non-burnable rubbish</p>	<p><b>Disposable Lighters</b></p> 	<p><b>Cassette Gas Cylinders Spray Cans</b></p> <p>The caps can be disposed of as burnable rubbish</p> 
<p><b>Magnets (hard magnets)</b></p>  <p>Soft magnets can be disposed of as burnable rubbish</p>	<p>Check the information included about hazardous waste in the “Chiba City Guidebook to Disposing of and Reducing Rubbish” on pages 27-28 (supplementary guidebook)</p>	

The latest version of the guidebook can be found here



## Ensure You Check the Following Before Disposing of Hazardous Waste

Ensure that the contents of the disposable lighters and spray cans have been completely used before putting them out for disposal.



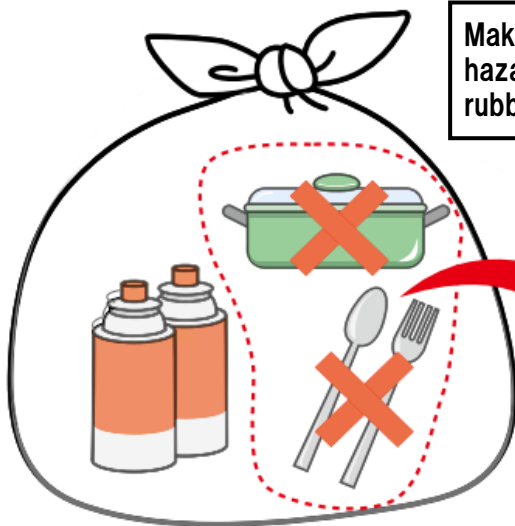
**There is no need to puncture the can.**

To ensure that the contents of the can have been completely used up, spray the can in a well-ventilated area away from fire. Explosions have occurred due to flammable gases accumulating and igniting.

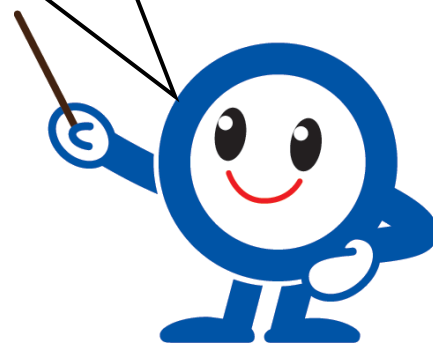
Make sure to use up all the content of the can in a well-ventilated place away from fire before disposing of the can!



Do not put any other non-hazardous waste items into the same rubbish bag as hazardous waste.



Make sure that you don't dispose of hazardous waste and non-burnable rubbish together!



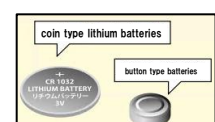
## Items Which Are Easily Mistaken for Hazardous Waste

① Inside some spray cans, there may be **flammable gases** which are considered hazardous waste (insecticides, cassette gas cylinders etc.). Anything else apart from the cans can be disposed of as burnable or non-burnable rubbish.

② Incandescent light bulbs and LED bulbs are non-burnable rubbish. Wrap broken bulbs in newspaper and write "**waremono**" (broken) or "**kiken**" (sharp) on the newspaper, before putting them into a **designated non-burnable rubbish bag**.



③ Although coin type lithium batteries are collected by the city as hazardous waste, button type batteries are not collected by the city.※ The difference between the batteries is that coin type lithium batteries have **CR** or **BR** inscribed on them.



※For more information on how to dispose of button type batteries, please refer to p.21.

# Recyclables

(Glass Bottles/Cans/PET Bottles)

Weekly\*  
Once a week

\*Rubbish is also collected on holidays

Enquiries

Chiba City's Household Waste Consultation Line  
Opening Hours: 08:30-17:30  
Excluding Sundays and the end of year holidays (Dec 31st-Jan 3rd)

☎043-204-5380

Collection Days:  
Utase 1-ch ō me: Wednesdays  
Utsae 2 and 3-ch ō me: Thursdays

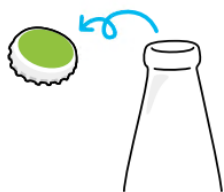
## How to Recycle Glass Bottles, Cans and Plastic Bottles

Be Careful!

Over-Sized Rubbish cannot be disposed of in the disposal chute!



### Glass Bottles



① Remove the caps

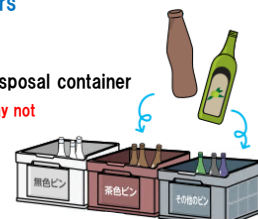


② Wash the bottles out

The bottles are separated according to the colours of the containers

- ① Remove the caps
- ② Wash the bottles out
- ③ Put them in the designated disposal container

\*Due to space constraints, there may not always be three disposable containers available. In that case, dispose of all the bottles into the container provided without separating them by colour.



③ Put them in the designated disposal container

### Cans (drinking cans)



① Wash the cans out

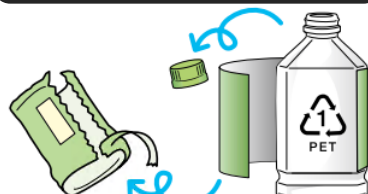


② Squash all aluminium cans



③ Put them in the designated disposal container

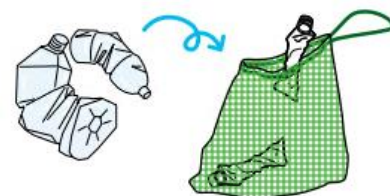
### PET Bottles



① Remove the caps and labels



② Wash the bottles out and squash them as much as possible



③ Put them in the designated disposal container

For more details, check the information included in the "Chiba City Guidebook to Disposing of and Reducing Rubbish" on pages 9-10 (supplementary guidebook)

The latest version of the guidebook can be found here



# Recyclables

## (Old Paper/Old Clothes)

Weekly※  
Fridays

※Rubbish is also collected on holidays

### Enquiries

Enquiry Center for Recycling Old Paper and Old Clothes  
Opening Hours: Weekdays 09:00-17:00  
※Not open on weekends and public holidays

☎043-223-7767

## How to Recycle Old Paper and Old Clothes

### Be Careful!

Over-Sized Rubbish cannot be disposed of in the disposal chute!



### Old Paper



① Remove any items inside the old paper



② Collect the old paper in piles and tie them with string in a cross shape

※Old paper can also be recycled in rainy weather



③ Put the old paper out for recycling at the designated rubbish disposal spot

### Old Clothes



① Wash the clothes and make sure that they are clean before putting them out for recycling



② Put the old clothes into a clear bag or former designated rubbish bag

※Old clothes cannot be put out for recycling if it is raining or forecasted to rain



③ Put the old clothes out for recycling at the designated rubbish disposal spot

### Be Careful!

- Some types of old paper cannot be recycled and are to be disposed of as **burnable rubbish**※ (Eg. old paper that is oily or dirty, or if it was used as filling for bags and shoes)
- The below old clothes cannot be recycled and are to be disposed of as **burnable rubbish**※ (Eg. Items which contain cotton or feathers, or if the clothes are worn and old)

※Check the size of the items being disposed of in advance to check if they fit into the disposal chute or not.

# Recyclables

(Tree Branches/Cut Grass/Leaves)

Separate and Appropriate Disposal Process

## Enquiries

Chiba City's Household Waste Consultation Line  
 Opening Hours: 08:30-17:30  
 Excluding Sundays and the end of year holidays (Dec 31st-Jan 3rd)

☎043-204-5380

## Applying for Collection (3 bundles or less)

### Over-Sized Rubbish Collection Center

Opening Hours: Weekdays 09:00-16:00/Saturdays 09:00-11:30  
 /Not available on public holidays or for the New Year's holidays

☎043-302-5374

## Applying for Collection (4 bundles or more)

### Chuo and Mihama Environmental Center

Opening Hours: Weekdays 09:00-17:00/ Sat: 09:00-12:00  
 No collections on Sundays, public holidays and during the end of year holidays.

☎043-231-6342

## Situations Where Tree Branches, Cut Grass and Leaves Are Collected and Disposed of by the City

### Situation 1: When moving



Eg: Household plants and bonsai  
 ※Ensure that the plants are all disposed of separately

### Situation 2: When residents take themselves take action for the purpose of keeping their area clean



Eg: The residents of an apartment block clean and sweep the leaves around their building

### Prohibited Actions:



#### Be Careful!

Tree branches and grass which were cut by contractors cannot be disposed of in this way.



#### Be Careful!

Wooden products, waste timber, bamboo roots, plant roots, vegetables and fruit cannot be disposed of in this way.

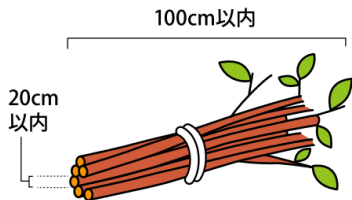
# How to Dispose of Tree Branches, Cut Grass and Leaves

**Be Careful!**

**Over-Sized Rubbish cannot be disposed of in the disposal chute!**



## Tree Branches



- ① Cut the branches so that they have a diameter of 20cm or less and a length of 100cm or less
- ② Tie the branches together in a bundle with string (do not tie them in bundles that are too heavy for one person to lift)

## Cut Grass



**Cut Grass and Leaves**  
Put the cut grass into a clear rubbish bag or former designated rubbish bag (45l bag or less)  
※Separate the cut grass out to ensure that there is no soil attached to the roots

## When Disposing of 3 Bags or Less

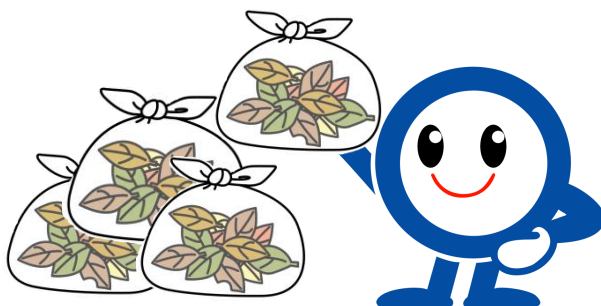


Call and apply at the Over-Sized Rubbish Collection Center  
(☎043-302-5374)

## When Disposing of 4 Bags or More



Call and apply at the Chuo and Mihama Environmental Center  
(☎043-231-6342)



Put the items out for disposal at the designated rubbish collection spot on the collection day specified by the Over-Sized Rubbish Collection Center or the Chuo and Mihama Environmental Center

For more information about disposing of these items, check the “Chiba City Guidebook to Disposing of and Reducing Rubbish” on pages 15 and 16 (supplementary guidebook)

The latest version of the guidebook can be found here



# Others




(items which cannot be brought to disposal facilities or disposed of at home)

No  
Collection

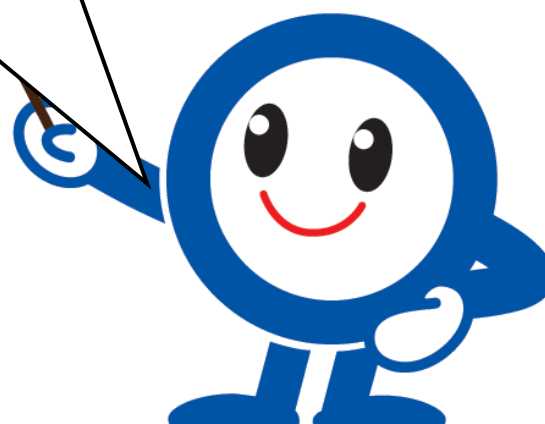
## Items which cannot be brought to disposal facilities or disposed of at home

Chiba City does not collect and dispose of prohibited rubbish items. Please check the below table and see where you can consult about the disposal of prohibited rubbish items.

Prohibited Rubbish Item	Where to Consult
Gasoline/Oil/Kerosene 	Nearest gas station
Surfboards (over 1.5m long) Fireproof Safes Bathtubs Coil or button spring items (such as sofas or mattresses) Pianos Keyboards (those over 1.5m long or with a side frame and pedal attached) Bowling balls Etc.	Store of purchase, the manufacturer or an operator approved by Chiba City  Kondo Syokai Ltd. ☎043-257-5279 <a href="http://www.kondo-syokai.co.jp/">http://www.kondo-syokai.co.jp/</a>  ※Contact in advance when bringing items directly
Small Rechargeable Batteries Power Banks 	Affiliated store with a special collection box or the Japan Portable Rechargeable Battery Recycling Center ☎03-6403-5673 <a href="http://www.jbrc.com/">http://www.jbrc.com/</a> Alternatively, bring it to one of the Environmental Centers or Niihama Recycling Center
Button Cell Batteries 	Affiliated store with a special collection box or the Button Cell Collection Promotion Center  ☎0120-266-205 <a href="http://www.botankaishu.jp/m/top.php">http://www.botankaishu.jp/m/top.php</a>
Fire Extinguishers 	Store of purchase or the Fire Extinguisher Recycling Promotion Center  ☎03-5829-6773 <a href="http://www.ferpc.jp/">http://www.ferpc.jp/</a> ----- Chiba Prefecture Firefighting Equipment Cooperative ☎043-306-9321
Gas Cylinders (excluding cassette gas cylinders) 	Store of purchase or the Chiba Prefecture Liquefied Petroleum Gas Association  ☎043-246-1725
Car Batteries 	Store of purchase, car dealerships, gas stations or car stores  <a href="http://www.chiba-log.or.jp/">http://www.chiba-log.or.jp/</a>

Prohibited Rubbish Item	Where to Consult
<p><b>Tyres</b> (parts are sent to dismantling operators)</p> 	<p>Store of purchase, car dealerships, gas stations or car stores or an operator approved by Chiba City</p> <p>Kondo Syokai Ltd. ☎043-257-5279 <a href="http://www.kondo-syokai.co.jp/">http://www.kondo-syokai.co.jp/</a></p> <p>※Contact in advance when bringing items directly</p>
<p><b>Motorcycles</b> (parts are sent to dismantling operators)</p> 	<p>Motorcycle Recycling Call Center ☎050-3000-0727 <a href="http://www.jarc.or.jp/motorcycle/">http://www.jarc.or.jp/motorcycle/</a></p>
<p><b>Car Parts</b></p> 	<p>Dismantling operator</p>
<p><b>Hazardous Chemicals and Containers</b> Insecticides Agrochemicals Smoke Bombs Hazardous Materials Pickling Stones Plasterboard Paint and Paint Cans</p> <p style="text-align: right;">Etc.</p>	<p>Please consult at the store of purchase or with the manufacturer</p>
<p><b>Concrete Blocks</b> (limited to blocks thrown away from houses)</p>	<p>Chiba City Waste Recycling Business Cooperative ☎043-204-5805</p> <p>※Some materials cannot be accepted, so please ask the cooperative for more details in advance</p>
<p><b>Soil, Sand and Stone</b></p>	<p>Store or purchase or a specialized company such as a gardening store</p>

Chiba City does not collect and dispose of the above-mentioned items, so please consult with the various organizations listed on how to dispose of these items!



## Disposing of Once-Off Large Amounts of Rubbish (for a fee)

When disposing of once-off large amounts of rubbish (for example, when moving or disposing of the belongings of someone who passed away), **make sure that you contact the Makuhari Clean Center in advance** on 043-276-9681.

If large amounts of rubbish are disposed of at once in the disposal chute, it may lead to the chute becoming blocked. In addition to disposing of the rubbish in the disposal chute, the rubbish can also be brought directly to an incineration facility.

### Bring the Rubbish to an Incineration Plant

The disposal fee is 290 yen per 10kg

Opening Hours: Weekdays: 13:00-16:00

※Even if the total weight is less than 10 kg, it will still be classed as 10kg

※The disposal fee is 270 yen per 10 kg plus consumption tax rounded down to the nearest 10 yen (making it 290 yen)

○It is not required to put the rubbish into a designated rubbish bag.

○Rubbish cannot be brought to these facilities on weekends, public holidays, New Year's holidays and when the facilities are closed for maintenance

○When dropping off rubbish at these facilities, you will be required to provide proof of identification.

Over-Sized Rubbish, Non-Burnable Rubbish, Hazardous Waste, Glass Bottles, Cans and PET Bottles

Niihama Recycling Center (4 Niihama-cho, Chuo Ward) ☎043-263-9100

※Futons, carpets, tatami mats and mattresses are prohibited

Bring **over-sized rubbish** to the nearest Environmental Center (up to 10 items per day).

Chuo and Mihama Environmental Center  
(8-1-17 Miyako-cho, Chuo Ward) ☎043-231-6342

Hanamigawa and Inage Environmental Center  
(2147-7 Miyanogi-cho, Inage Ward) ☎043-259-1145

Burnable Rubbish, Futons, Carpets, Tatami Mats, Mattresses (excluding those with coil or pocket springs)

Kitayatsu Incineration Plant  
(347 Kitayatsu-cho, Wakaba Ward)

☎043-308-7335

Kita Incineration Plant  
(727-1 Sankaku-cho, Hanamigawa Ward)

☎043-258-5300

※Up to 10 items can be disposed of per day at both of the both facilities, such as futons, carpets, tatami mats and mattresses (excluding those with coil or pocket springs)

There are many facilities where over-sized rubbish can be disposed of! However, the facility where over-sized items can be disposed of depends on the item, so call and enquire to confirm!



# List of Incineration Plants

## Makuhari Clean Center



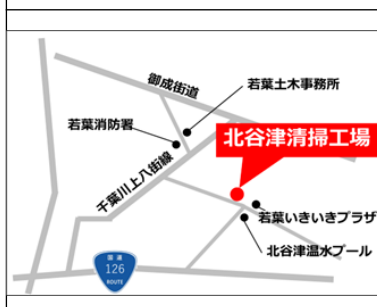
Address	1-1-4 Utase, Mihama Ward
Enquiries	043-276-9681
Accepts	Burnable Rubbish Non-Burnable Rubbish ※Only collects rubbish disposed of using the Pneumatic Rubbish Disposal System

## Niihama Recycling Center



Address	4 Niihama-cho, Chuo Ward
Enquiries	043-263-9100
Accepts	Non-Burnable Rubbish Over-Sized Rubbish Glass Bottles, Cans and PET Bottles

## Kitayatsu Incineration Plant



Address	347 Kitayatsu-cho, Wakaba Ward
Enquiries	043-308-7335
Accepts	Burnable Rubbish

## Kita Incineration Plant



Address	727-1 Sankaku-cho, Hanamigawa Ward
Enquiries	043-258-5300
Accepts	Burnable Rubbish

※Rubbish can be brought to Niihama Recycling Center, Kitayatsu Incineration Plant and Kita Incineration Plant on weekdays from 13:00-16:00 (rubbish cannot be brought to these facilities on the weekends, public holidays and during New Year's holidays)

※Rubbish also cannot be brought to these facilities on regular maintenance days, so please enquire in advance.

※Please note that depending on the model of car navigation system, directions may not be given correctly.

## Chuo and Mihama Environmental Center



Address	8-1-17 Makino-cho, Chuo Ward
Enquiries	043-231-6342

## Hanamigawa and Inage Environmental Center



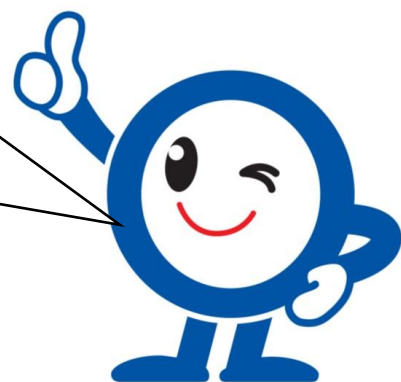
Address	2147-7 Makino-cho, Inage Ward
Enquiries	043-259-1145

Please enquire with your nearest Environmental Center regarding the disposal of the following:

- Processing removal requests for dead pets (cats and dogs)
- Reporting illegal dumping or theft

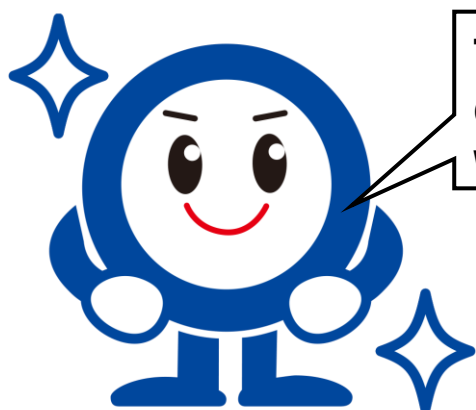


In addition to the Japanese version of the "Guide to Dispose of Rubbish Using the Pneumatic Rubbish Disposal System" guidebook, there also English, Chinese and Korean versions available! Those who don't speak Japanese don't have to worry anymore!



# Quick Rubbish Disposal Guide

Type of Rubbish		Disposal Method	Disposal Times
Burnable Rubbish	Accepted Rubbish Items	Can be disposed of in the disposal chute	06:00-19:00 Daily
	Prohibited Rubbish Items	①Contact the Over-Sized Rubbish Collection Center ②Put the items into a designated rubbish bag or stick a designated rubbish bag to the item and put them out for disposal at the designated rubbish disposal spot	Until 08:00 (on the day specified by the Over-Sized Rubbish Collection Center)
Non-Burnable Rubbish	Accepted Rubbish Items	Can be disposed of in the disposal chute	07:00-18:00 Mondays, Wednesdays, Fridays
	Prohibited Rubbish Items	①Contact the Over-Sized Rubbish Collection Center ②Put the items into a designated rubbish bag or stick a designated rubbish bag to the item and put them out for disposal at the designated rubbish disposal spot	Until 08:00 (on the day specified by the Over-Sized Rubbish Collection Center)
Over-Sized Rubbish		①Contact the Over-Sized Rubbish Collection Center ②Stick the over-sized rubbish payment voucher to the rubbish item and put it out for disposal at the designated over-sized rubbish collection spot.	
Hazardous Waste		Put the rubbish items into a clear rubbish bag and put them out for disposal at the designated rubbish disposal spot	Until 08:00 Every 2nd and 4th Tuesday
Recyclables	Glass Bottles, Cans and PET Bottles	Put the items out for disposal at the designated rubbish disposal spot	Until 08:00 1-chome: Wednesdays 2 and 3-chome: Thursday
	Old Paper and Old Clothes		Until 08:00 Fridays
	Tree Branches, Cut Grass and Leaves	①Contact the Chuo and Mihama Environmental Center ②Put the items out for disposal at the designated rubbish disposal spot	Until 08:00 (on the day specified by the Chuo and Mihama Environmental Center)



The disposal method is different for each rubbish item! Let's be careful when disposing of our rubbish!

Published: February 2025

Waste Treatment Facilities Maintenance Division, Resource Circulation Department, Environmental Bureau

☎ : 043-245-5653 FAX : 043-245-5477 Email : shisetsuiji.enr@city.chiba.lg.jp