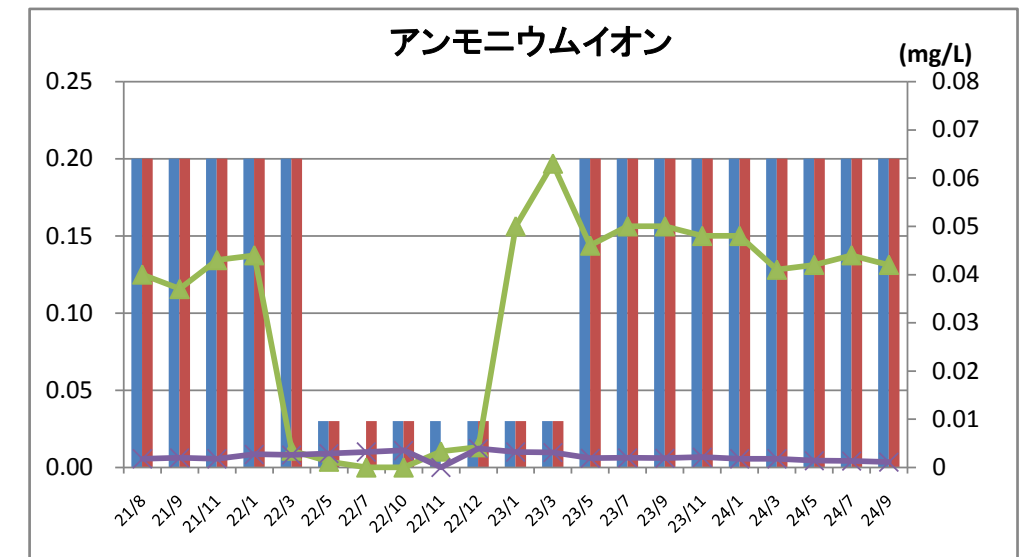
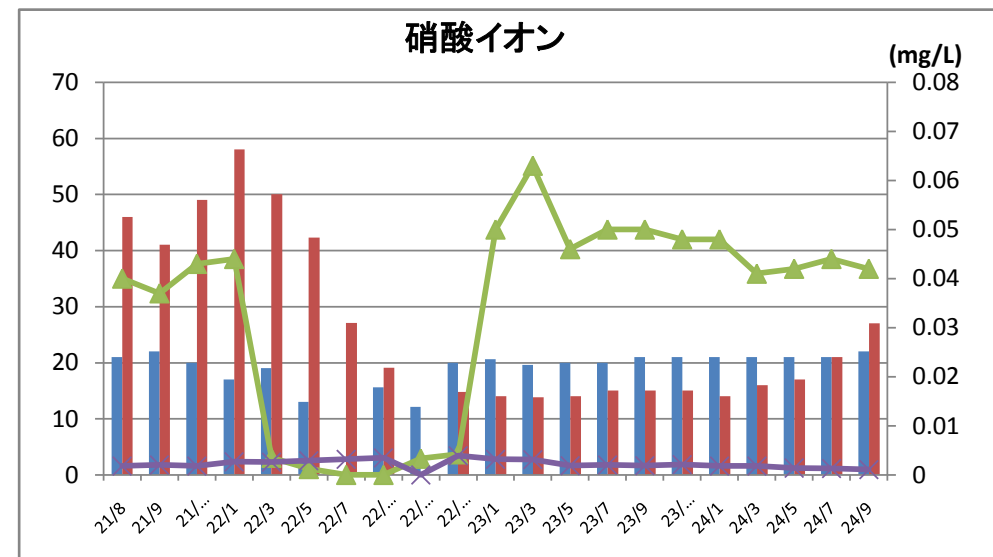
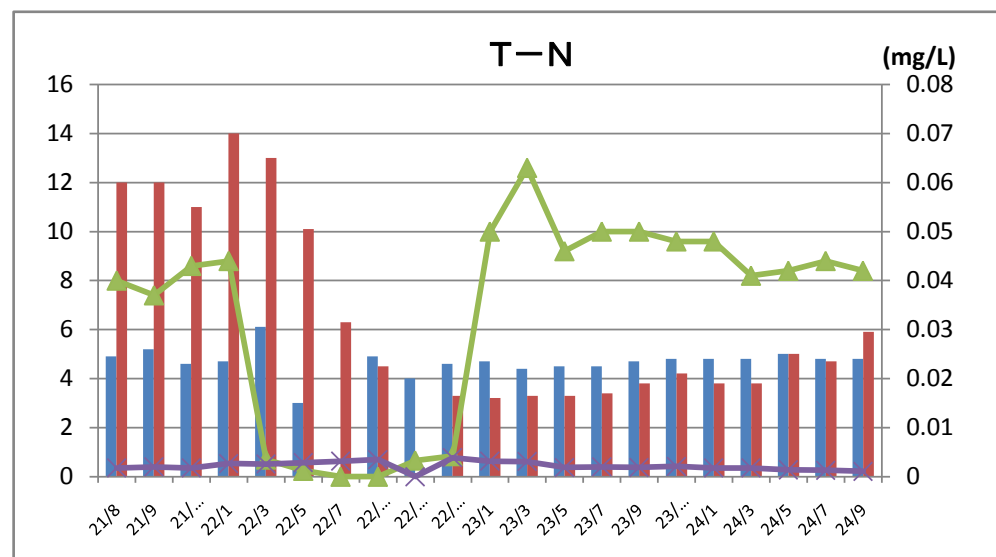
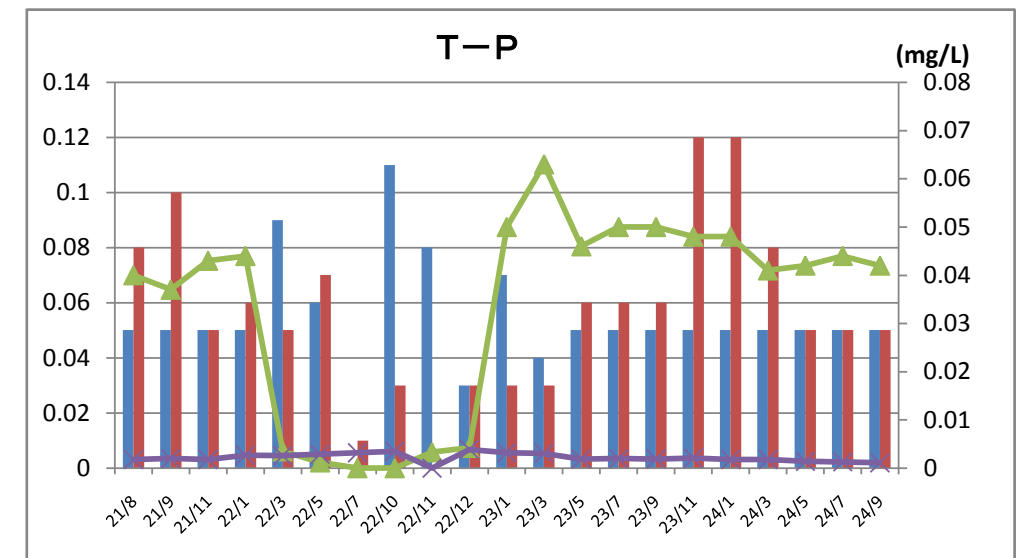
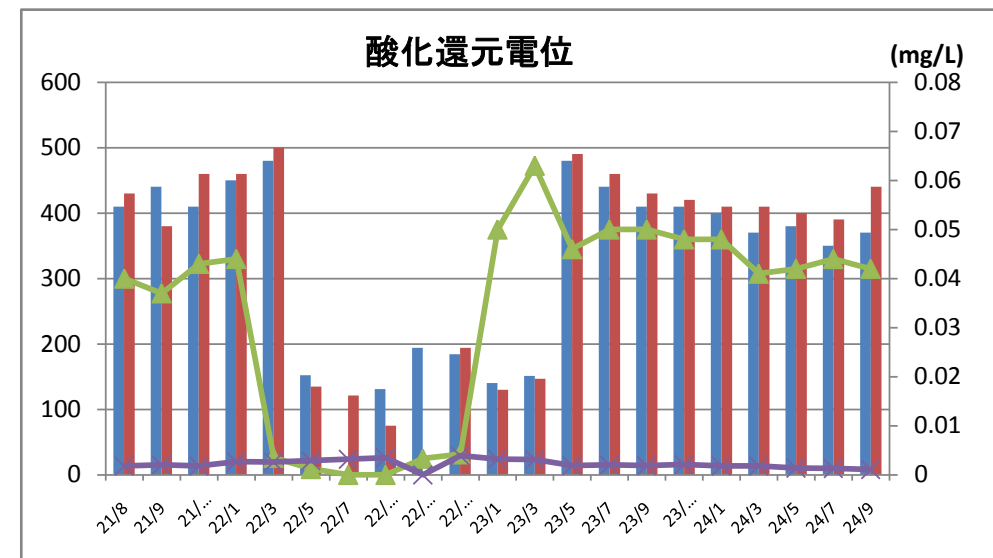
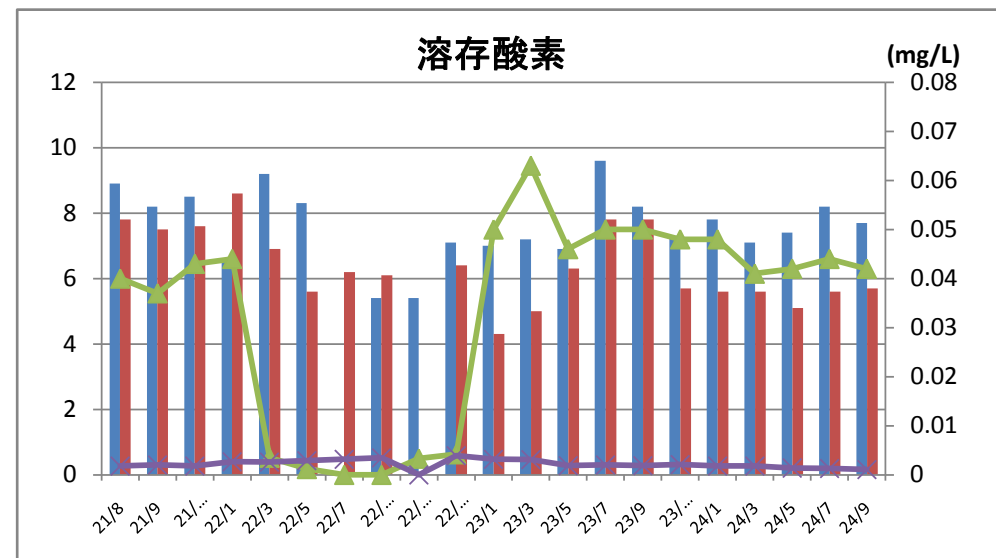
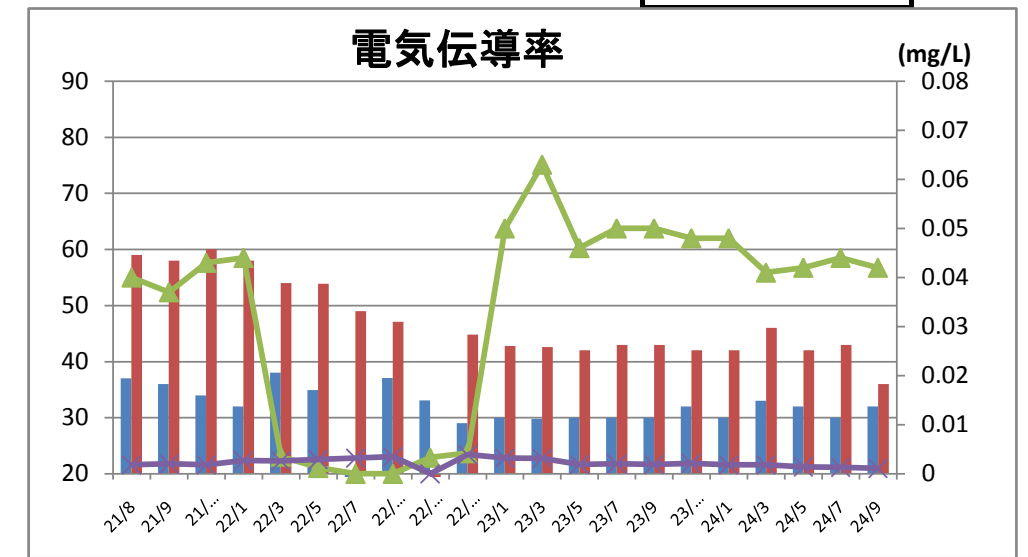
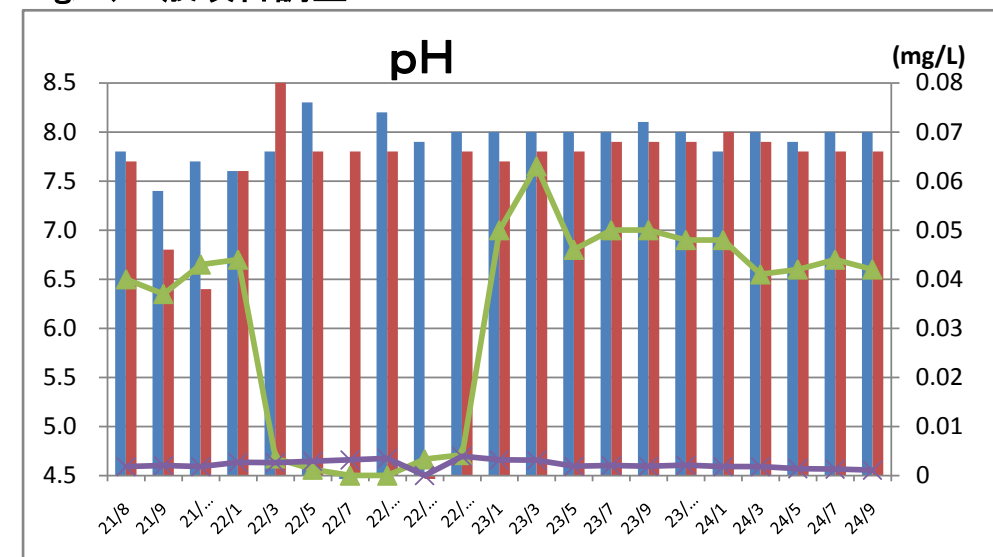
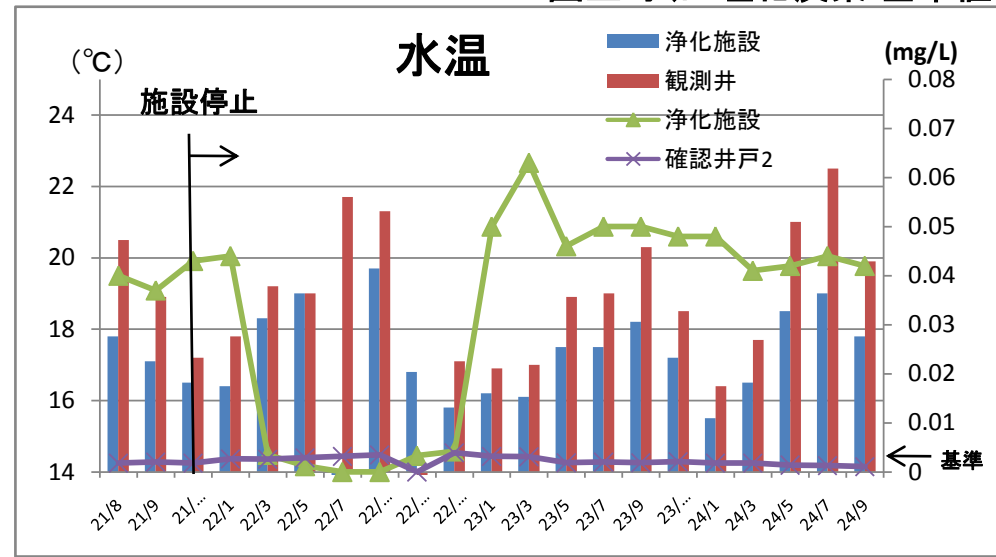


園生町(四塩化炭素 基準値0.002mg/L)一般項目調査

(傍聴者用)

参考資料4



定量下限値一覧①

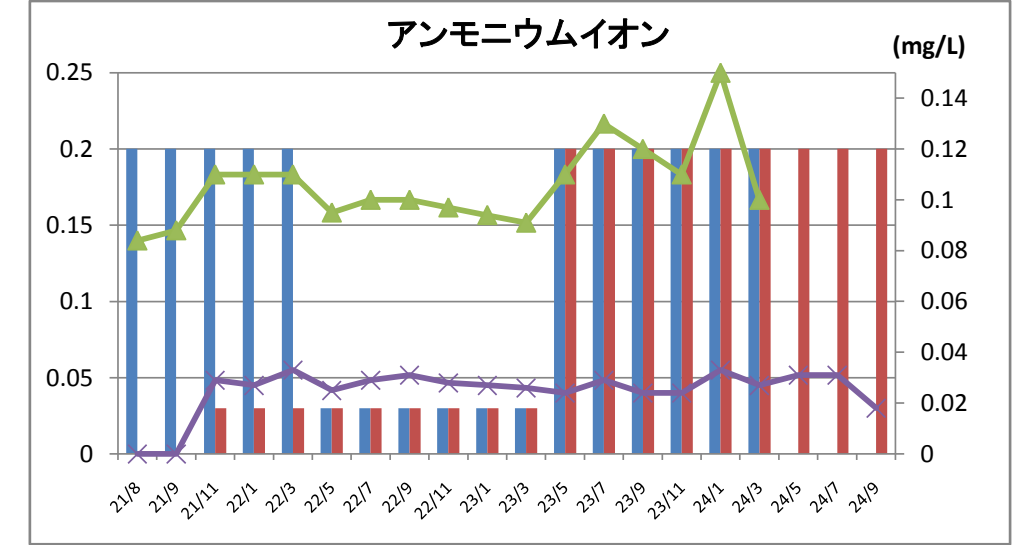
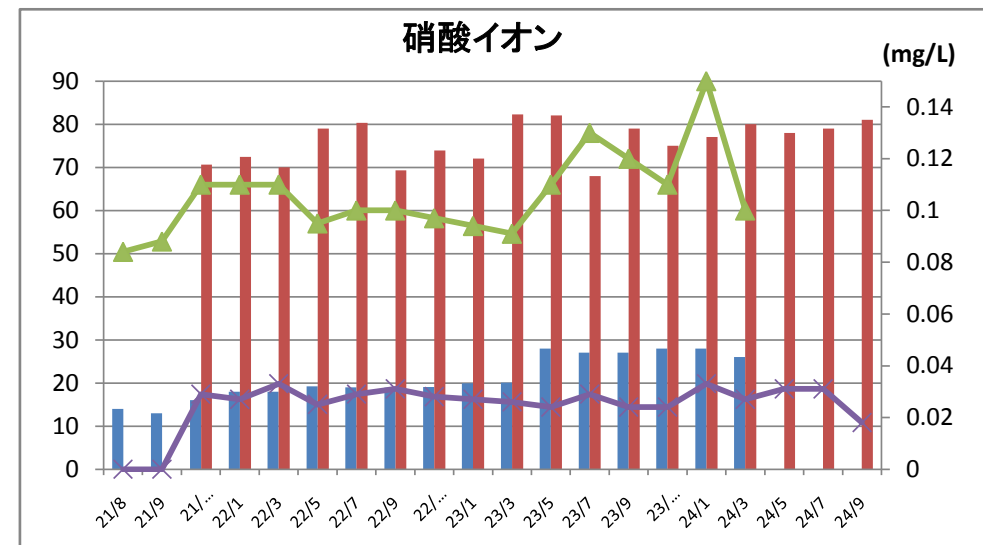
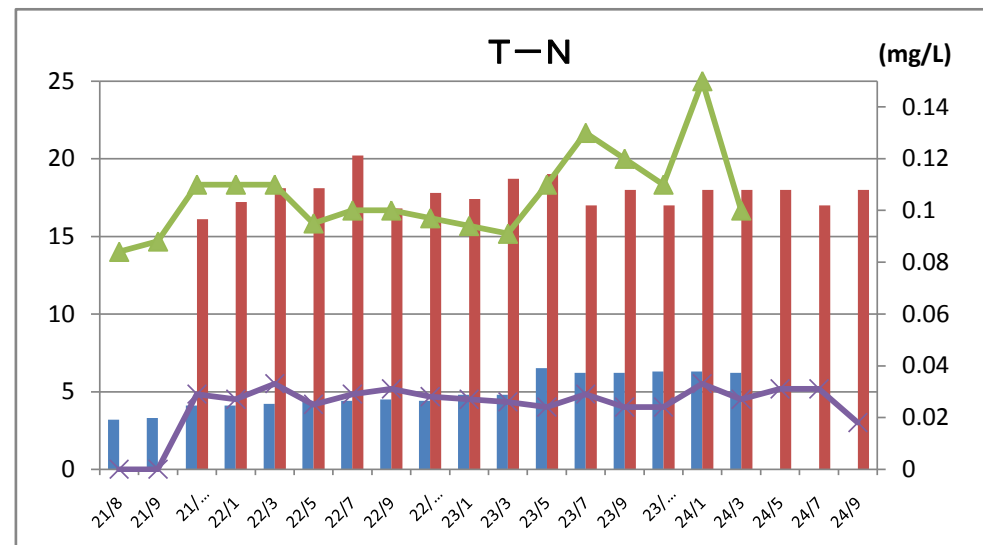
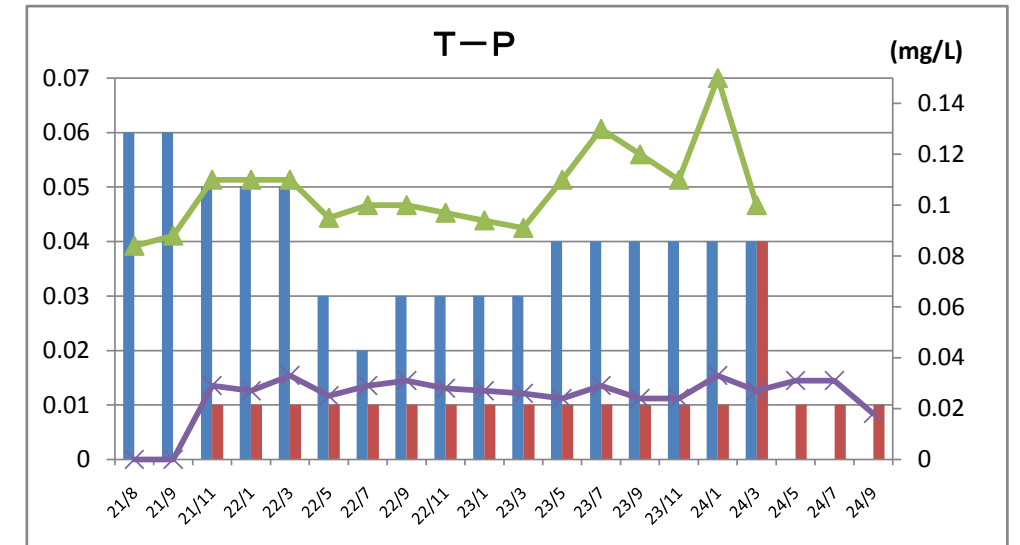
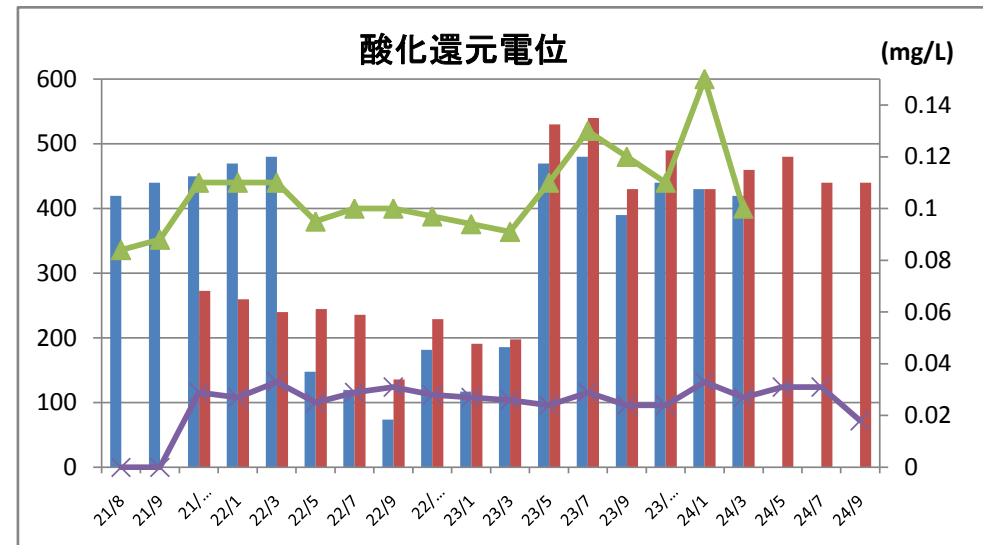
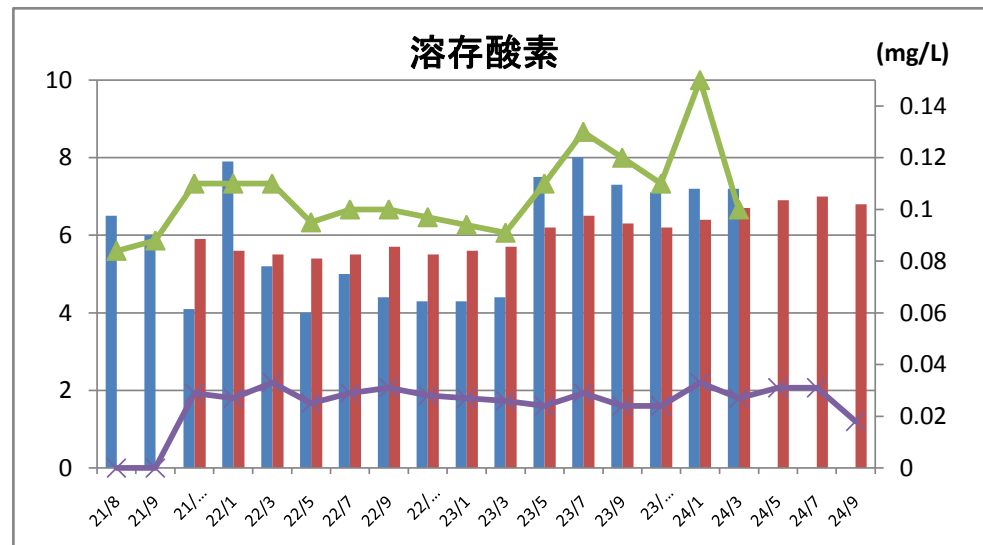
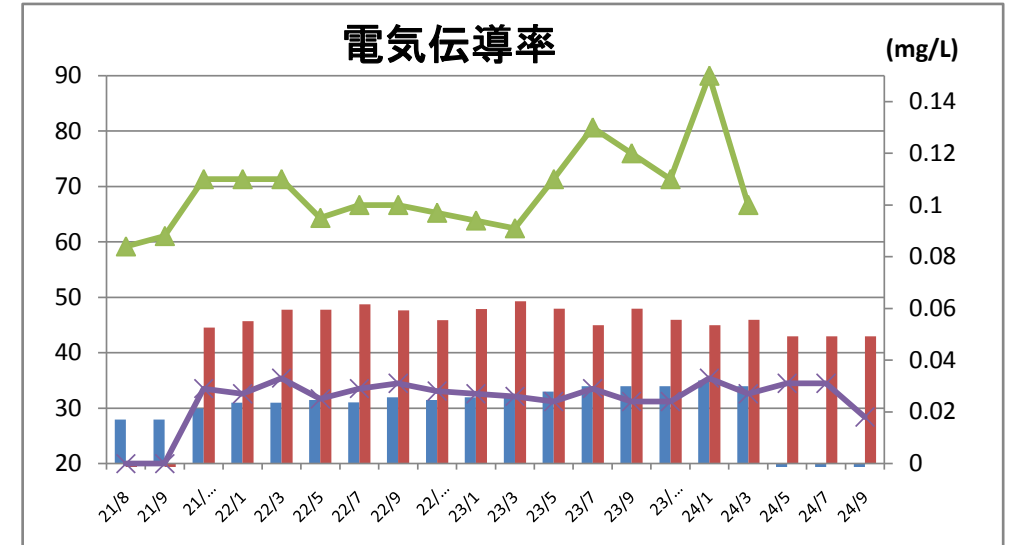
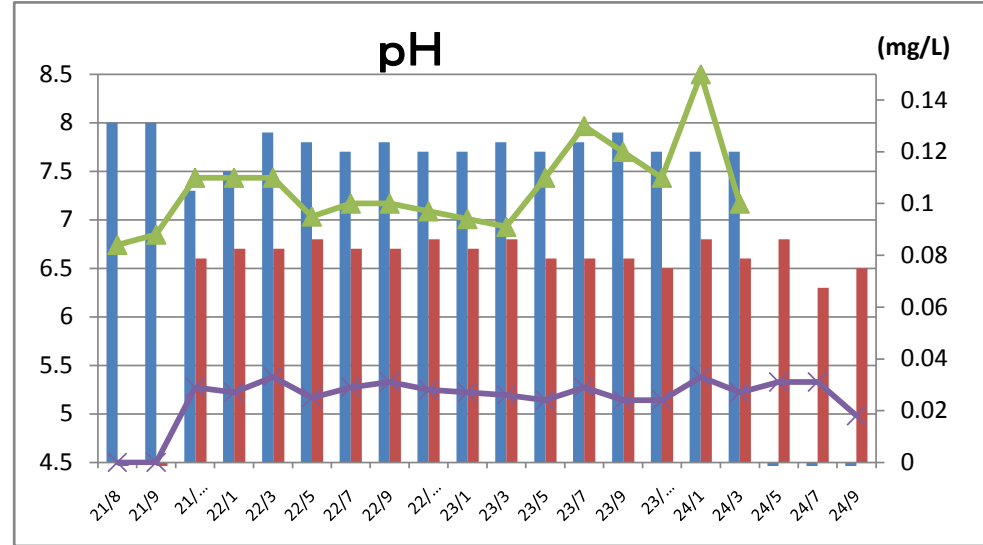
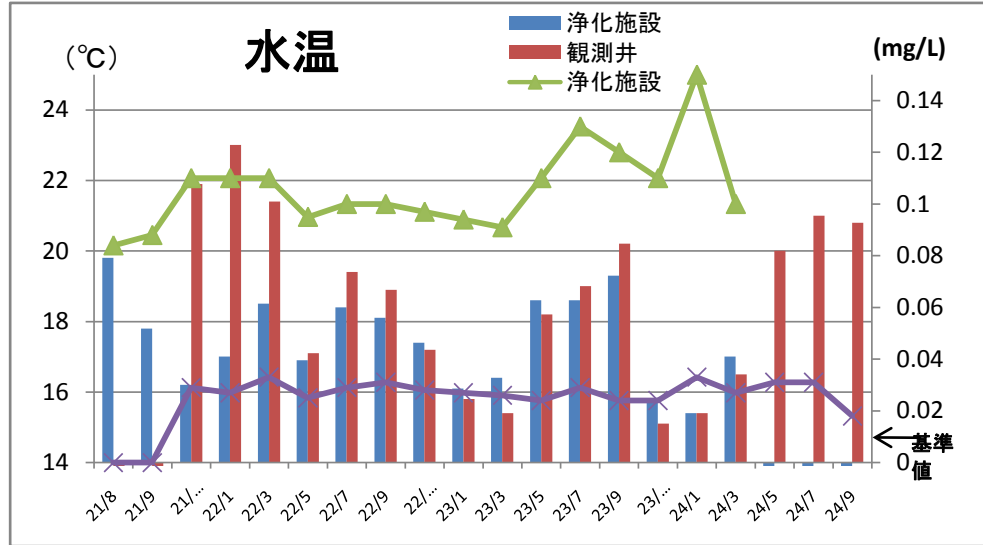
項目	下限値	単位
水温	—	°C
pH	—	—
電気伝導率	0.1	mS/m
溶存酸素	0.5	mg/L
酸化還元電位	—	mV

定量下限値一覧②

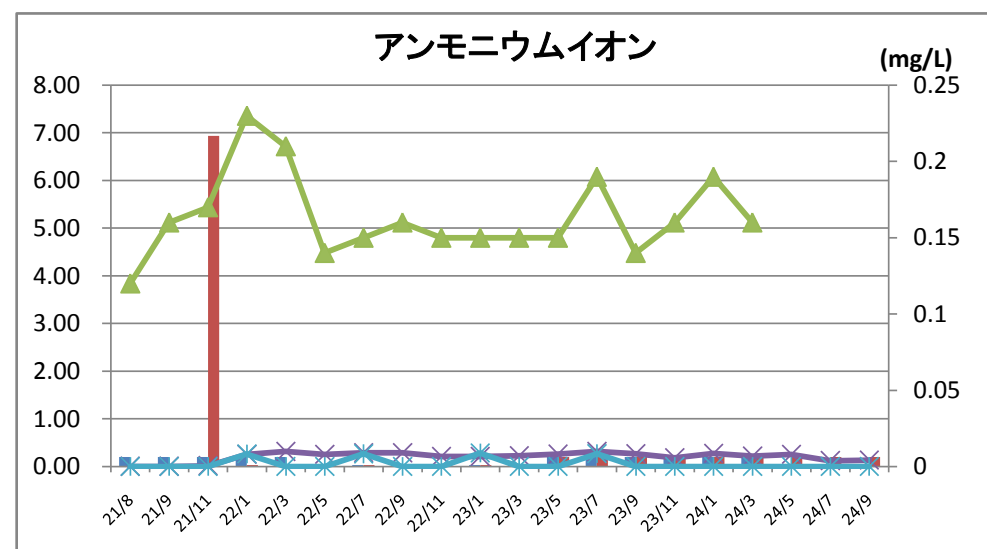
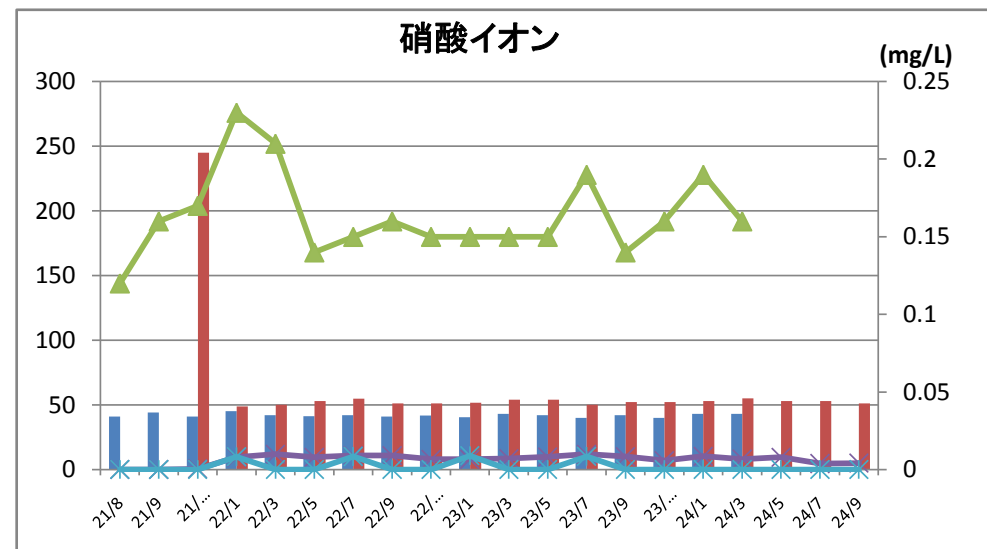
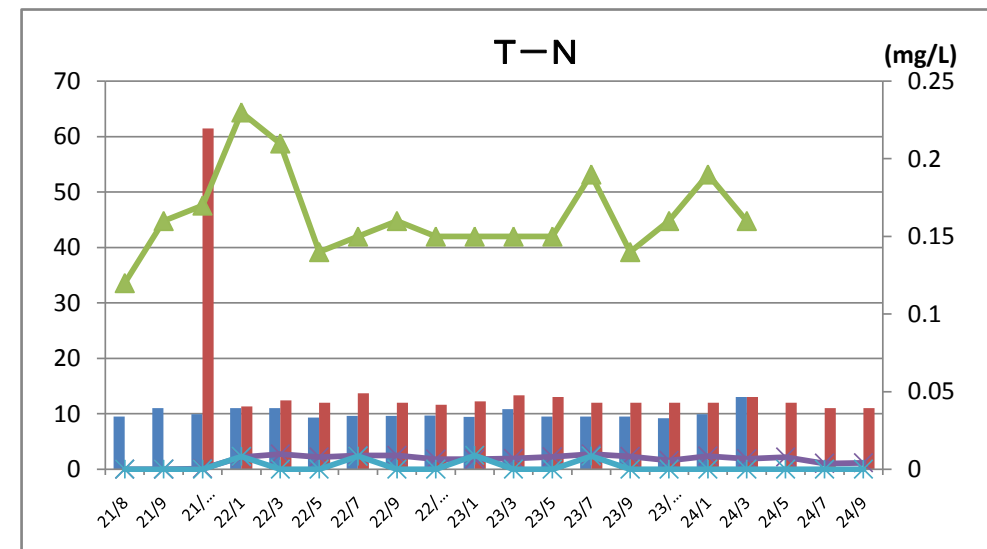
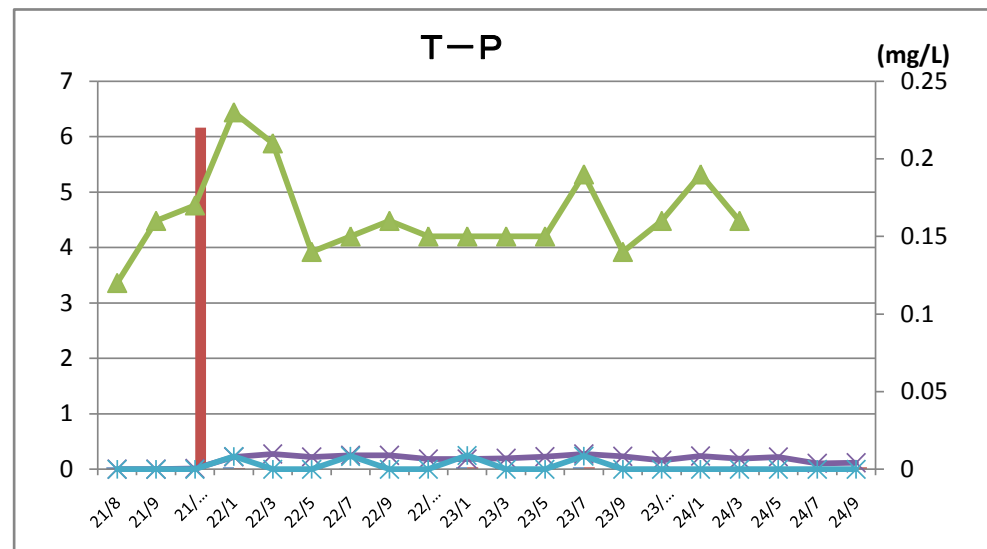
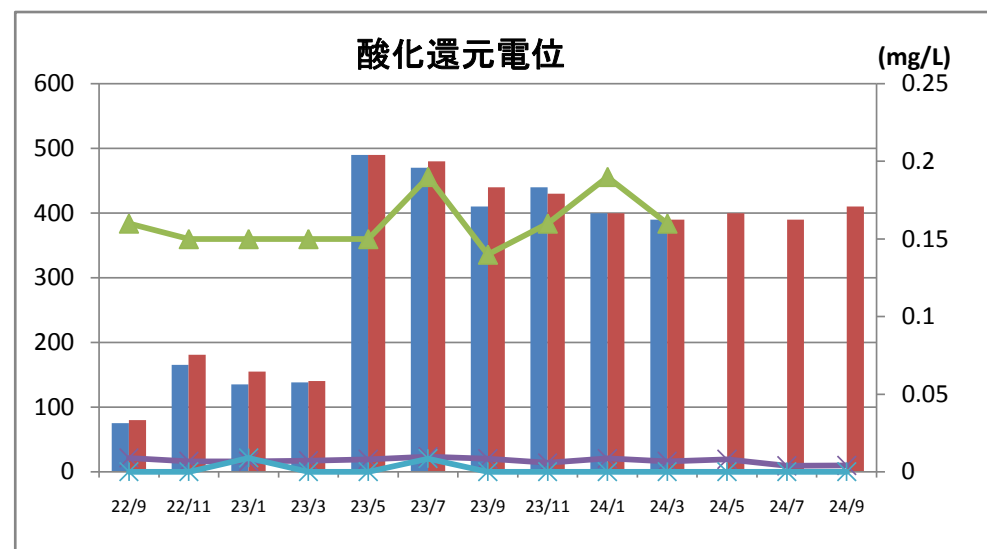
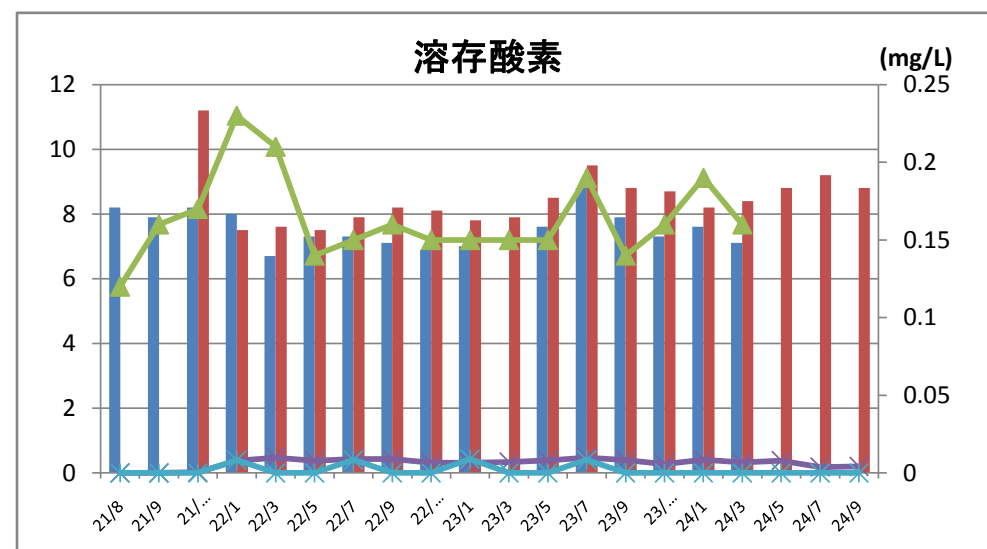
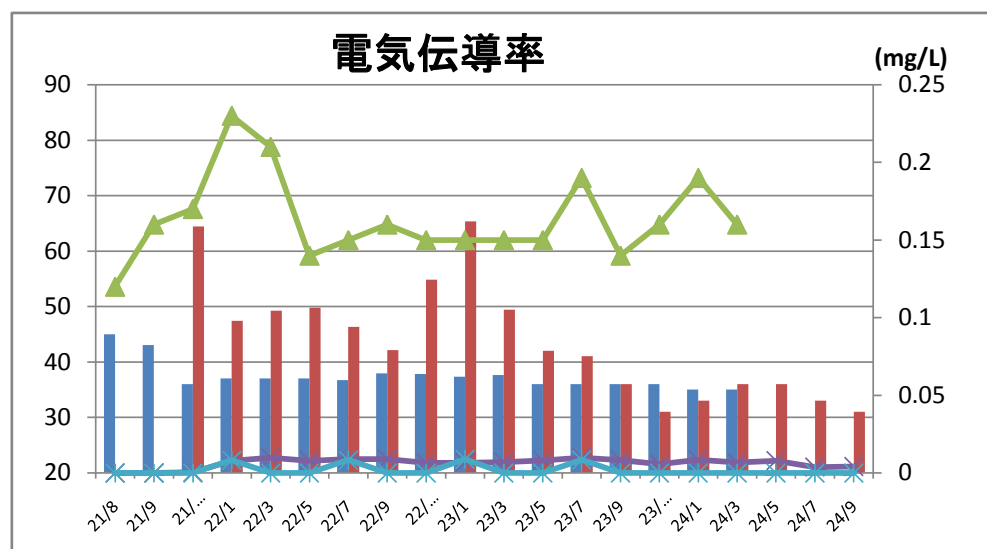
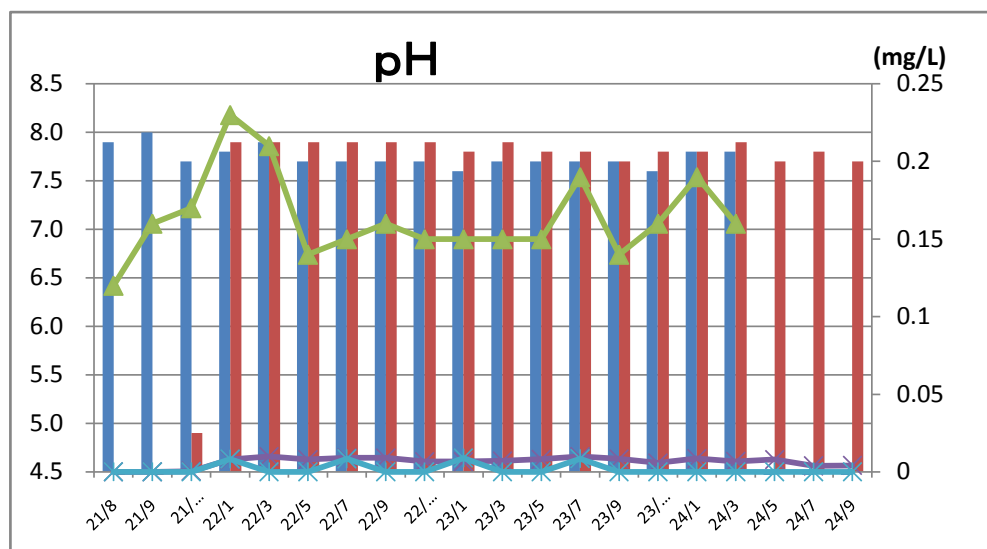
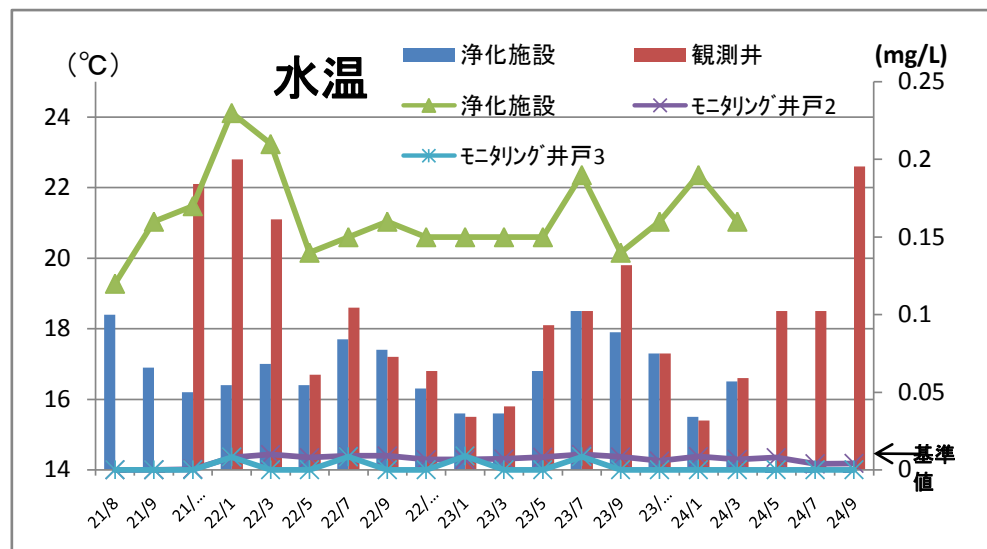
項目	下限値	単位
T-P	0.01	mg/L
T-N	0.2	mg/L
硝酸イオン	0.05	mg/L
アンモニウムイオン	0.2(21/23/24年度)	mg/L
	0.03(22年度)	

※定量下限値未満の数値については定量下限値相当として掲載

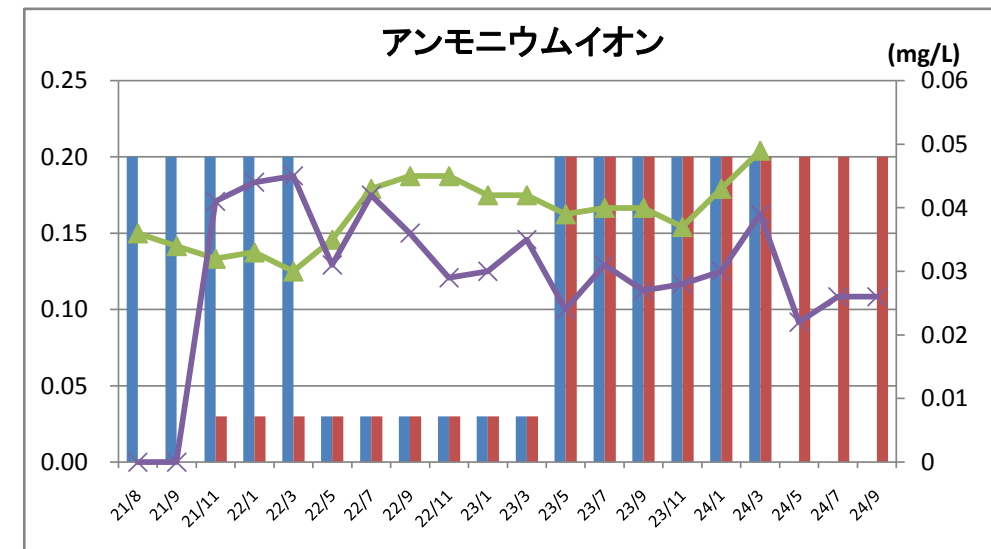
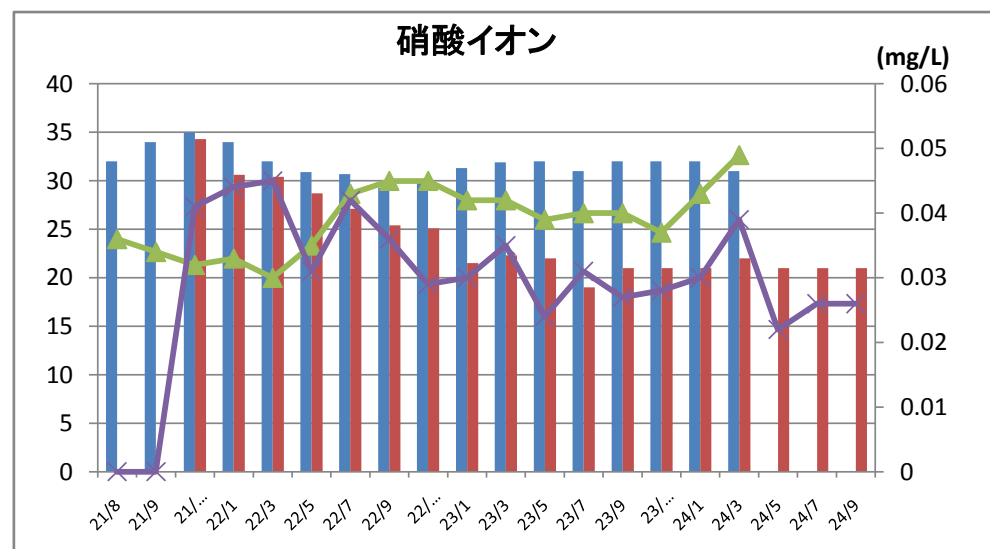
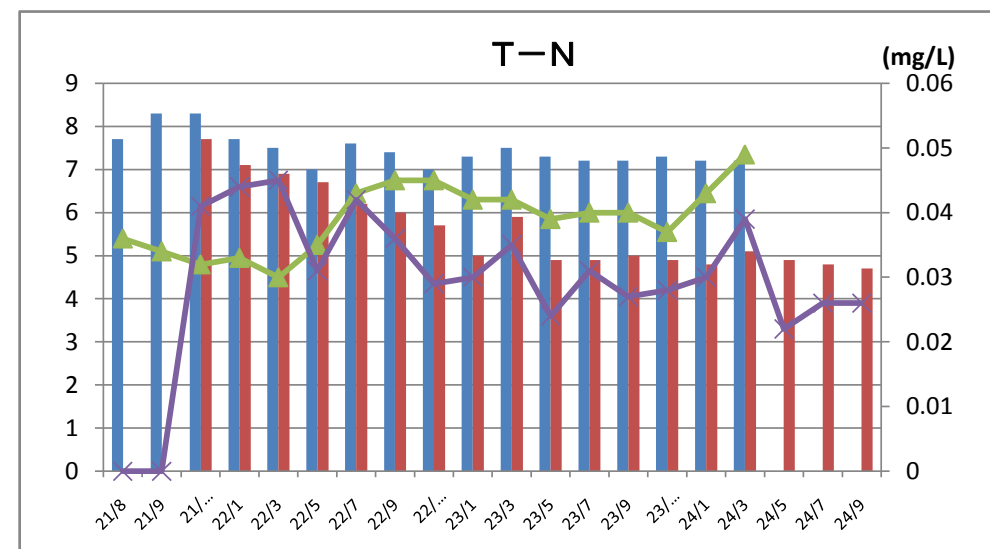
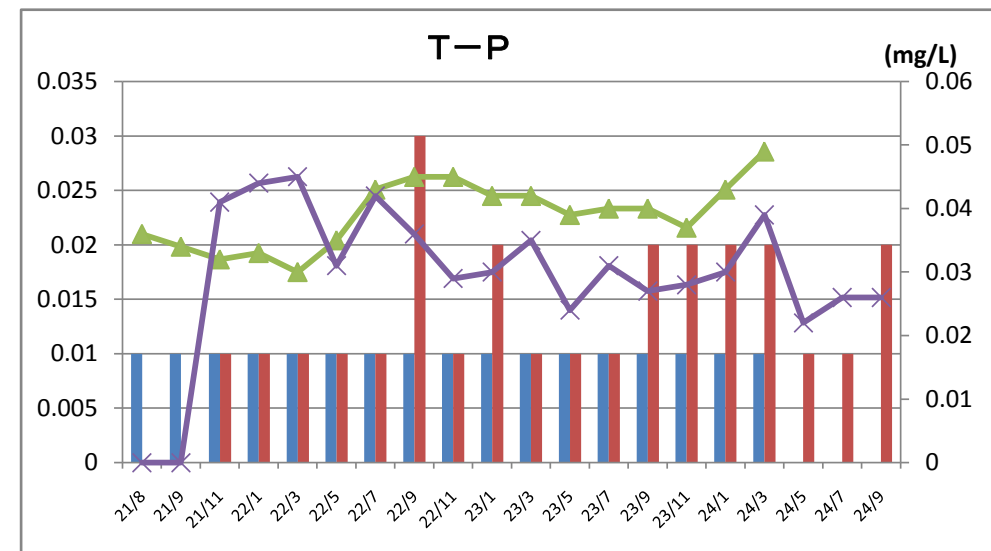
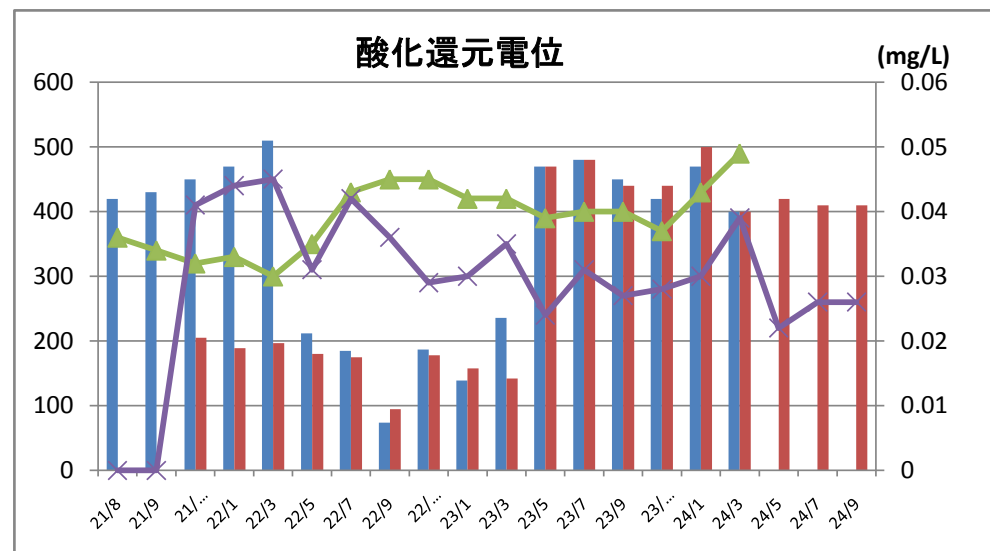
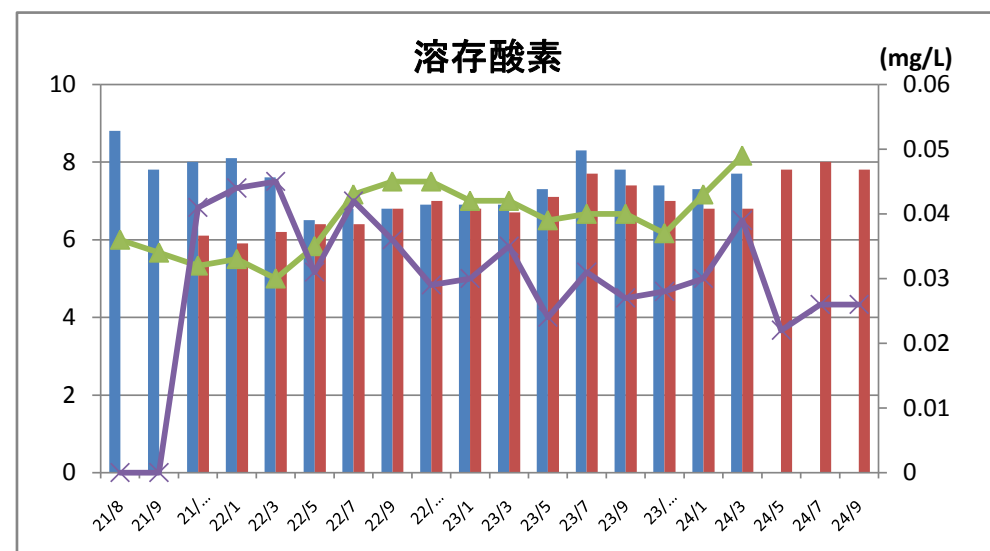
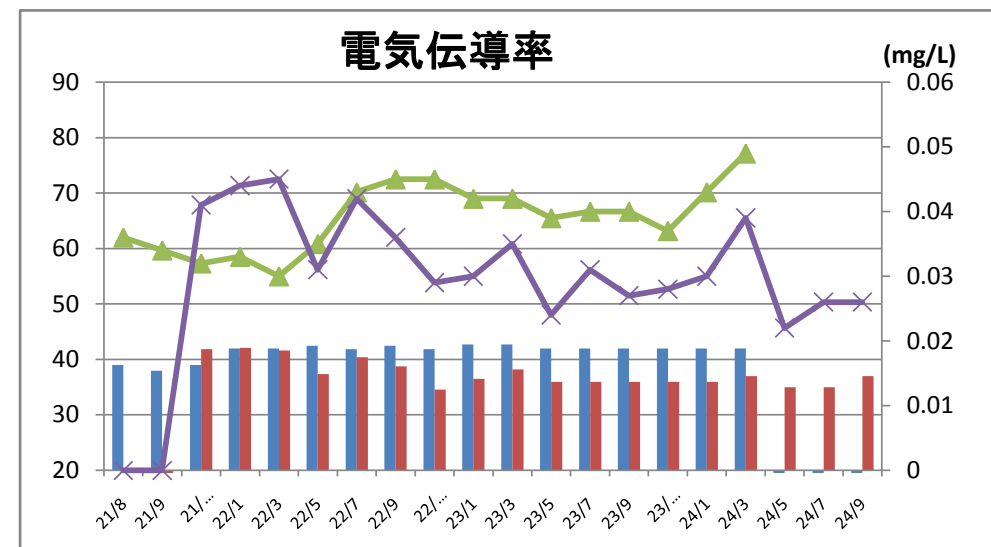
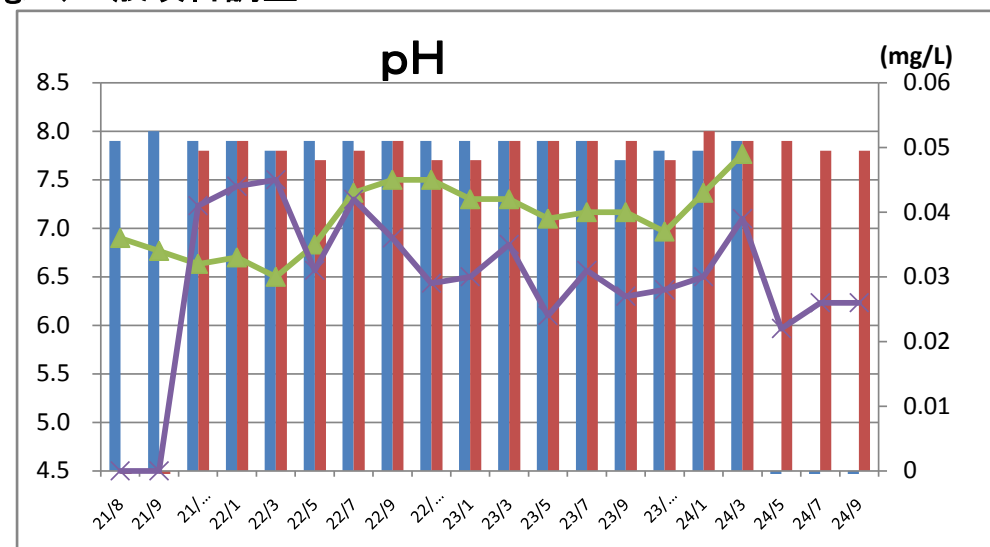
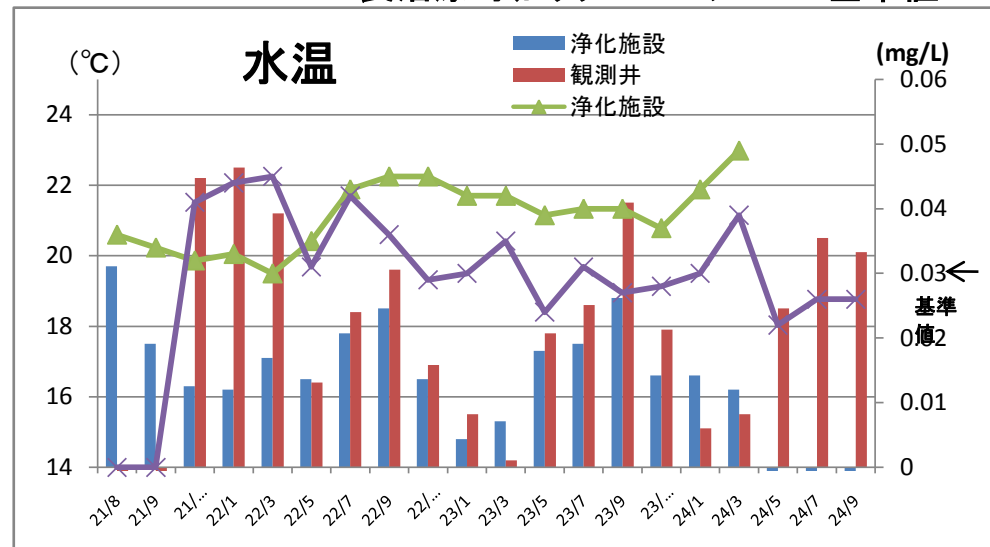
山王町(テトラクロロエチレン 基準値0.01mg/L)一般項目調査



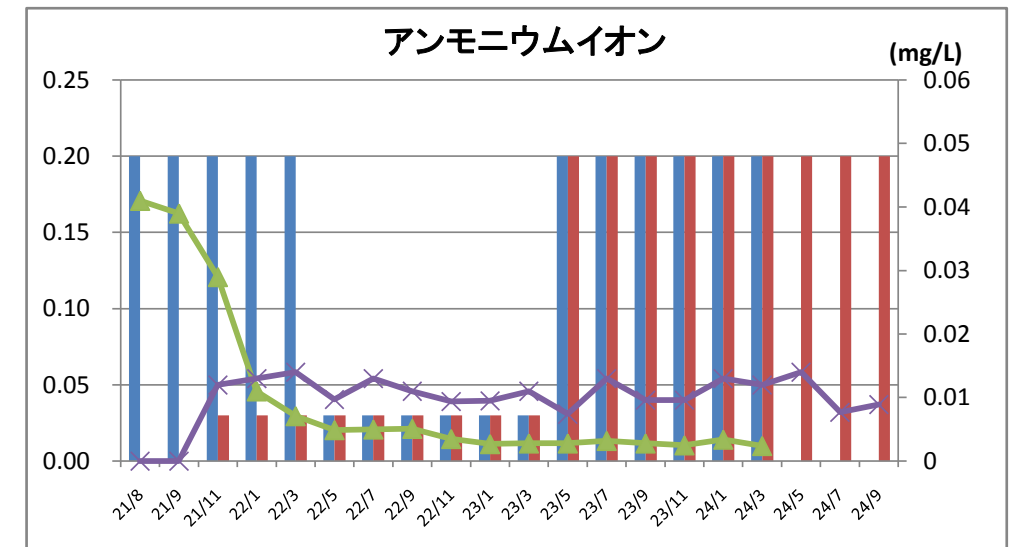
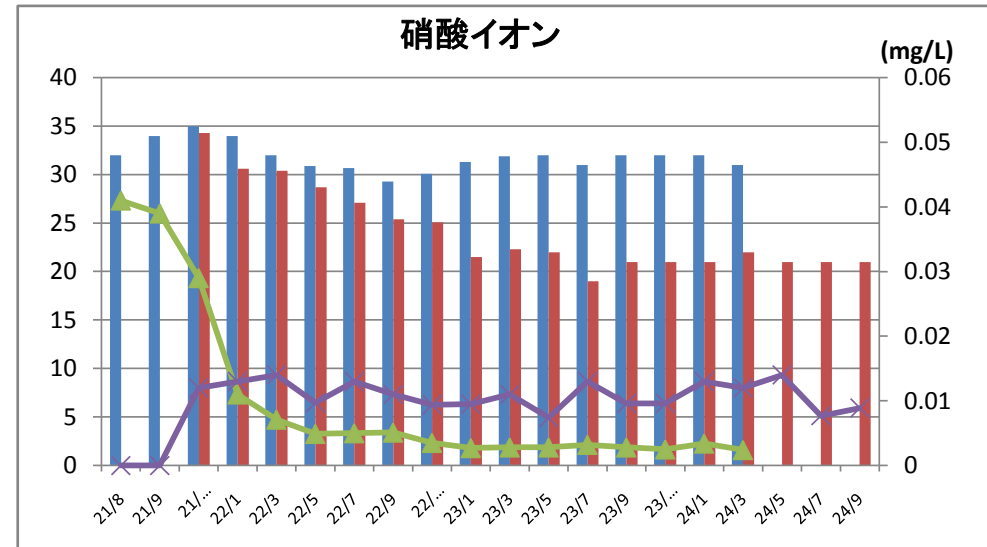
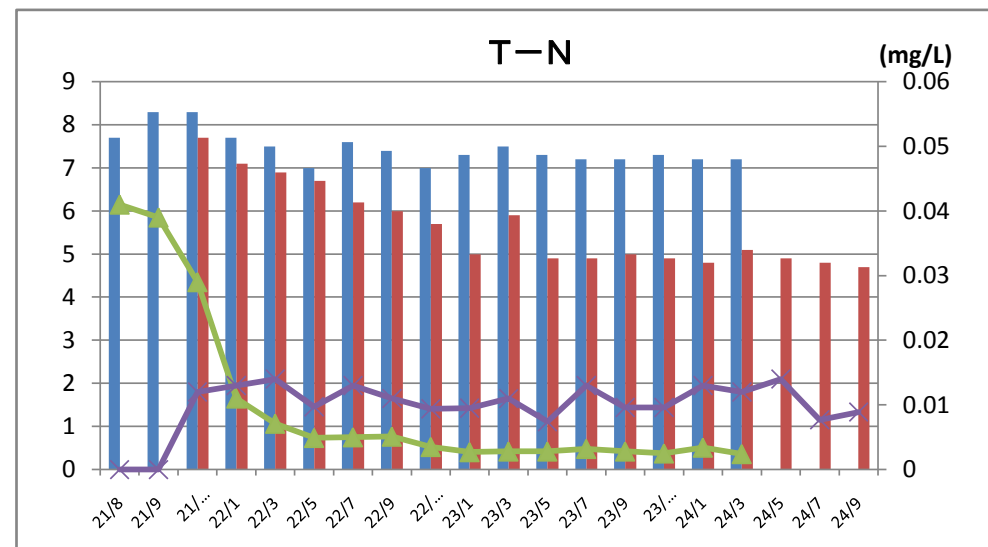
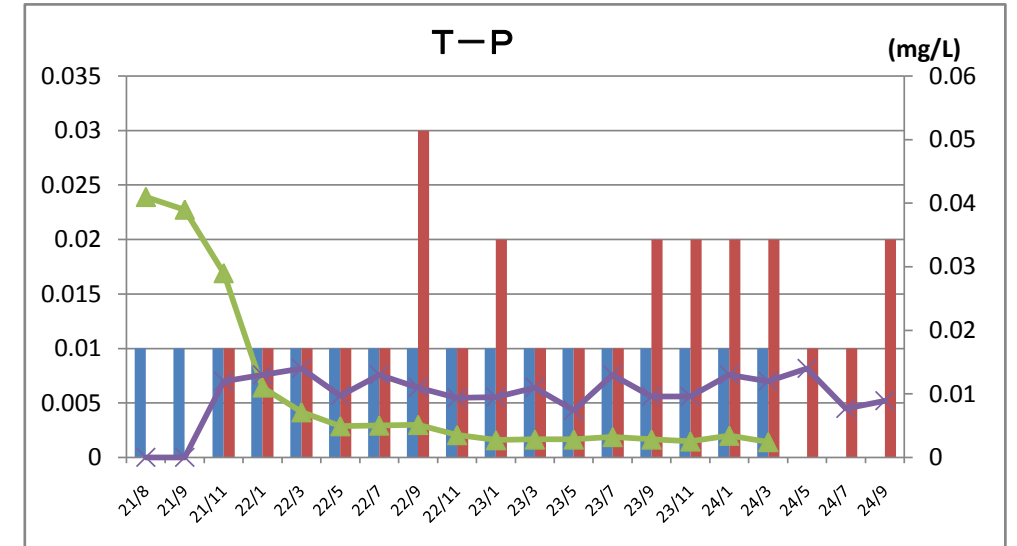
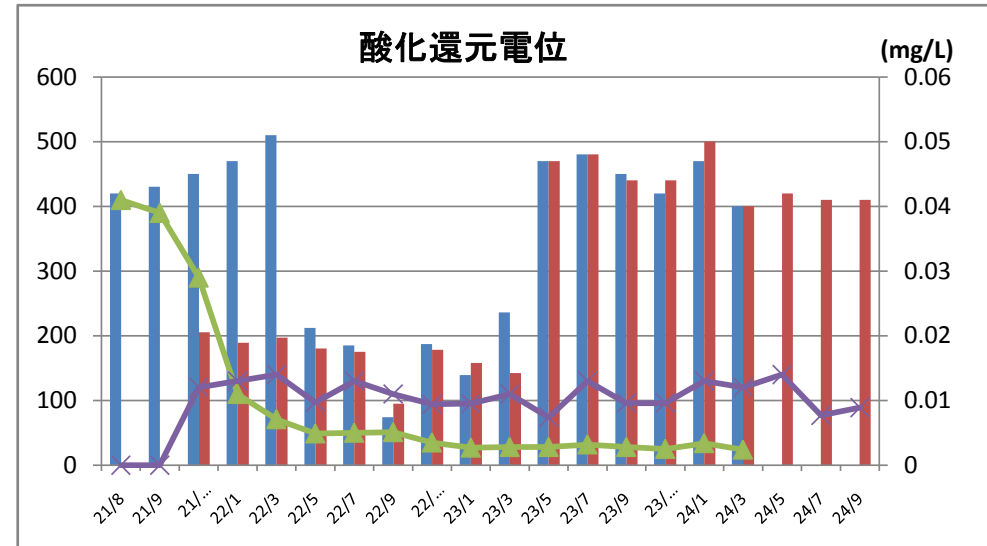
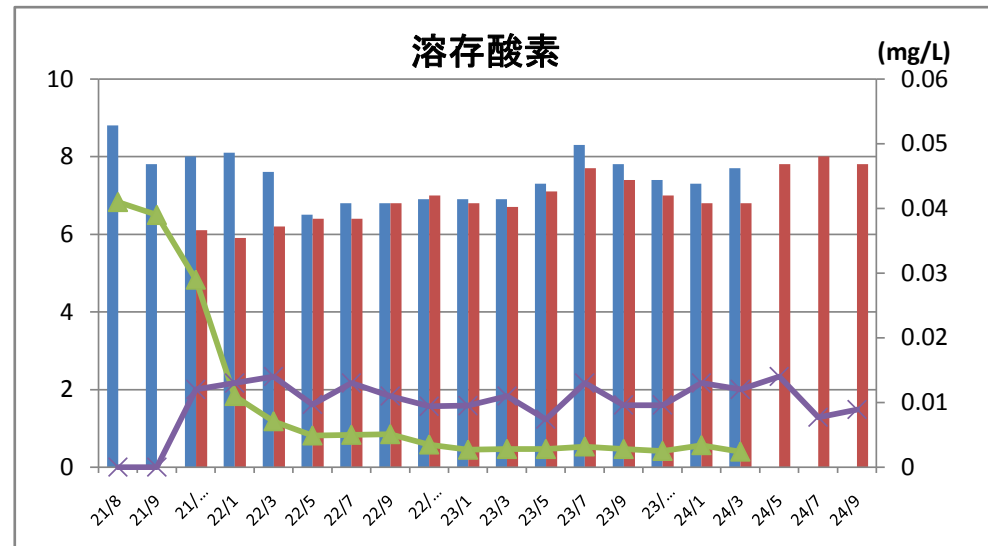
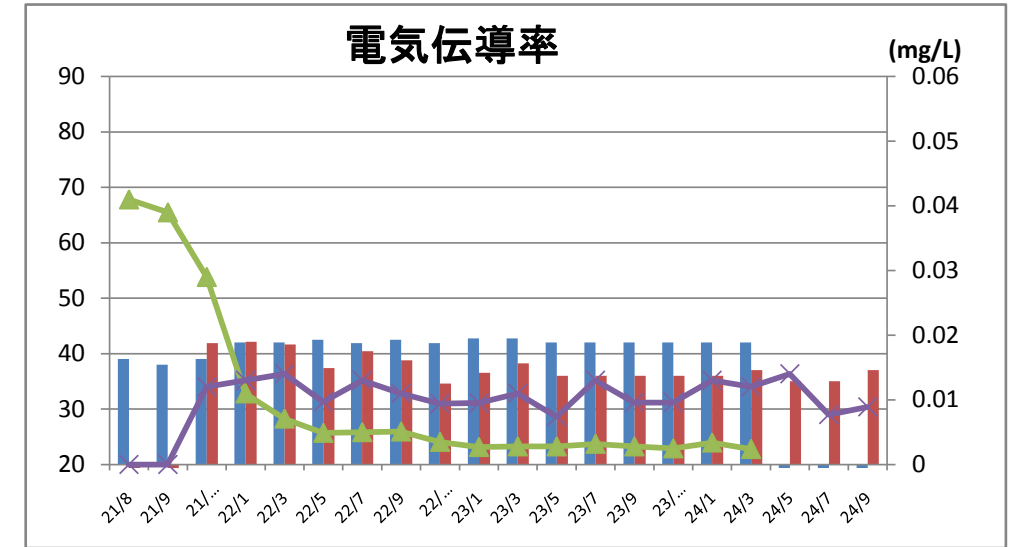
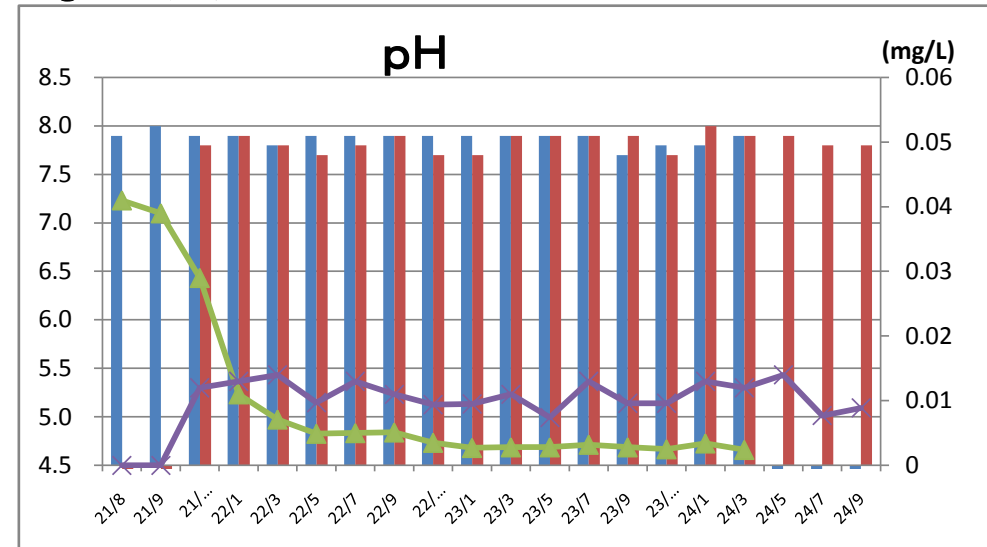
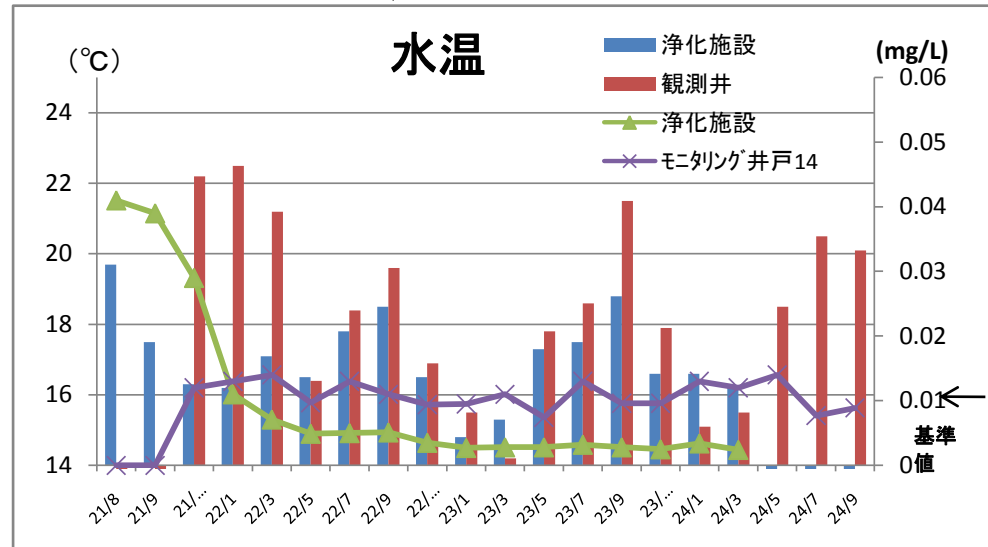
三角町(テトラクロロエチレン 基準値0.01mg/L)一般項目



長沼原町(トリクロロエチレン 基準値0.03mg/L)一般項目調査



長沼原町(テトラクロロエチレン 基準値0.01mg/L)一般項目調査



長沼町(四塩化炭素 基準値0.002mg/L)一般項目調査

