

GC-MSチャート集

Quantify Sample Report MassLynx 4.1 SCN 803

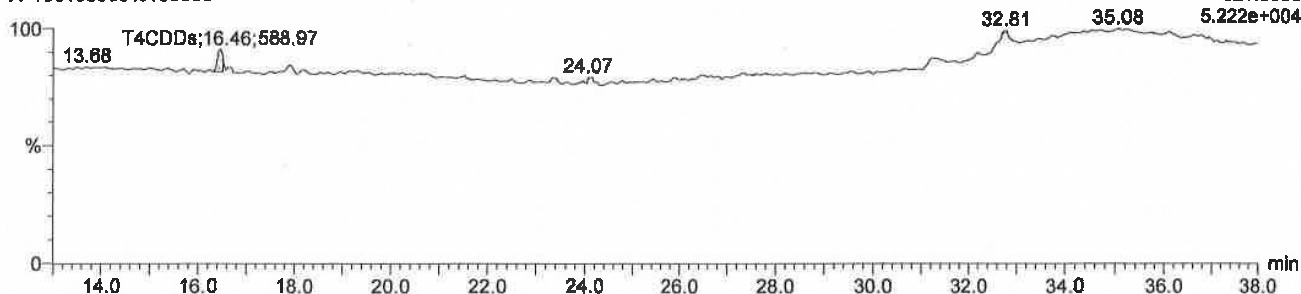
Dataset: C:\MassLynx\ERandS.pro\SP523190129-13.qld

Description: W-190100036%100608, Date: 01-Feb-2019, Time: 11:38:26

T4CDDs

W-190100036%100608 Smooth(Mn,1x3)
W-190100036%100608

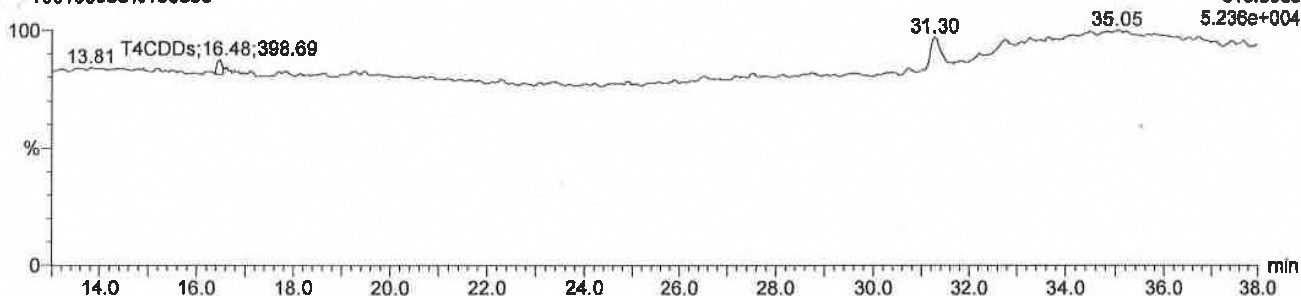
Voltage SIR,EI+
321.8936
5.222e+004



T4CDDs

W-190100036%100608 Smooth(Mn,1x3)
W-190100036%100608

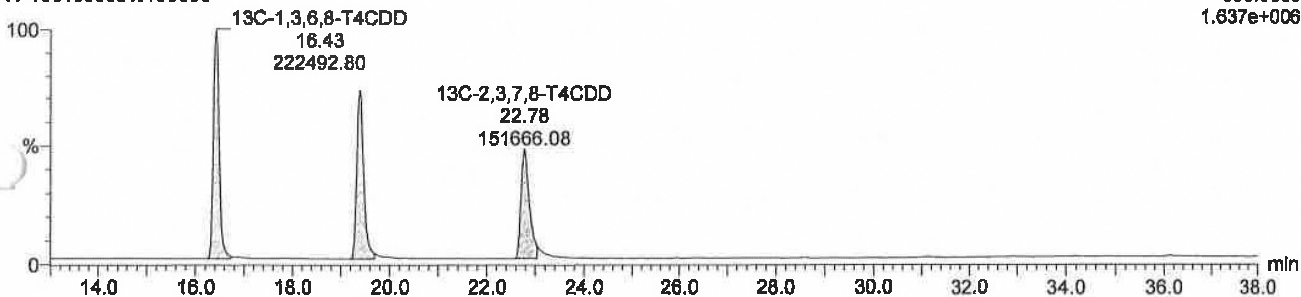
Voltage SIR,EI+
319.8965
5.236e+004



13C-T4CDDs

W-190100036%100608 Smooth(Mn,1x3)
W-190100036%100608

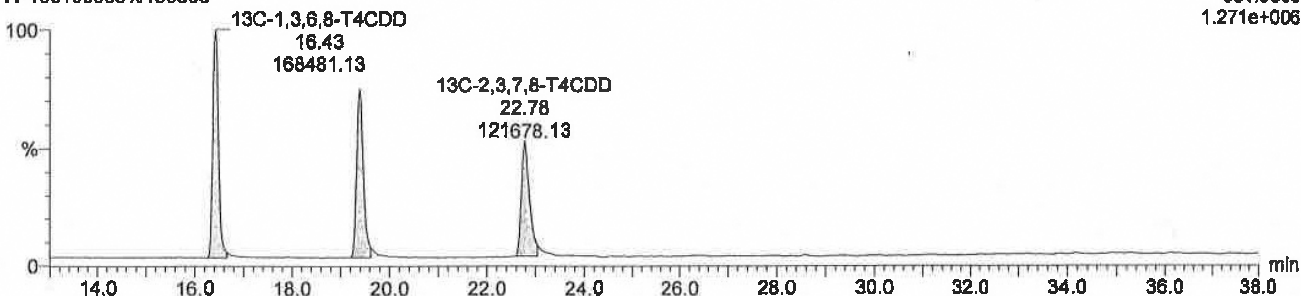
Voltage SIR,EI+
333.9339
1.637e+006



13C-T4CDDs

W-190100036%100608 Smooth(Mn,1x3)
W-190100036%100608

Voltage SIR,EI+
331.9368
1.271e+006



Quantify Sample Report MassLynx 4.1 SCN 803

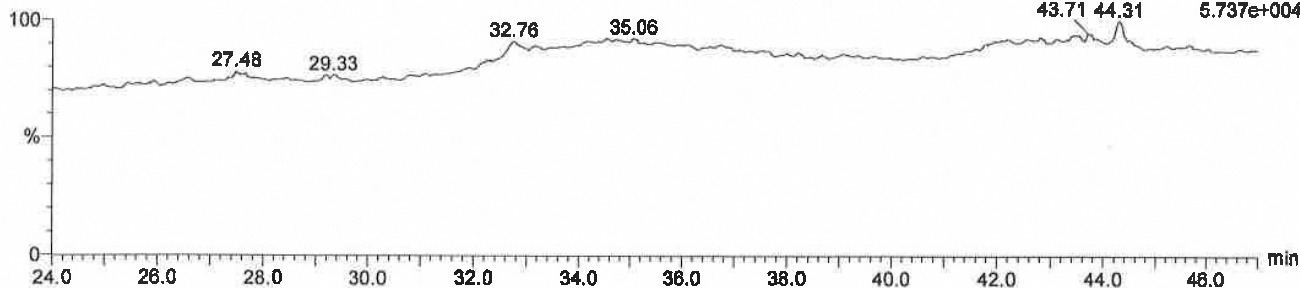
Dataset: C:\MassLynx\ERandS.pro\SP523190129-13.qld

Description: W-190100036%100608, Date: 01-Feb-2019, Time: 11:38:26

P5CDDs

W-190100036%100608 Smooth(Mn,1x3)
W-190100036%100608

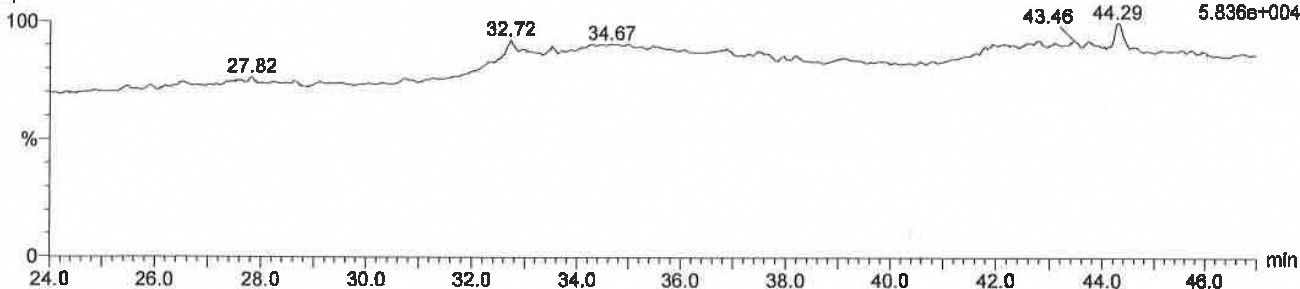
Voltage SIR,EI+
355.8546
5.737e+004



P5CDDs

W-190100036%100608 Smooth(Mn,1x3)
W-190100036%100608

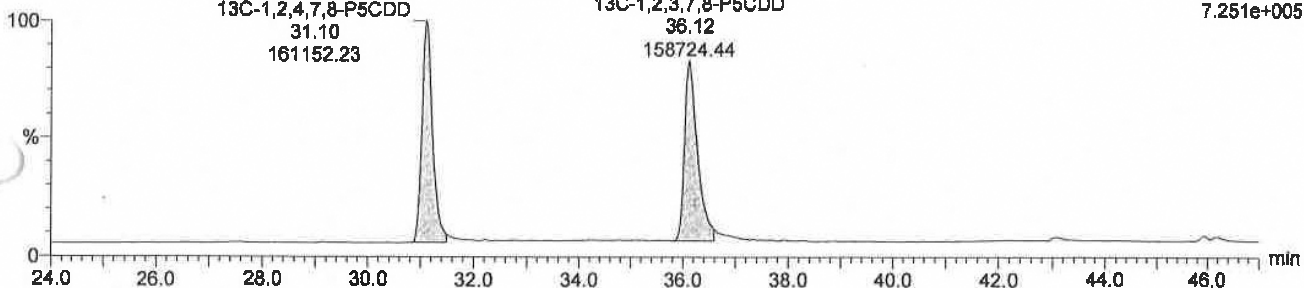
Voltage SIR,EI+
353.8576
5.836e+004



13C-P5CDDs

W-190100036%100608 Smooth(Mn,1x3)
W-190100036%100608

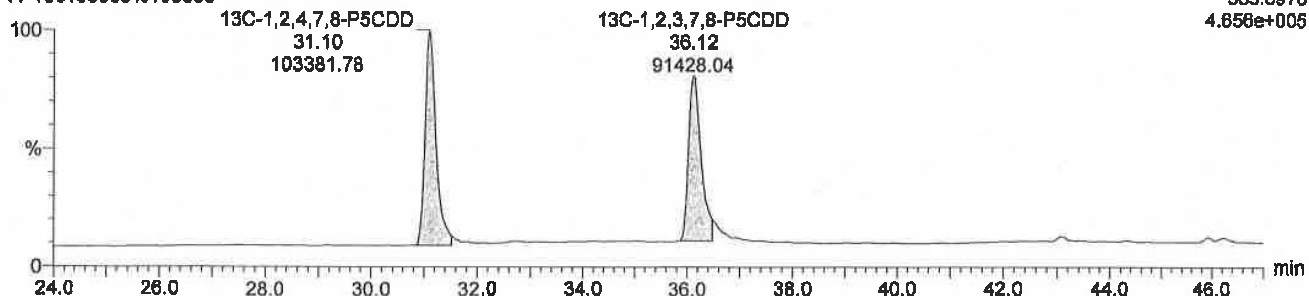
Voltage SIR,EI+
367.8949
7.251e+005



13C-P5CDDs

W-190100036%100608 Smooth(Mn,1x3)
W-190100036%100608

Voltage SIR,EI+
365.8978
4.658e+005



Quantify Sample Report MassLynx 4.1 SCN 803

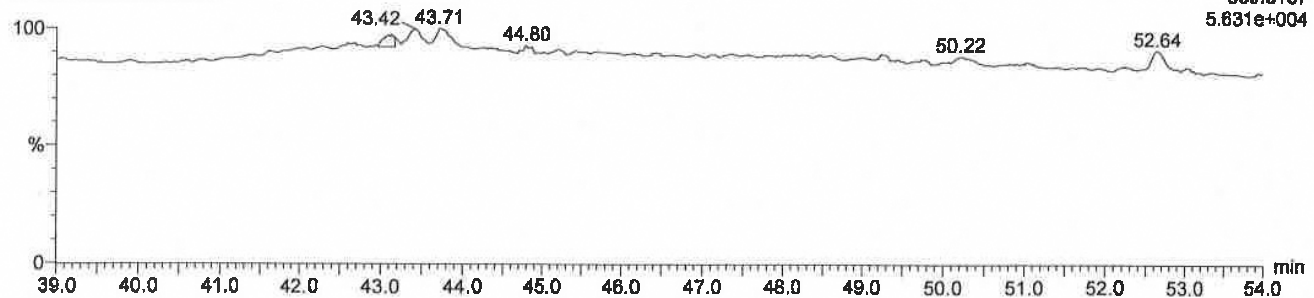
Dataset: C:\MassLynx\ERandS.pro\SP523190129-13.qld

Description: W-190100036%100608, Date: 01-Feb-2019, Time: 11:38:26

H6CDDs

W-190100036%100608 Smooth(Mn,1x3)
W-190100036%100608

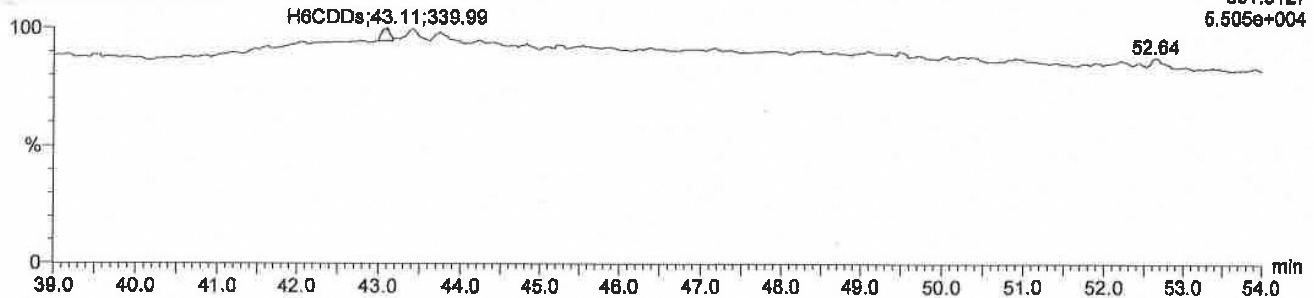
Voltage SIR,EI+
389.8157
5.631e+004



H6CDDs

190100036%100608 Smooth(Mn,1x3)
190100036%100608

Voltage SIR,EI+
391.8127
5.505e+004



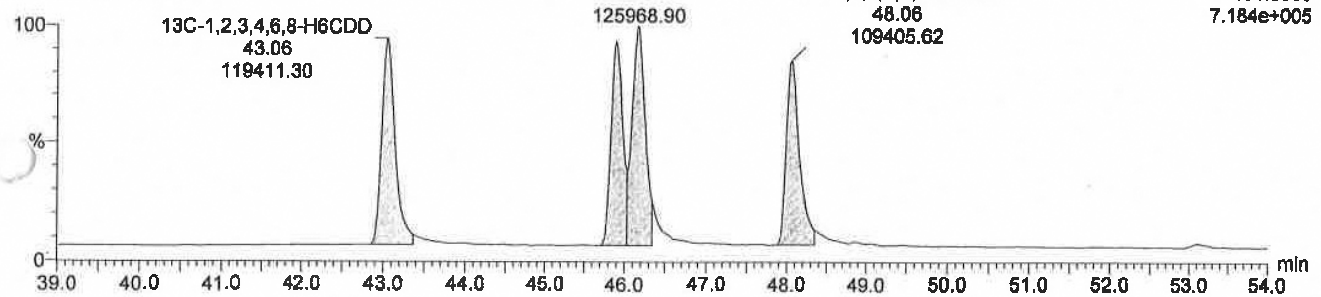
13C-H6CDDs

W-190100036%100608 Smooth(Mn,1x3)
W-190100036%100608

13C-1,2,3,6,7,8-H6CDD

13C-1,2,3,7,8,9-H6CDD

Voltage SIR,EI+
401.8559
7.184e+005



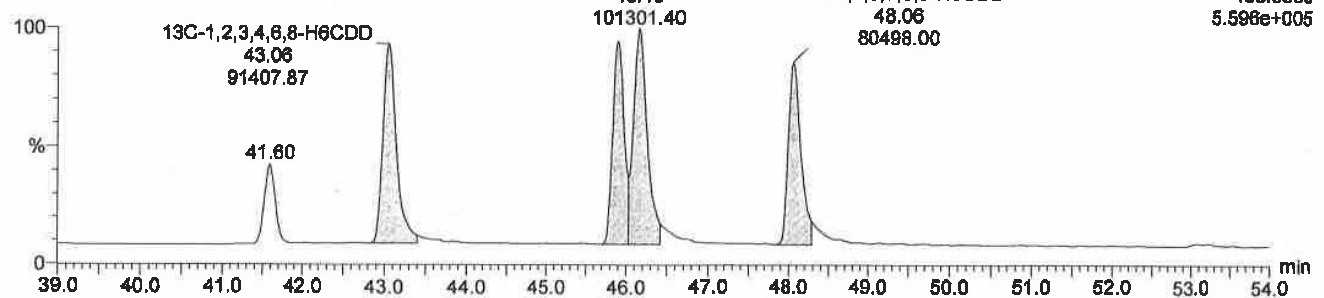
13C-H6CDDs

W-190100036%100608 Smooth(Mn,1x3)
W-190100036%100608

13C-1,2,3,6,7,8-H6CDD

13C-1,2,3,7,8,9-H6CDD

Voltage SIR,EI+
403.8530
5.598e+005



Quantify Sample Report MassLynx 4.1 SCN 803

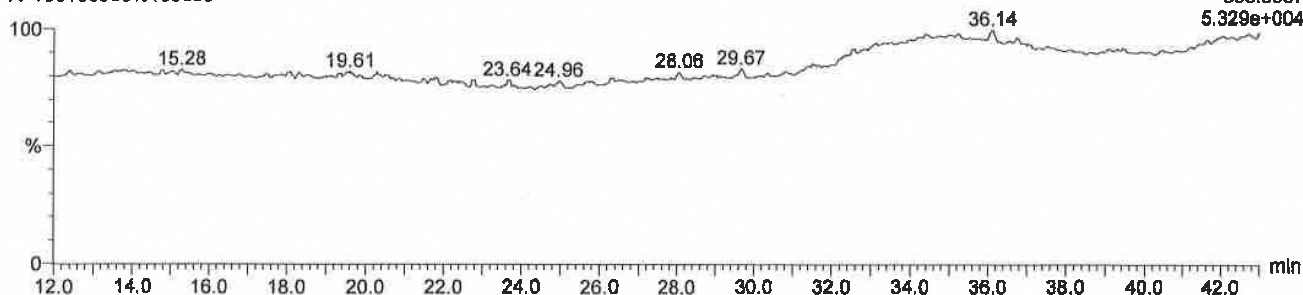
Dataset: C:\MassLynx\ERandS.pro\SP523190129-13.qld

Description: W-190100036%100608, Date: 01-Feb-2019, Time: 11:38:26

T4CDFs

W-190100036%100608 Smooth(Mn,1x3)
W-190100036%100608

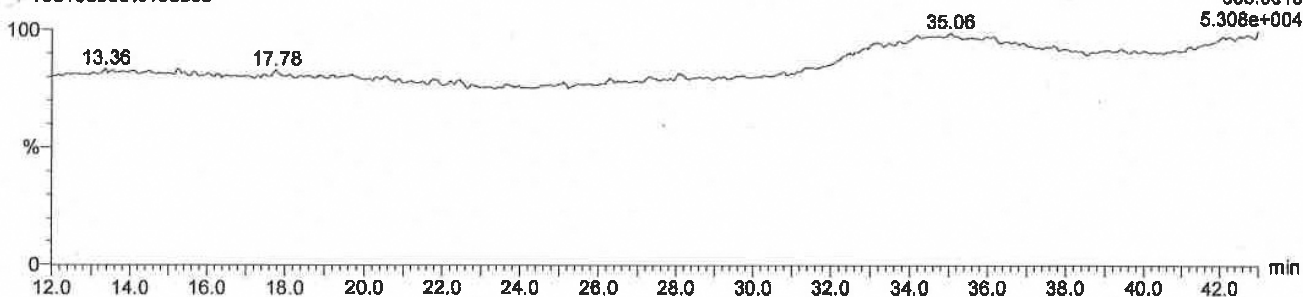
Voltage SIR,EI+
305.8987
5.329e+004



T4CDFs

W-190100036%100608 Smooth(Mn,1x3)
W-190100036%100608

Voltage SIR,EI+
303.9016
5.308e+004

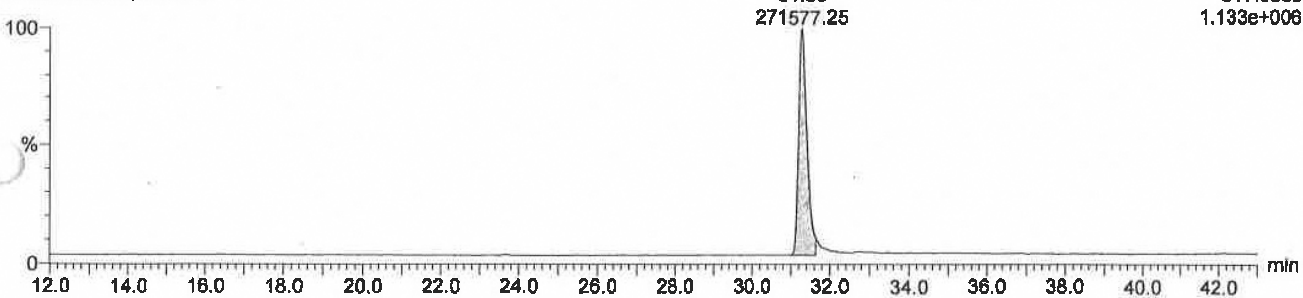


13C-T4CDFs

W-190100036%100608 Smooth(Mn,1x3)
W-190100036%100608

13C-2,3,7,8-TCDF
31.30

Voltage SIR,EI+
317.9389
1.133e+006

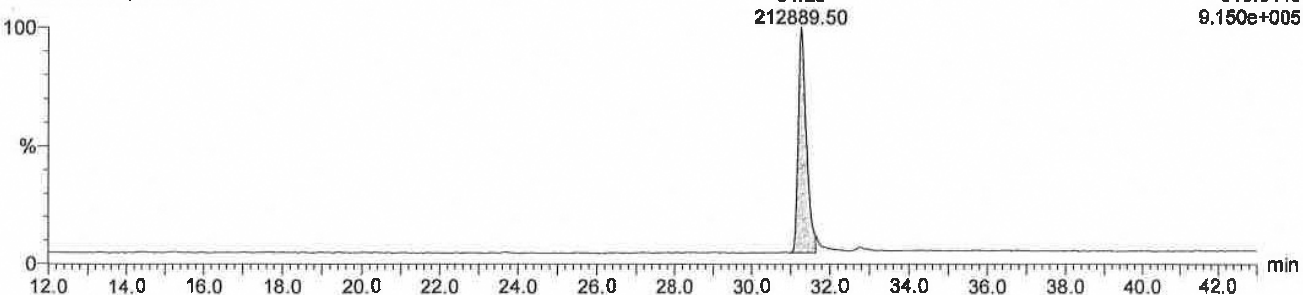


13C-T4CDFs

W-190100036%100608 Smooth(Mn,1x3)
W-190100036%100608

13C-2,3,7,8-TCDF
31.28

Voltage SIR,EI+
315.9419
9.150e+005



Quantify Sample Report MassLynx 4.1 SCN 803

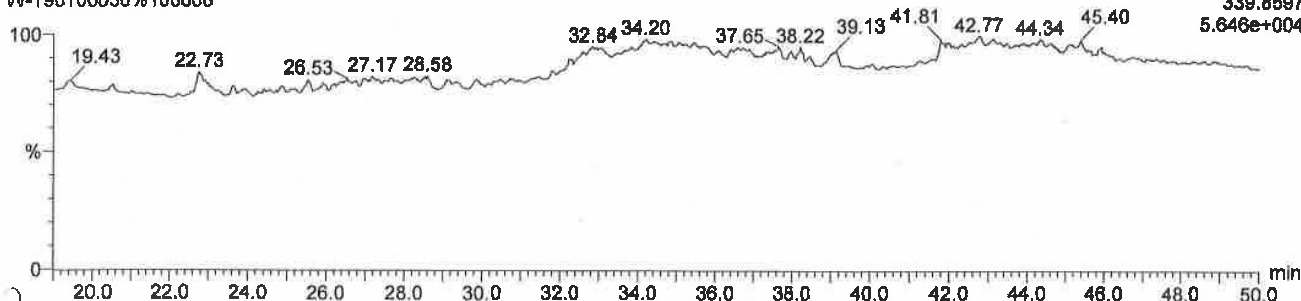
Dataset: C:\MassLynx\ERandS.pro\SP523190129-13.qld

Description: W-190100036%100608, Date: 01-Feb-2019, Time: 11:38:26

P5CDFs

W-190100036%100608 Smooth(Mn,1x3)
W-190100036%100608

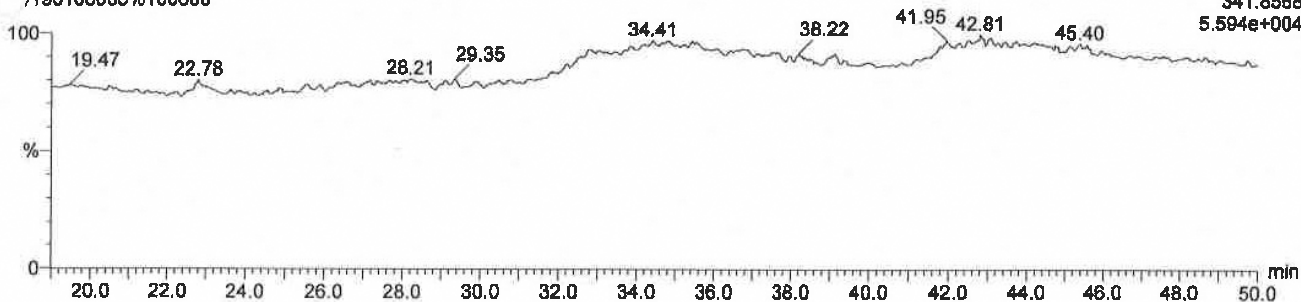
Voltage SIR,EI+
339.8597
5.646e+004



P5CDFs

190100036%100608 Smooth(Mn,1x3)
190100036%100608

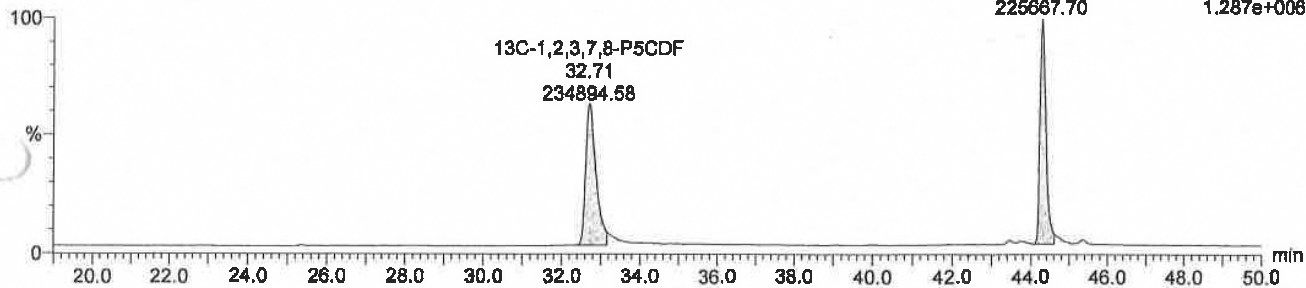
Voltage SIR,EI+
341.8568
5.594e+004



13C-P5CDFs

W-190100036%100608 Smooth(Mn,1x3)
W-190100036%100608

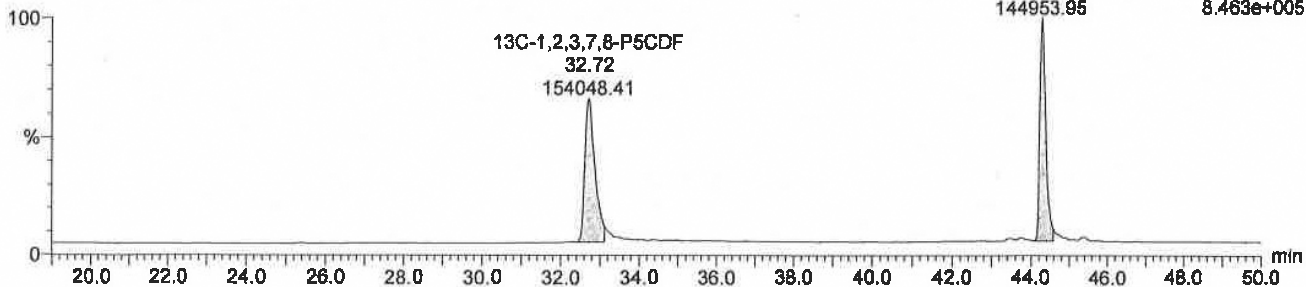
13C-2,3,4,7,8-P5CDF Voltage SIR,EI+
44.31 351.9000
225667.70 1.287e+008



13C-P5CDFs

W-190100036%100608 Smooth(Mn,1x3)
W-190100036%100608

13C-2,3,4,7,8-P5CDF Voltage SIR,EI+
44.31 363.8970
144953.95 8.463e+005



Quantify Sample Report MassLynx 4.1 SCN 803

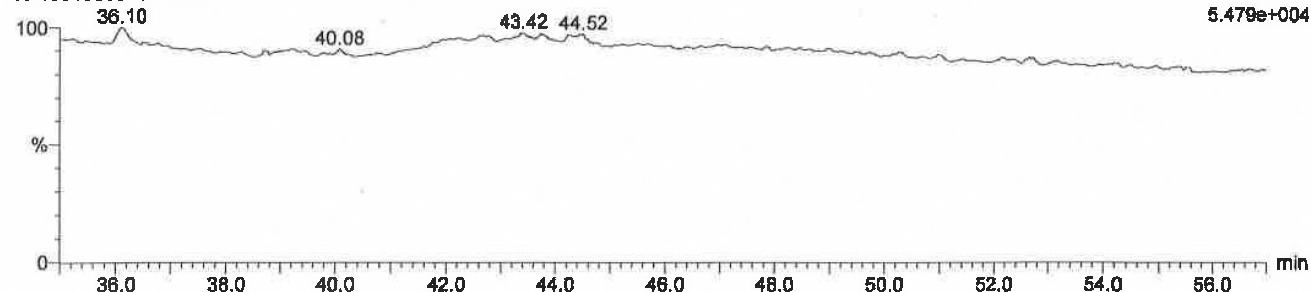
Dataset: C:\MassLynx\ERandS.pro\SP523190129-13.qld

Description: W-190100036%100608, Date: 01-Feb-2019, Time: 11:38:26

H6CDFs

W-190100036%100608 Smooth(Mn,1x3)
W-190100036%100608

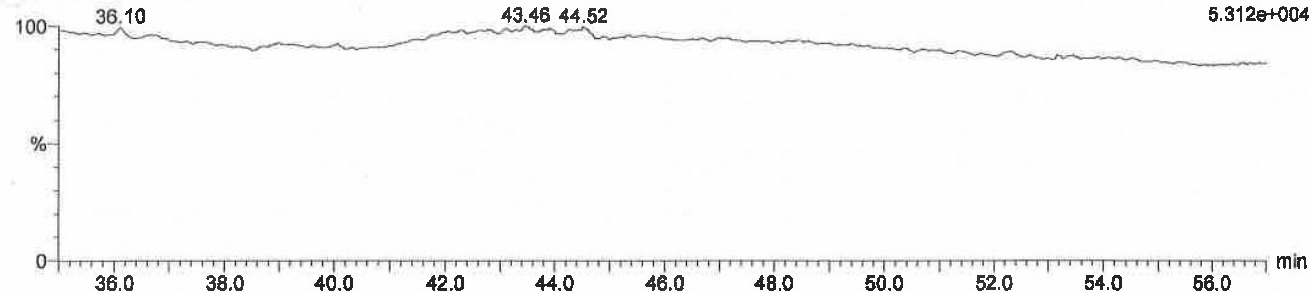
Voltage SIR, EI+
373.8208
5.479e+004



H6CDFs

190100036%100608 Smooth(Mn,1x3)
190100036%100608

Voltage SIR, EI+
375.8178
5.312e+004



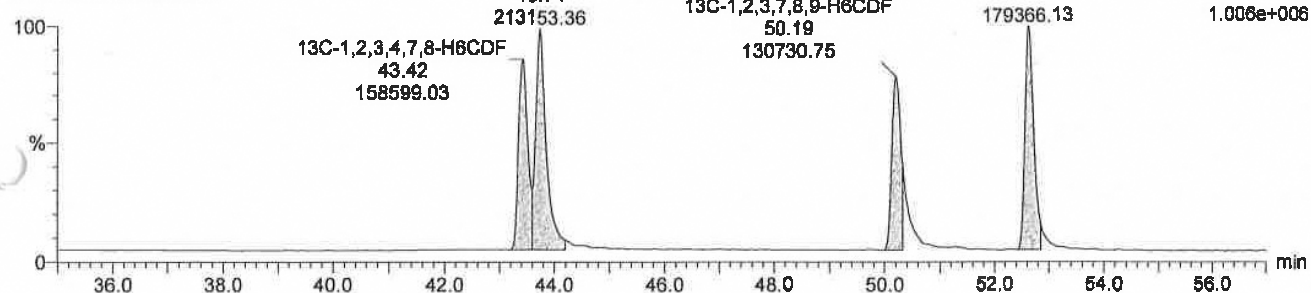
13C-H6CDFs

W-190100036%100608 Smooth(Mn,1x3)
W-190100036%100608

13C-1,2,3,6,7,8-H6CDF

13C-2,3,4,6,7,8-H6CDF

Voltage SIR, EI+
385.8610
1.008e+008



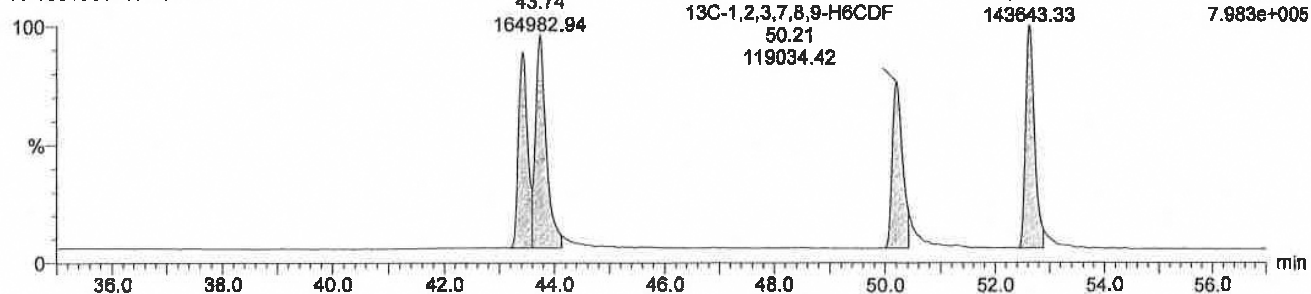
13C-H6CDFs

W-190100036%100608 Smooth(Mn,1x3)
W-190100036%100608

13C-1,2,3,6,7,8-H6CDF

13C-2,3,4,6,7,8-H6CDF

Voltage SIR, EI+
387.8580
7.983e+005



Quantify Sample Summary Report

Sample Name: W-190100036%100608 Sample ID:

#	Name	Trace	RT	Area	Sec.Area	Ion Ratio
1	1 2,3,7,8-T4CDD	321.8936				
2	2 1,2,3,7,8-P5CDD	355.8546				
3	3 1,2,3,4,7,8-H6CDD	389.8157				
4	4 1,2,3,6,7,8-H6CDD	389.8157				
5	5 1,2,3,7,8,9-H6CDD	389.8157				
6	6 2,3,7,8-T4CDF	305.8987				
7	7 1,2,3,7,8-P5CDF	339.8597				
8	8 2,3,4,7,8-P5CDF	339.8597				
9	9 1,2,3,4,7,8-H6CDF	373.8208				
10	10 1,2,3,6,7,8-H6CDF	373.8208				
11	11 1,2,3,7,8,9-H6CDF	373.8208				
12	12 2,3,4,6,7,8-H6CDF	373.8208				
13	13 13C-2,3,7,8-T4CDD	333.9339	22.78	151666.078	121678.133	1.25
14	14 13C-1,3,6,8-T4CDD	333.9339	16.43	222492.797	168481.125	1.32
15	15 13C-1,3,7,8-T4CDD	333.9339	19.39	193695.672	148174.031	1.31
16	16 13C-1,2,3,4-T4CDD	333.9339				
17	17 13C-1,2,3,7,8-P5CDD	367.8949	36.12	158724.438	91428.039	1.74
18	18 13C-1,2,4,7,8-P5CDD	367.8949	31.1	161152.234	103381.781	1.56
19	19 13C-1,2,3,4,7,8-H6CDD	401.8559	45.9	103251.133	78444.617	1.32
20	20 13C-1,2,3,6,7,8-H6CDD	401.8559	46.18	125968.898	101301.398	1.24
21	21 13C-1,2,3,7,8,9-H6CDD	401.8559	48.06	109405.617	80498	1.36
22	22 13C-1,2,3,4,6,8-H6CDD	401.8559	43.06	119411.297	91407.867	1.31
23	23 13C-2,3,7,8-T4CDF	317.9389	31.3	271577.25	212889.5	1.28
24	24 13C-1,2,3,7,8-P5CDF	351.9	32.71	234894.578	154048.408	1.52
25	25 13C-2,3,4,7,8-P5CDF	351.9	44.31	225867.703	144853.953	1.56
26	26 13C-1,2,3,4,7,8-H6CDF	385.861	43.42	158599.031	127293.25	1.25
27	27 13C-1,2,3,6,7,8-H6CDF	385.861	43.74	213153.359	164982.938	1.29
28	28 13C-1,2,3,7,8,9-H6CDF	385.861	50.19	130730.75	119034.422	1.1
29	29 13C-2,3,4,6,7,8-H6CDF	385.861	52.63	179366.125	143643.328	1.25
31	31 T4CDDs	321.8936				
32	32 13C-T4CDDs	333.9339				
33	33 P5CDDs	355.8546				
34	34 13C-P5CDDs	367.8949				
35	35 H6CDDs	389.8157				
36	36 13C-H6CDDs	401.8559				
37	37 T4CDFs	305.8987				
38	38 13C-T4CDFs	317.9389				
39	39 P5CDFs	339.8597				
40	40 13C-P5CDFs	351.9				
41	41 H6CDFs	373.8208				
42	42 13C-H6CDFs	385.861				

ダイオキシン類測定結果(23)

Quantify Totals Report

Sample Name: W-190100036%100608 Sample ID:

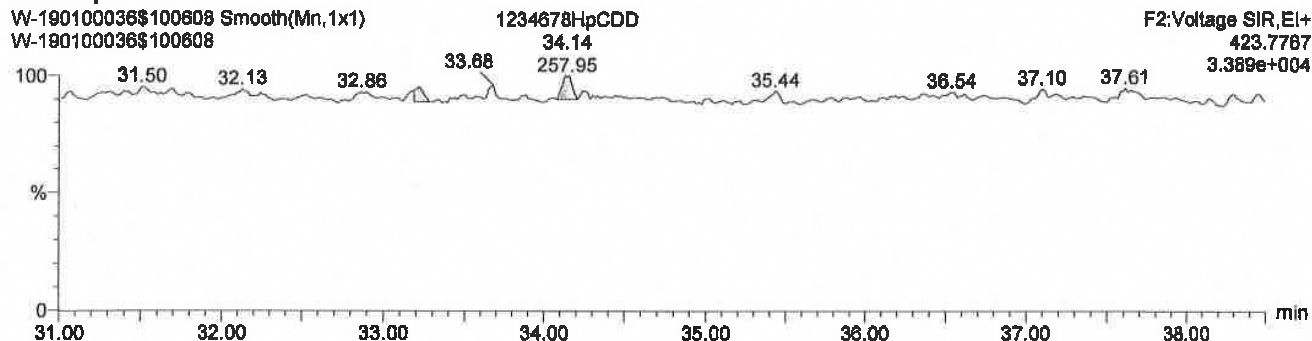
#	Name	Trace	RT	Area	Sec.Area	Ion Ratio	
1	31 T4CDDs	321.8936	16.46		588.972	398.688	1.48
#	Name	Trace	RT	Area	Sec.Area	Ion Ratio	
3	14 13C-1,3,6,8-T4CDD	333.9339	16.43	222492.797	168481.125	1.32	
2	15 13C-1,3,7,8-T4CDD	333.9339	19.39	183695.672	148174.031	1.31	
1	13 13C-2,3,7,8-T4CDD	333.9339	22.78	151666.078	121678.133	1.25	
#	Name	Trace	RT	Area	Sec.Area	Ion Ratio	
Row 1							
#	Name	Trace	RT	Area	Sec.Area	Ion Ratio	
2	18 13C-1,2,4,7,8-P5CDD	367.8949	31.1	161152.234	103381.781	1.56	
1	17 13C-1,2,3,7,8-P5CDD	367.8949	36.12	158724.438	91428.039	1.74	
#	Name	Trace	RT	Area	Sec.Area	Ion Ratio	
1	35 H6CDDs	389.8157	43.12		449.269	339.992	1.32
#	Name	Trace	RT	Area	Sec.Area	Ion Ratio	
4	22 13C-1,2,3,4,6,8-H6CDD	401.8559	43.06	119411.297	91407.867	1.31	
3	19 13C-1,2,3,4,7,8-H6CDD	401.8559	45.9	103251.133	78444.617	1.32	
2	20 13C-1,2,3,6,7,8-H6CDD	401.8559	46.18	125968.898	101301.398	1.24	
1	21 13C-1,2,3,7,8,9-H6CDD	401.8559	48.06	109405.617	80498	1.36	
#	Name	Trace	RT	Area	Sec.Area	Ion Ratio	
Row 1							
#	Name	Trace	RT	Area	Sec.Area	Ion Ratio	
1	23 13C-2,3,7,8-TGDF	317.9389	31.3	271577.25	212889.5	1.28	
#	Name	Trace	RT	Area	Sec.Area	Ion Ratio	
Row 1							
#	Name	Trace	RT	Area	Sec.Area	Ion Ratio	
2	24 13C-1,2,3,7,8-P5CDF	351.9	32.71	234894.578	154048.406	1.52	
1	25 13C-2,3,4,7,8-P5CDF	351.9	44.31	225867.703	144953.953	1.56	
#	Name	Trace	RT	Area	Sec.Area	Ion Ratio	
Row 1							
#	Name	Trace	RT	Area	Sec.Area	Ion Ratio	
4	26 13C-1,2,3,4,7,8-H6CDF	385.861	43.42	158599.031	127293.25	1.25	
3	27 13C-1,2,3,6,7,8-H6CDF	385.861	43.74	213153.359	164982.938	1.29	
2	28 13C-1,2,3,7,8,9-H6CDF	385.861	50.19	130730.75	119034.422	1.1	
1	29 13C-2,3,4,6,7,8-H6CDF	385.861	52.63	179366.125	143643.328	1.25	

Quantify Sample Report MassLynx 4.1 SCN 803

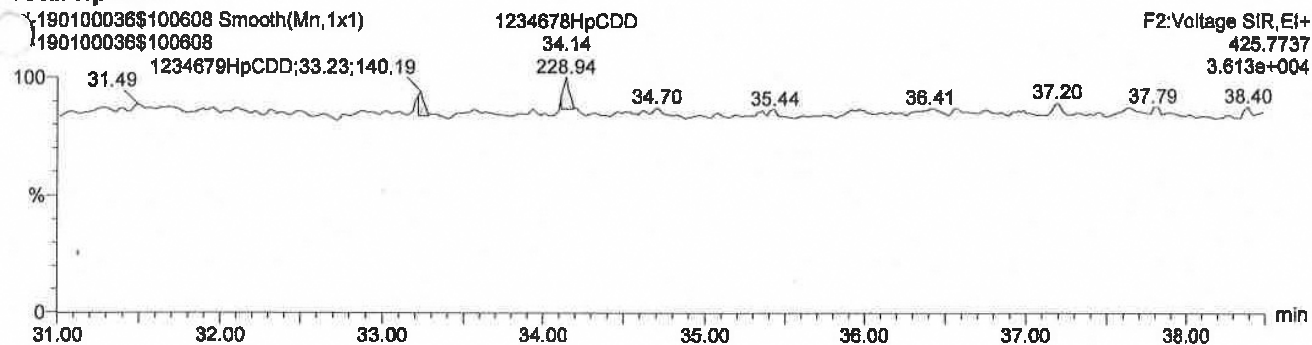
Dataset: C:\MassLynx\ERandS.PRO\RH678576190129-17.qld

Description: W-190100036\$100608, Date: 01-Feb-2019, Time: 15:50:43

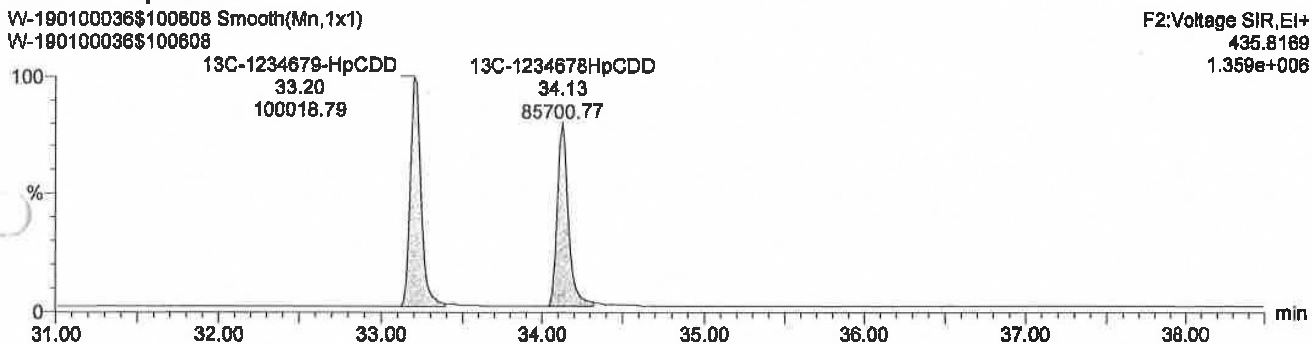
Total HpCDDs



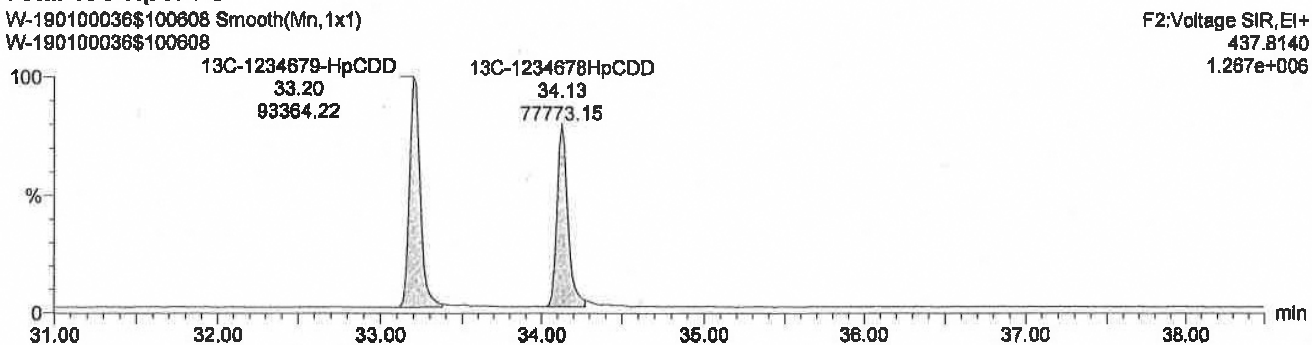
Total HpCDDs



Total 13C-HpCDDs



Total 13C-HpCDDs



Quantify Sample Report

MassLynx 4.1 SCN 803

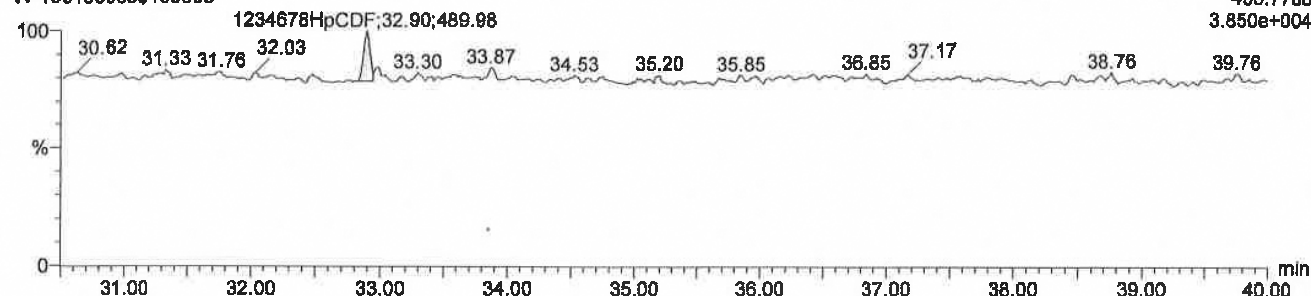
Dataset: C:\MassLynx\ERandS.PRO\RH678576190129-17.qld

Description: W-190100036\$100608, Date: 01-Feb-2019, Time: 15:50:43

Total HpCDFs

W-190100036\$100608 Smooth(Mn,1x1)
W-190100036\$100608

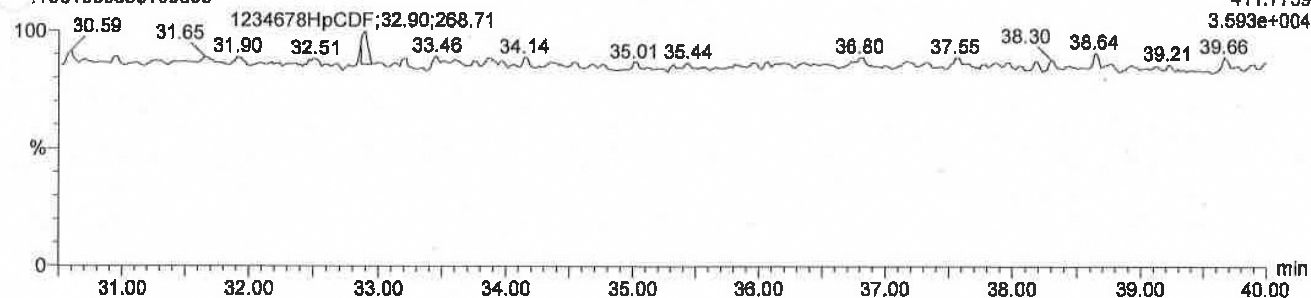
F2:Voltage SIR,EI+
409.7788
3.850e+004



Total HpCDFs

W-190100036\$100608 Smooth(Mn,1x1)
W-190100036\$100608

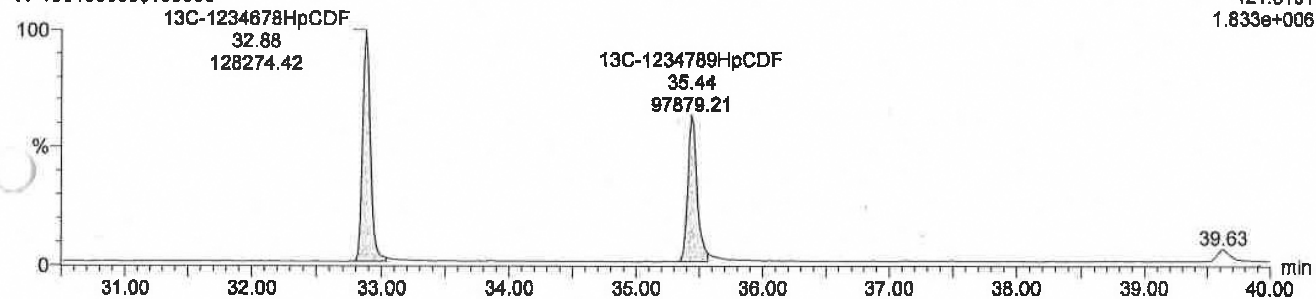
F2:Voltage SIR,EI+
411.7759
3.593e+004



Total 13C-HpCDFs

W-190100036\$100608 Smooth(Mn,1x1)
W-190100036\$100608

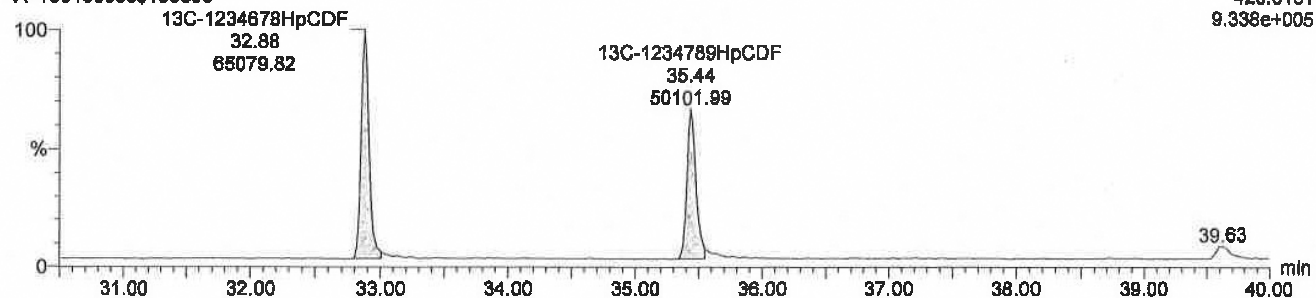
F2:Voltage SIR,EI+
421.8191
1.833e+006



Total 13C-HpCDFs

W-190100036\$100608 Smooth(Mn,1x1)
W-190100036\$100608

F2:Voltage SIR,EI+
423.8161
9.338e+005



Quantify Sample Report MassLynx 4.1 SCN 803

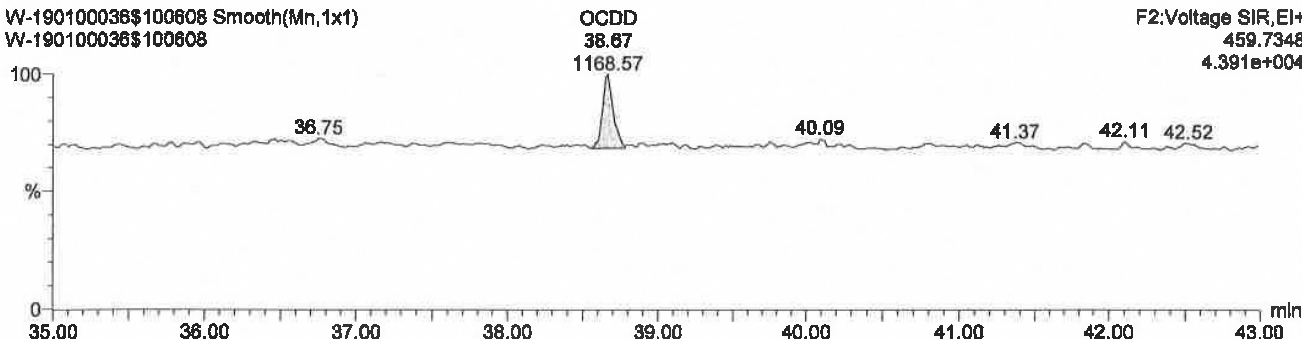
Dataset: C:\MassLynx\ERandS.PRO\RH678576190129-17.qld

Description: W-190100036\$100608, Date: 01-Feb-2019, Time: 15:50:43

Total OCDD

W-190100036\$100608 Smooth(Mn,1x1)
W-190100036\$100608

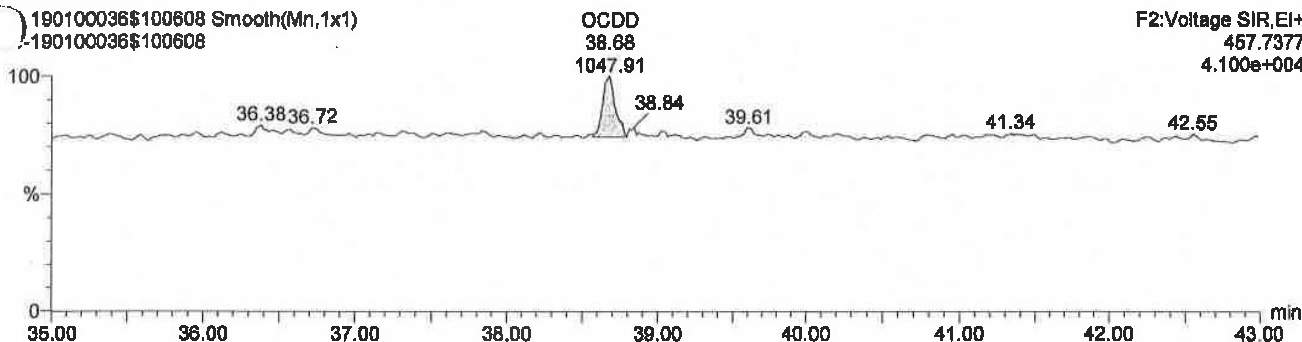
F2:Voltage SIR,EI+
459.7348
4.391e+004



Total OCDD

190100036\$100608 Smooth(Mn,1x1)
190100036\$100608

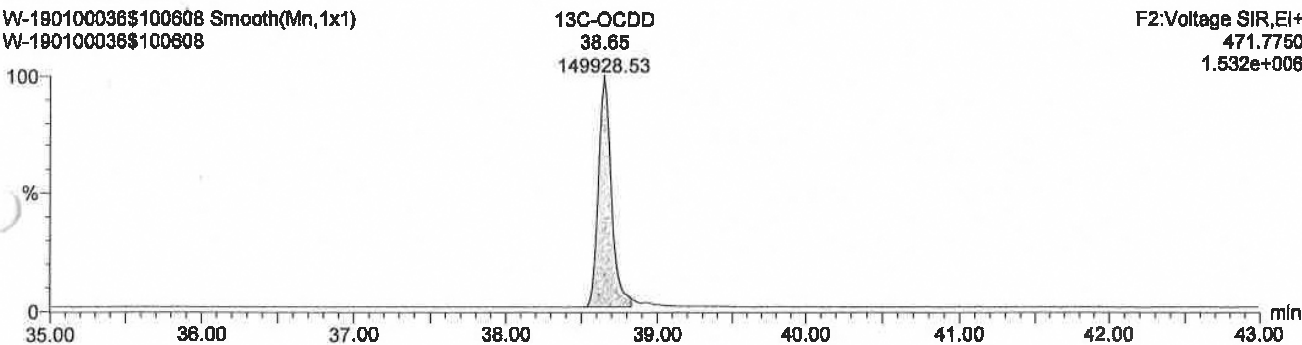
F2:Voltage SIR,EI+
457.7377
4.100e+004



Total 13C-OCDD

W-190100036\$100608 Smooth(Mn,1x1)
W-190100036\$100608

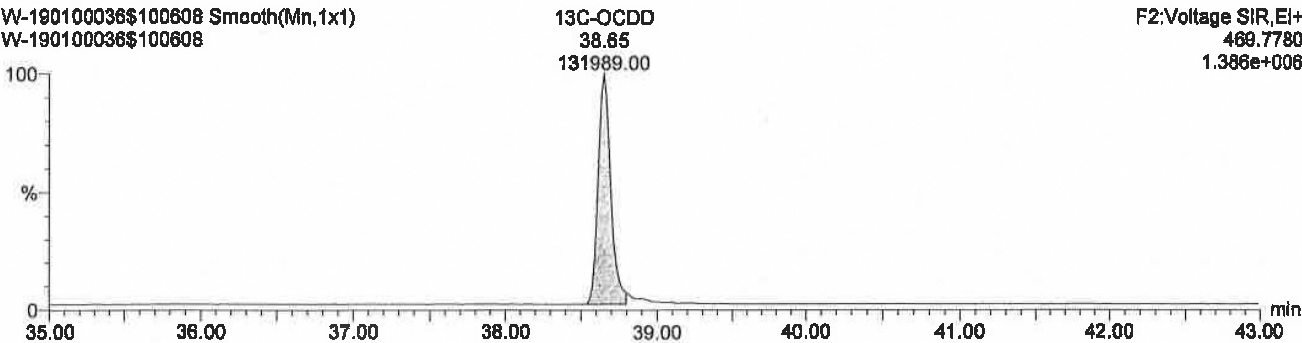
F2:Voltage SIR,EI+
471.7750
1.532e+006



Total 13C-OCDD

W-190100036\$100608 Smooth(Mn,1x1)
W-190100036\$100608

F2:Voltage SIR,EI+
469.7780
1.386e+006



Quantify Sample Report MassLynx 4.1 SCN 803

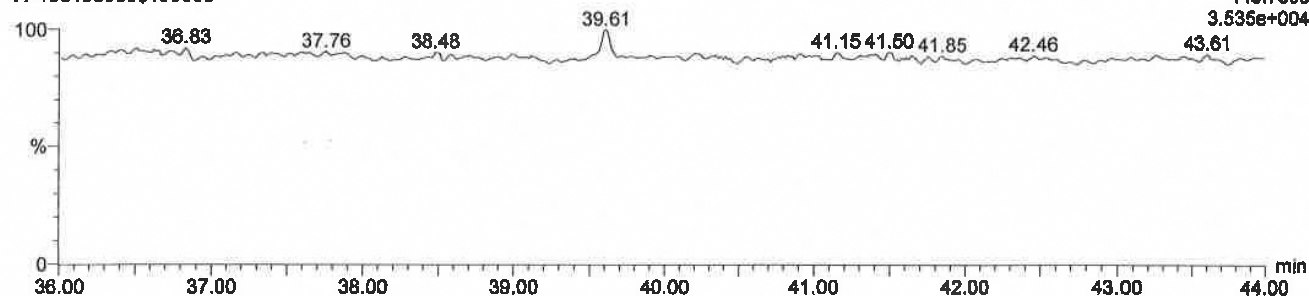
Dataset: C:\MassLynx\ERandS.PRO\RH678576190129-17.qld

Description: W-190100036\$100608, Date: 01-Feb-2019, Time: 16:50:43

Total OCDF

W-190100036\$100608 Smooth(Mn,1x1)
W-190100036\$100608

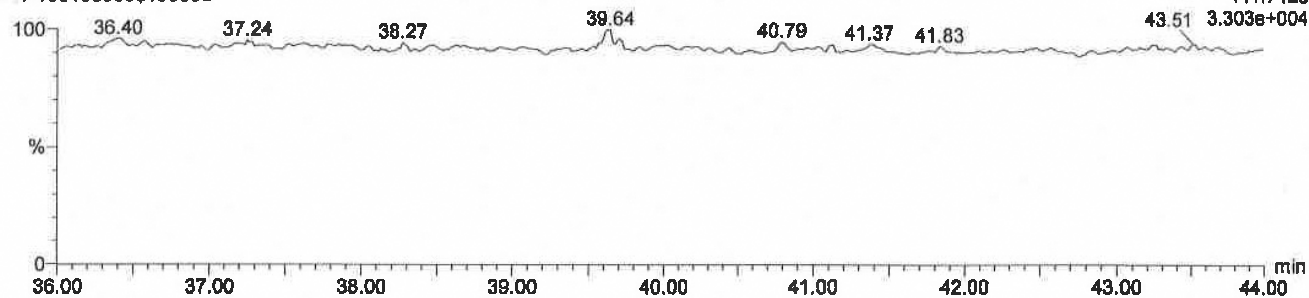
F2:Voltage SIR,EI+
443.7398
3.536e+004



Total OCDF

190100036\$100608 Smooth(Mn,1x1)
190100036\$100608

F2:Voltage SIR,EI+
441.7428
3.303e+004

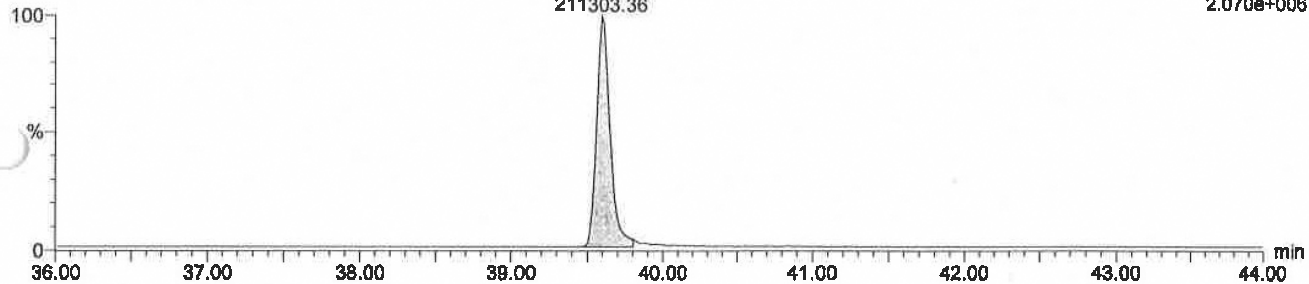


Total 13C-OCDF

W-190100036\$100608 Smooth(Mn,1x1)
W-190100036\$100608

13C-OCDF
39.60
211303.36

F2:Voltage SIR,EI+
455.7801
2.070e+006

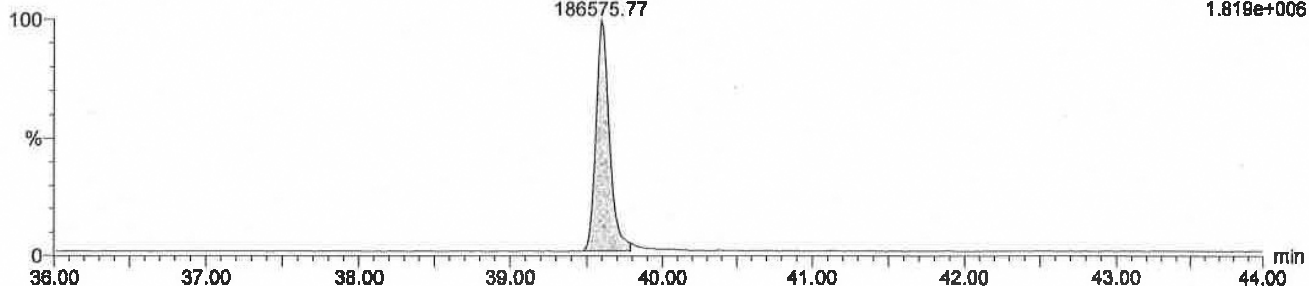


Total 13C-OCDF

W-190100036\$100608 Smooth(Mn,1x1)
W-190100036\$100608

13C-OCDF
39.60
186575.77

F2:Voltage SIR,EI+
453.7830
1.819e+006



Quantify Sample Summary Report

775152.816

Sample Name: W-190100036@100608 Sample ID:

#	Name	Trace	RT	Area	Sec.Area	Ion Ratio
3	3 1234678HpCDD	423.7767	34.14	257.948	228.935	1.13
4	4 1234679HpCDD	423.7767	33.22	131.248	140.19	0.94
5	5 1234678HpCDF	409.7788	32.9	489.978	268.709	1.82
6	6 1234789HpCDF	409.7788				
7	7 1234679HpCDF	409.7788				
8	8 1234689HpCDF	409.7788				
9	9 OCDD	459.7348	38.67	1168.566	1047.911	1.12
10	10 OCDF	443.7398				
13	13 13C-1234678HpCDD	435.8169	34.13	85700.766	77773.148	1.10
14	14 13C-1234678HpCDF	421.8191	32.88	128274.422	65079.82	1.97
15	15 13C-1234789HpCDF	421.8191	35.44	97879.211	50101.988	1.95
16	16 13C-OCDD	471.775	38.65	149928.531	131989	1.14
17	17 13C-OCDF	455.7801	39.6	211303.359	186575.766	1.13
18	18 13C-1234679-HpCDD	435.8169	33.2	100018.789	93364.219	1.07

Quantify Sample Report MassLynx 4.1 SCN 803

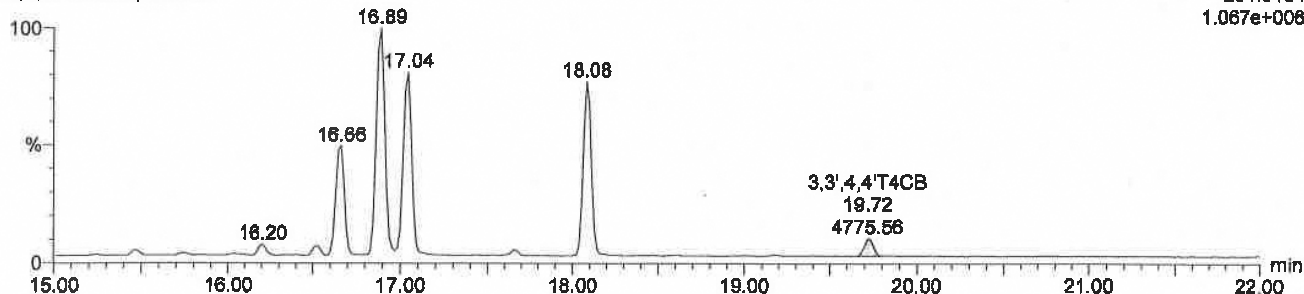
Dataset: C:\MassLynx\ERandS.PRO\RH5P576190129-17.qld

Description: W-190100036\$100608, Date: 01-Feb-2019, Time: 15:50:43

T4CBs

W-190100036\$100608 Smooth(Mn,1x1)
W-190100036\$100608

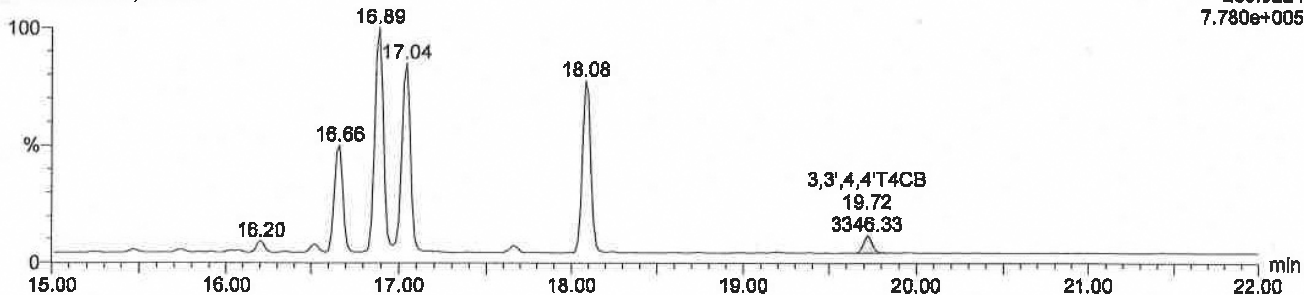
F1:Voltage SIR,EI+
291.9194
1.067e+008



T4CBs

190100036\$100608 Smooth(Mn,1x1)
-190100036\$100608

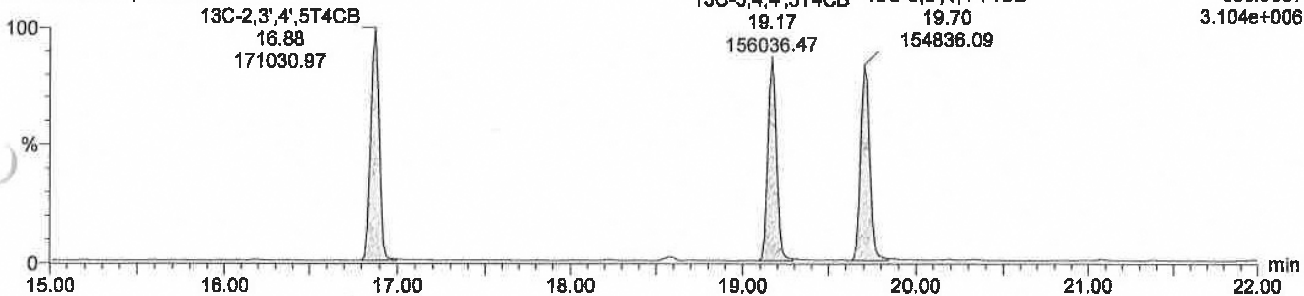
F1:Voltage SIR,EI+
289.9224
7.780e+005



13C-T4CBs

W-190100036\$100608 Smooth(Mn,1x1)
W-190100036\$100608

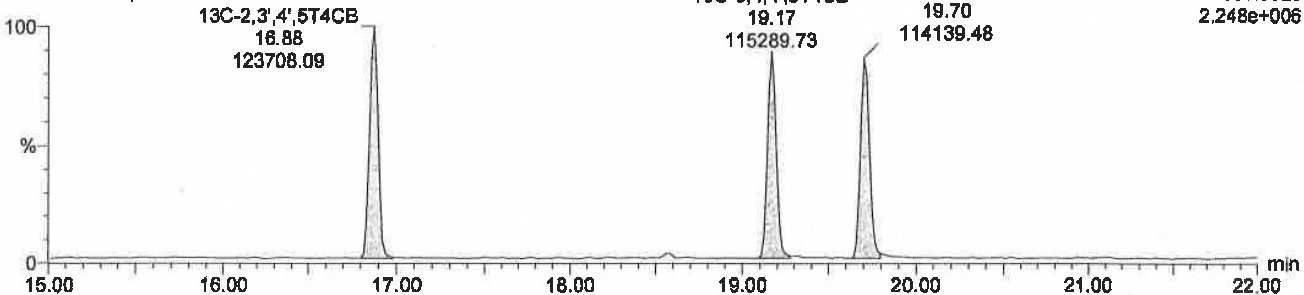
F1:Voltage SIR,EI+
303.9597
3.104e+006



13C-T4CBs

W-190100036\$100608 Smooth(Mn,1x1)
W-190100036\$100608

F1:Voltage SIR,EI+
301.9626
2.248e+006



Quantify Sample Report MassLynx 4.1 SCN 803

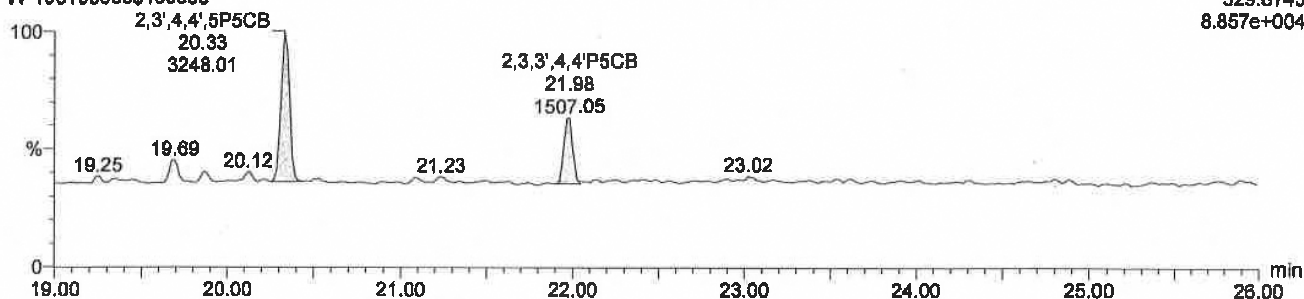
Dataset: C:\MassLynx\ERandS.PRO\RH5P576190129-17.qld

Description: W-190100036\$100608, Date: 01-Feb-2019, Time: 15:50:43

P5CBs

W-190100036\$100608 Smooth(Mn,1x1)
W-190100036\$100608

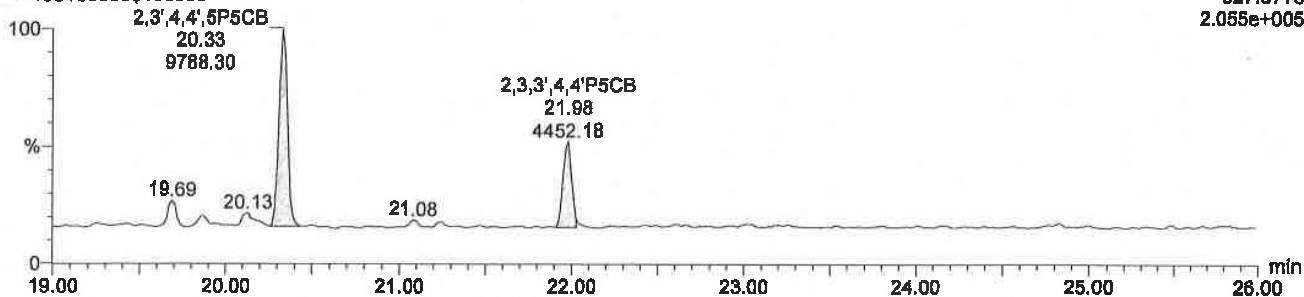
F1:Voltage SIR,EI+
329.8745
8.857e+004



P5CBs

W-190100036\$100608 Smooth(Mn,1x1)
W-190100036\$100608

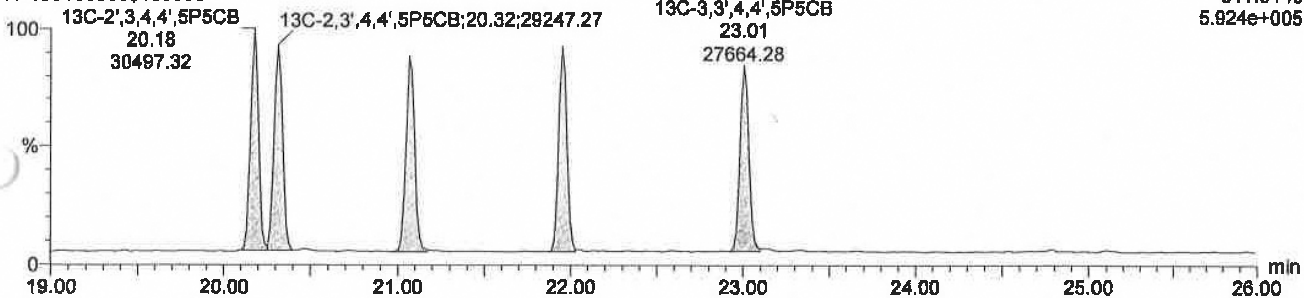
F1:Voltage SIR,EI+
327.8775
2.055e+005



13C-P5CBs

W-190100036\$100608 Smooth(Mn,1x1)
W-190100036\$100608

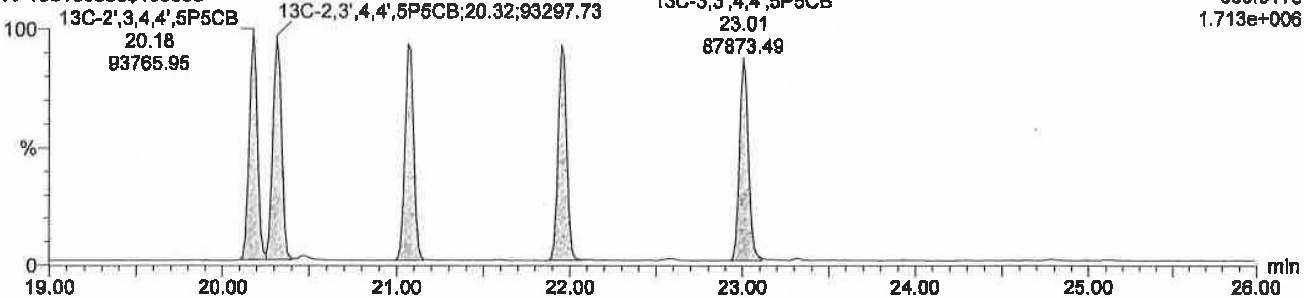
F1:Voltage SIR,EI+
341.9148
5.924e+005



13C-P5CBs

W-190100036\$100608 Smooth(Mn,1x1)
W-190100036\$100608

F1:Voltage SIR,EI+
339.9178
1.713e+006

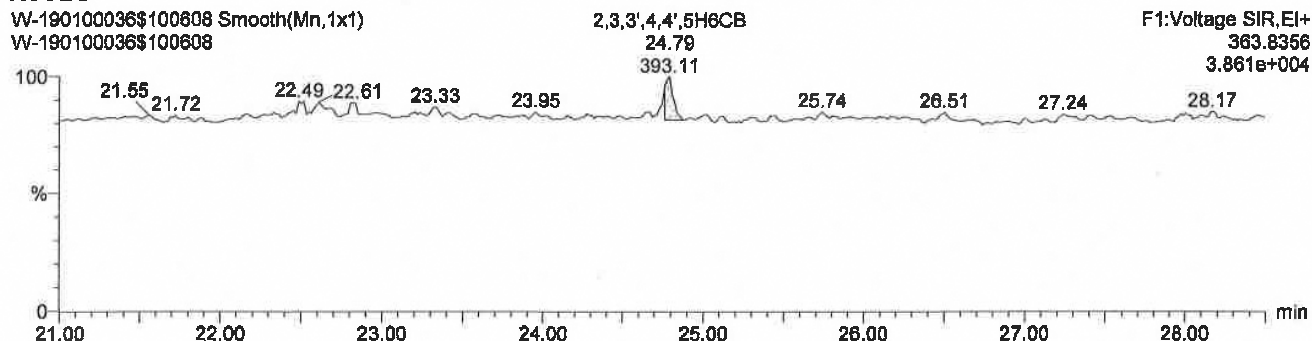


Quantify Sample Report MassLynx 4.1 SCN 803

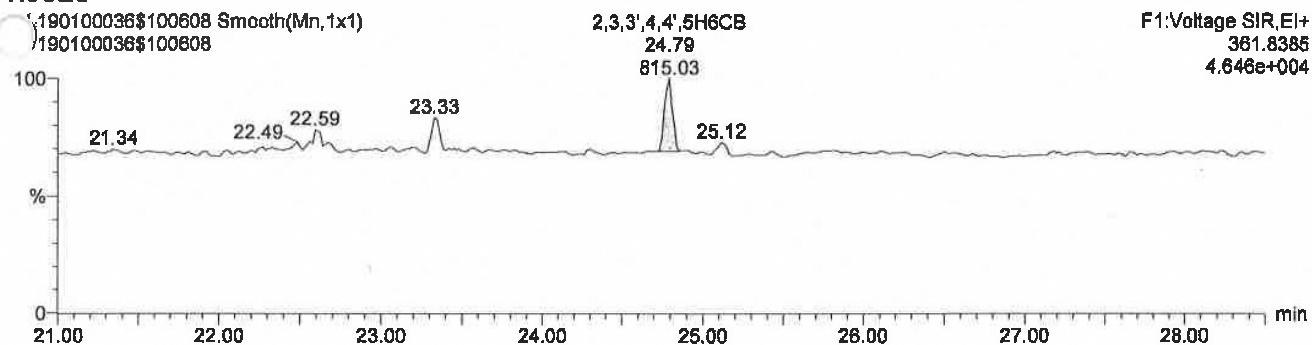
Dataset: C:\MassLynx\ERandS.PRO\RH5P576190129-17.qld

Description: W-190100036\$100608, Date: 01-Feb-2019, Time: 15:50:43

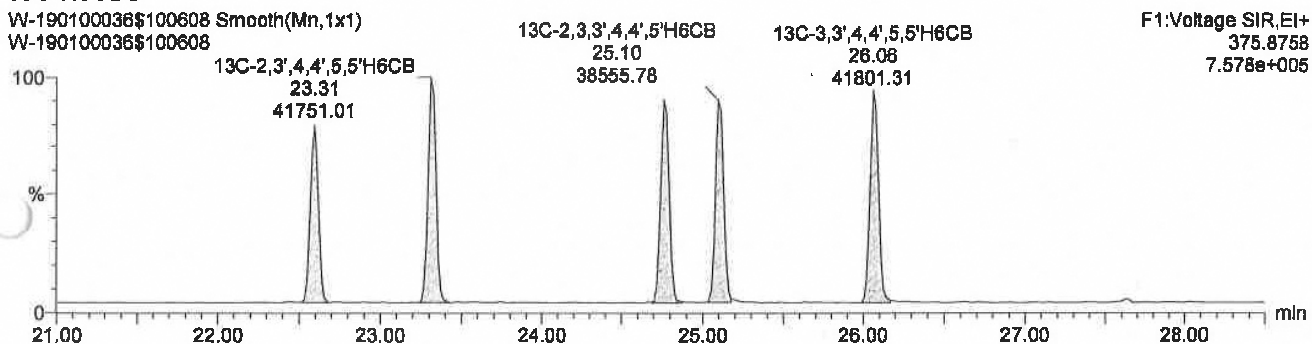
H6CBs



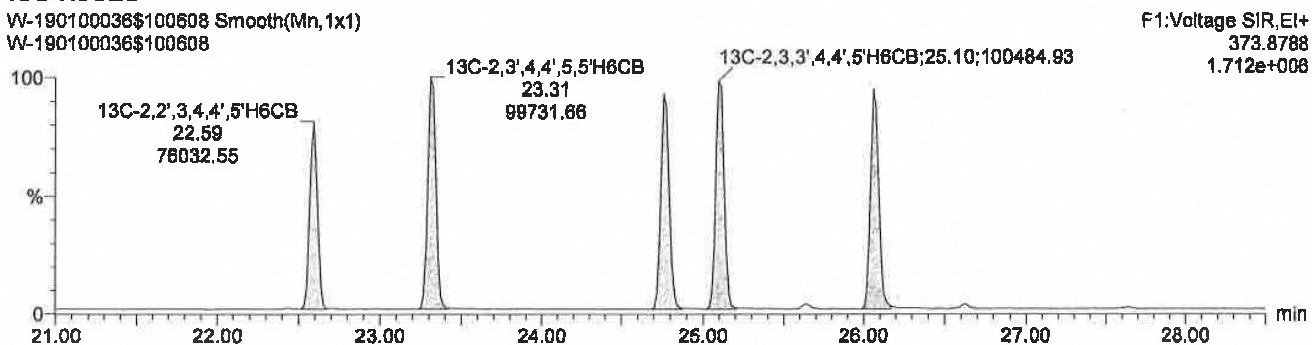
H6CBs



13C-H6CBs



13C-H6CBs



Quantify Sample Report MassLynx 4.1 SCN 803

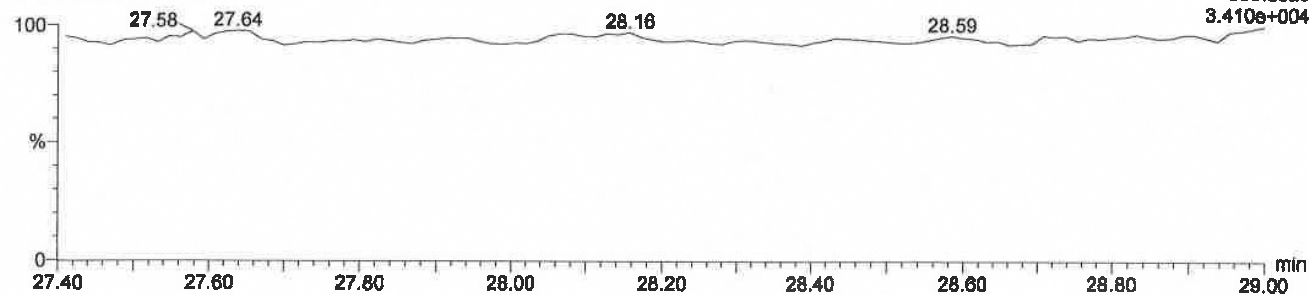
Dataset: C:\MassLynx\ERandS.PRO\RH5P576190129-17.qld

Description: W-190100036\$100608, Date: 01-Feb-2019, Time: 15:50:43

H7CBs

W-190100036\$100608 Smooth(Mn,1x1)
W-190100036\$100608

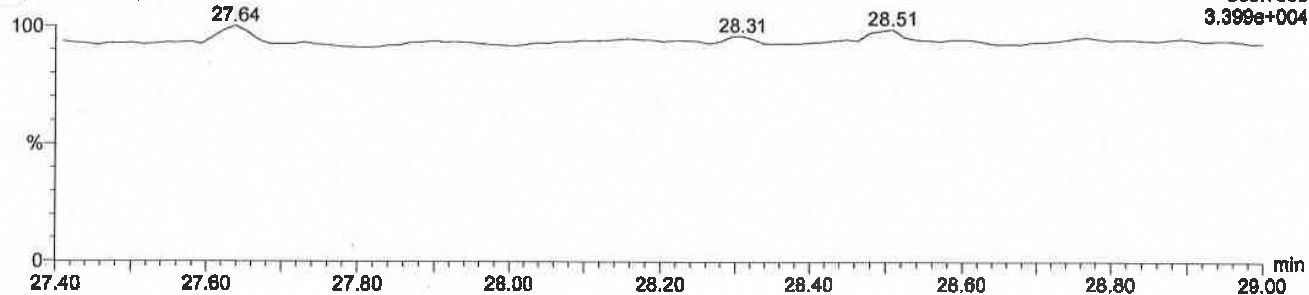
F1:Voltage SIR,EI+
393.8025
3.410e+004



H7CBs

190100036\$100608 Smooth(Mn,1x1)
190100036\$100608

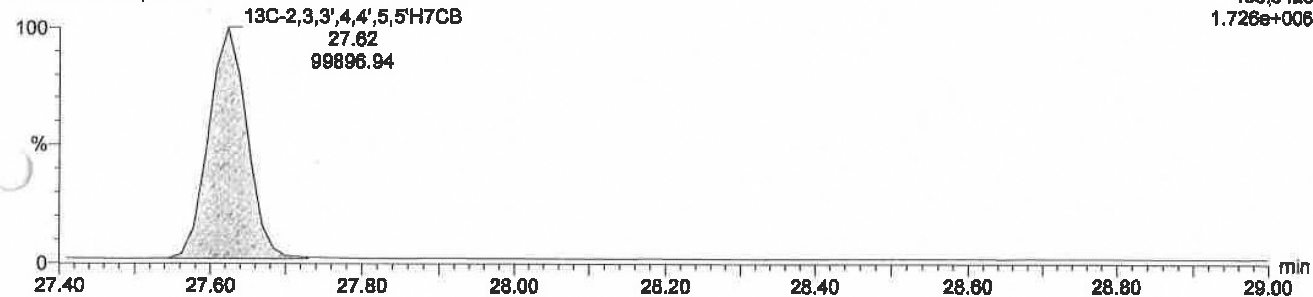
F1:Voltage SIR,EI+
395.7995
3.399e+004



13C-H7CBs

W-190100036\$100608 Smooth(Mn,1x1)
W-190100036\$100608

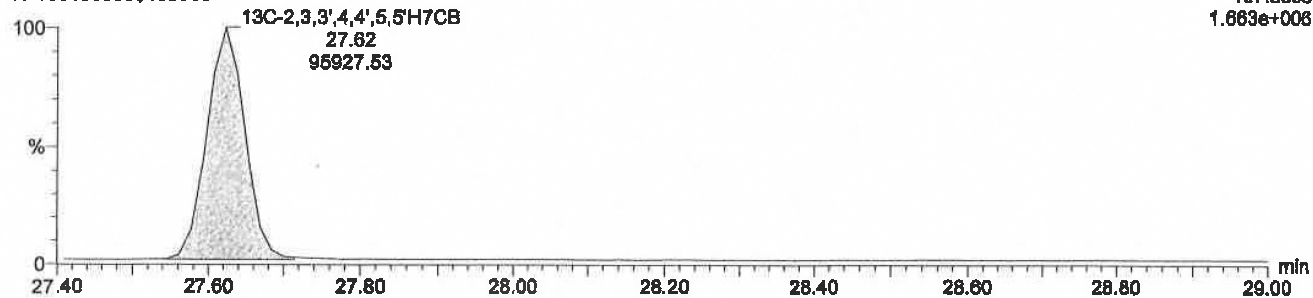
F1:Voltage SIR,EI+
405.8428
1.726e+006



13C-H7CBs

W-190100036\$100608 Smooth(Mn,1x1)
W-190100036\$100608

F1:Voltage SIR,EI+
407.8398
1.663e+006



Quantify Sample Summary Report

931973.958

Sample Name: W-190100036\$100608 Sample ID:

#	Name	Trace	RT	Area	Sec.Area	Ion Ratio
1	1 3,4,4',5T4CB	291.9194				
2	2 3,3',4,4'T4CB	291.9194	19.72	4775.56	3346.33	1.43
3	3 13C-3,4,4',5T4CB	303.9597	19.17	156036.469	115289.727	1.35
4	4 13C-3,3',4,4'T4CB	303.9597	19.7	154836.094	114139.477	1.36
5	5 13C-2,3',4',5T4CB	303.9597	16.88	171030.969	123708.086	1.38
6	6 2',3,4,4',5P5CB	329.8745				
7	7 2,3',4,4',5P5CB	329.8745	20.33	3248.01	9788.295	0.33
8	8 2,3,4,4',5P5CB	329.8745				
9	9 2,3,3',4,4'P5CB	329.8745	21.98	1507.05	4452.179	0.34
10	10 3,3',4,4',5P5CB	329.8745				
11	11 13C-2',3,4,4',5P5CB	341.9148	20.18	30497.32	93765.945	0.33
12	12 13C-2,3',4,4',5P5CB	341.9148	20.32	29247.268	93297.727	0.31
13	13 13C-2,3,4,4',5P5CB	341.9148	21.06	29253.52	93434.813	0.31
14	14 13C-2,3,3',4,4'P5CB	341.9148	21.95	29236.523	92882.586	0.31
15	15 13C-3,3',4,4',5P5CB	341.9148	23.01	27664.279	87873.492	0.31
16	16 2,3',4,4',5,5'H6CB	363.8356				
17	17 2,3,3',4,4',5H6CB	363.8356	24.79	393.11	815.035	0.48
18	18 2,3,3',4,4',5'H6CB	363.8356				
19	19 3,3',4,4',5,5'H6CB	363.8356				
20	20 13C-2,3',4,4',5,5'H6CB	375.8758	23.31	41751.008	99731.664	0.42
21	21 13C-2,3,3',4,4',5H6CB	375.8758	24.76	39223.473	93038.633	0.42
22	22 13C-2,3,3',4,4',5'H6CB	375.8758	25.1	36555.781	100484.93	0.38
23	23 13C-3,3',4,4',5,5'H6CB	375.8758	26.06	41801.309	96935.914	0.43
24	24 13C-2,2',3,4,4',5'H6CB	375.8758	22.59	33019.277	76032.555	0.43
27	27 2,3,3',4,4',5,5'H7CB	393.8025				
30	30 13C-2,3,3',4,4',5,5'H7CB	405.8428	27.62	99896.938	95927.531	1.04