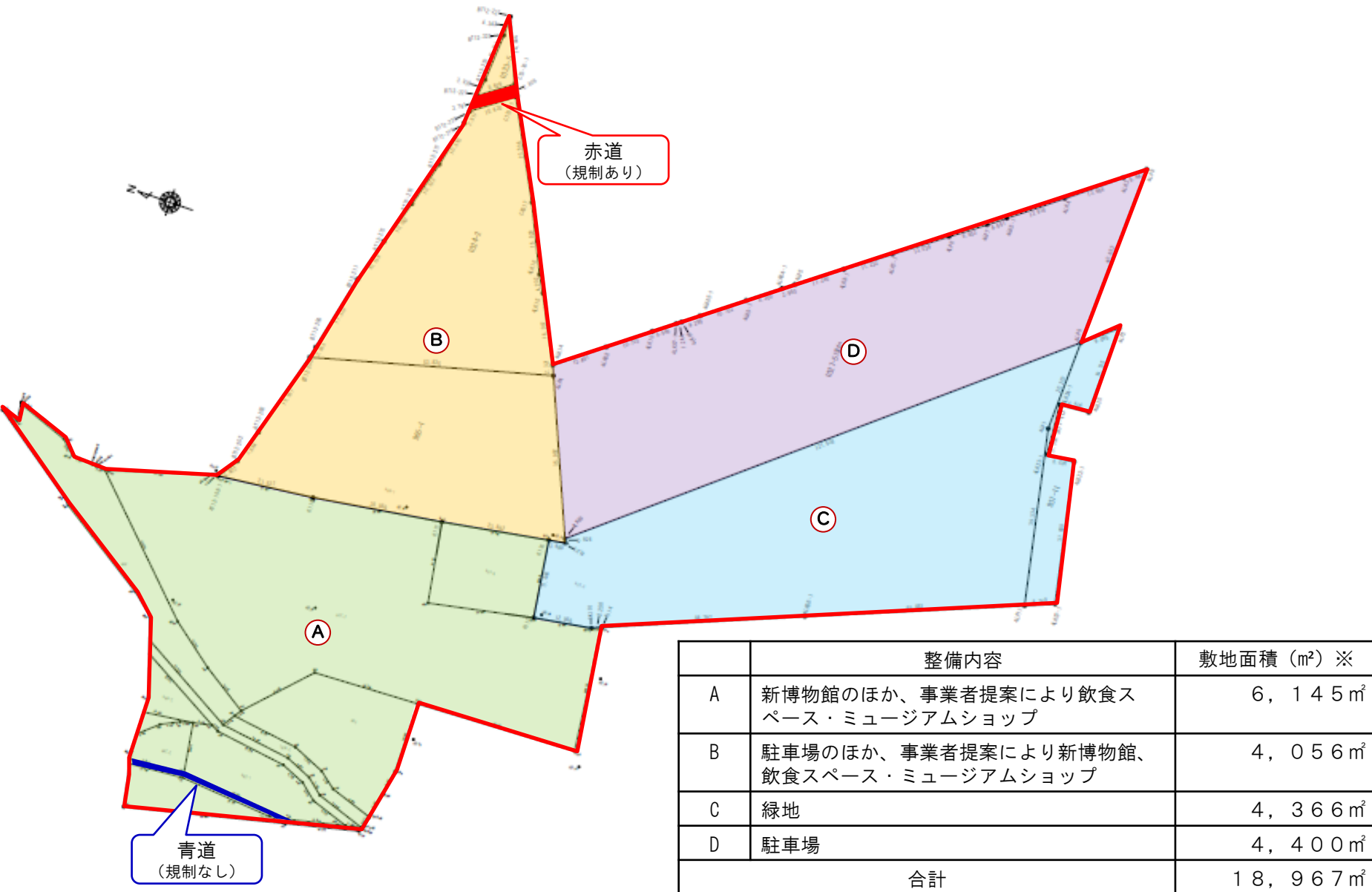
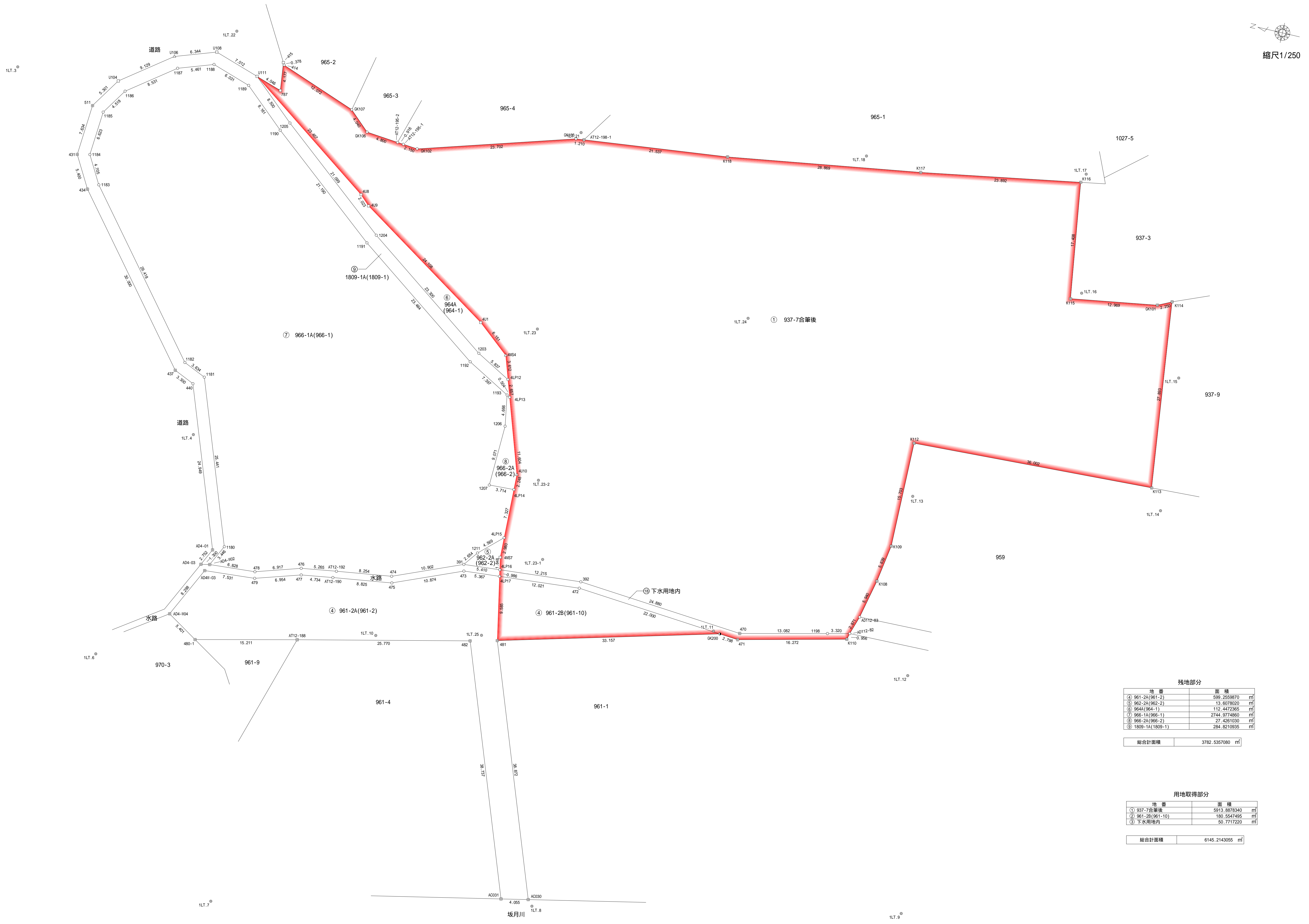
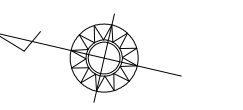


# ■新博物館等 事業用地







残地部分

地番	面積	単位
④ 961-2A(961-2)	599.255870	m <sup>2</sup>
⑤ 962-2A(962-2)	13.6078020	m <sup>2</sup>
⑥ 964A(964-1)	112.4472955	m <sup>2</sup>
⑦ 966-1A(966-1)	2744.9774860	m <sup>2</sup>
⑧ 966-2A(966-2)	27.4261030	m <sup>2</sup>
⑨ 1809-1A(1809-1)	284.8210935	m <sup>2</sup>

総合計面積 3782.5357080 m<sup>2</sup>

用地取得部分

地番	面積	単位
① 937-7台置後	5913.8878340	m <sup>2</sup>
② 961-2B(961-10)	180.5547485	m <sup>2</sup>
③ 下水用地内	50.7717220	m <sup>2</sup>

総合計面積 6145.2143055 m<sup>2</sup>

求積表

Table with columns: 地番, NO, X\_n, Y\_n, Y\_{n+1}, Y\_{n-1}, X\_n \* (Y\_{n+1} - Y\_{n-1}). Includes sub-section ① 937-7合筆後 and sub-section ② 961-10.

Table with columns: 地番, NO, X\_n, Y\_n, Y\_{n+1}, Y\_{n-1}, X\_n \* (Y\_{n+1} - Y\_{n-1}). Includes sub-section ③ 下水用地内 and sub-section ④ 961-2A(961-2).

Table with columns: 地番, NO, X\_n, Y\_n, Y\_{n+1}, Y\_{n-1}, X\_n \* (Y\_{n+1} - Y\_{n-1}). Includes sub-section ⑤ 962-2A(962-2) and sub-section ⑥ 964A(964-1).

Table with columns: 地番, NO, X\_n, Y\_n, Y\_{n+1}, Y\_{n-1}, X\_n \* (Y\_{n+1} - Y\_{n-1}). Includes sub-section ⑦ 966-1A(966-1).

Table with columns: 地番, NO, X\_n, Y\_n, Y\_{n+1}, Y\_{n-1}, X\_n \* (Y\_{n+1} - Y\_{n-1}). Includes sub-section ⑧ 966-2A(966-2) and sub-section ⑨ 1809-1A(1809-1).

Table with columns: 地番, NO, X\_n, Y\_n, Y\_{n+1}, Y\_{n-1}, X\_n \* (Y\_{n+1} - Y\_{n-1}). Includes sub-section ⑩ 966-1A(966-1).

Table with columns: 地番, NO, X\_n, Y\_n, Y\_{n+1}, Y\_{n-1}, X\_n \* (Y\_{n+1} - Y\_{n-1}). Includes sub-section ⑪ 966-1A(966-1).

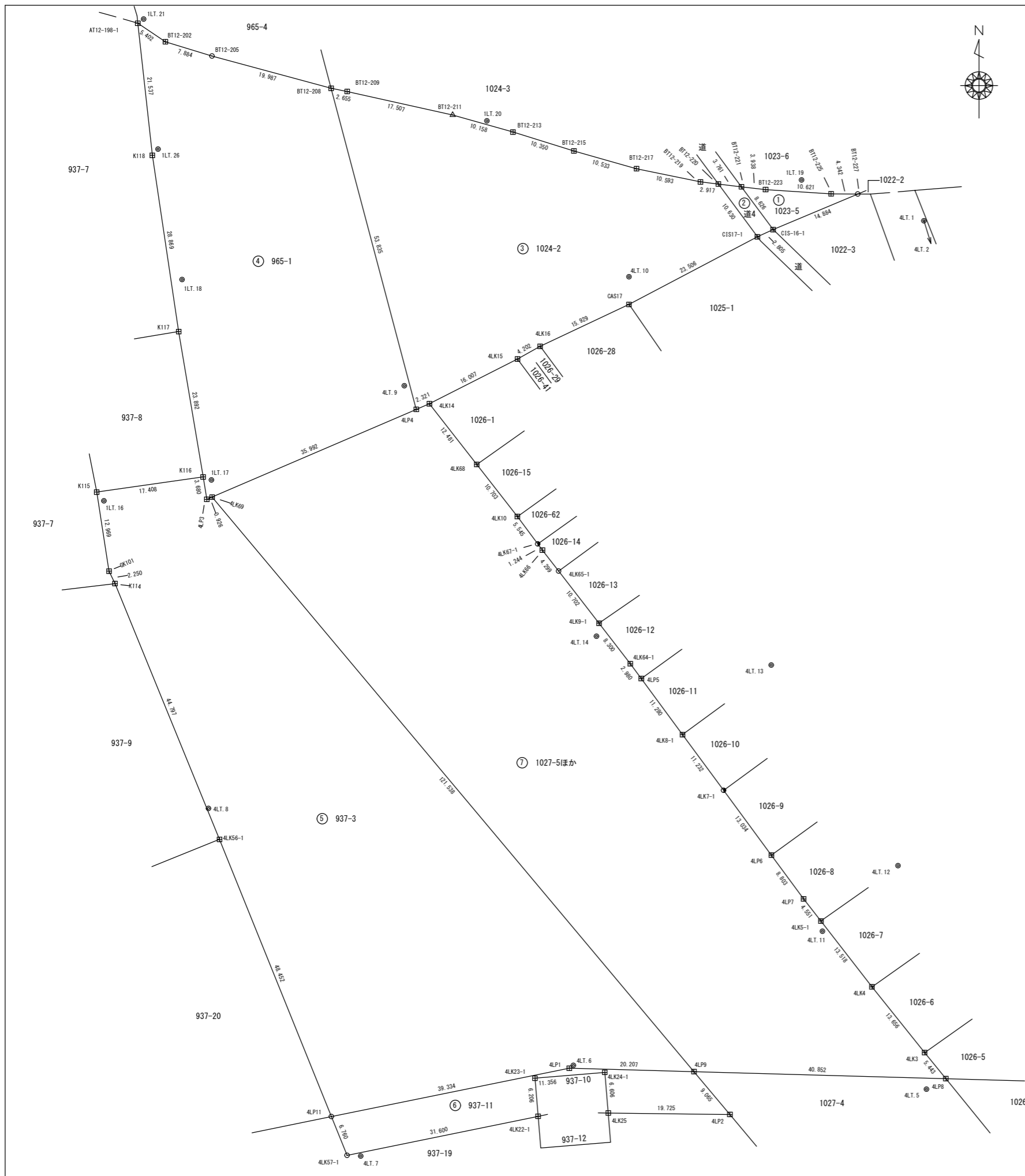
Table with columns: 地番, NO, X\_n, Y\_n, Y\_{n+1}, Y\_{n-1}, X\_n \* (Y\_{n+1} - Y\_{n-1}). Includes sub-section ⑫ 966-2A(966-2).

Table with columns: 地番, NO, X\_n, Y\_n, Y\_{n+1}, Y\_{n-1}, X\_n \* (Y\_{n+1} - Y\_{n-1}). Includes sub-section ⑬ 1809-1A(1809-1).

Table with columns: 総合計面積, 9927.7500135 m²

Table with columns: 地番, 面積. Lists areas for various sub-sections and their total.

Table with columns: 総合計面積, 9927.7500135 m²



**求積表**

地番	NO	Xn	Yn	Yn+1-Yn-1	Xn · (Yn+1-Yn-1)
1023-5	BT12-221	-41384.358	30356.648	-1.219	50447.532402
1023-5	BT12-223	-41384.815	30360.559	14.509	-600452.298325
1023-5	BT12-225	-41385.506	30371.157	14.940	-618299.459640
1023-5	BT12-227	-41385.525	30375.499	-9.379	388154.838975
1023-5	CIS-16-1	-41391.293	30361.778	-18.851	780267.264343
合計					117.895245
合計面積					58.9476225
地積					58.94

**求積表**

地番	NO	Xn	Yn	Yn+1-Yn-1	Xn · (Yn+1-Yn-1)
1023-5	BT12-221	-41384.358	30356.648	8.866	-368872.333670
1023-5	CIS-16-1	-41391.293	30361.778	2.583	-106913.709819
1023-5	BT12-220	-41382.919	30352.913	-2.583	106894.662777
合計					52.849108
合計面積					26.4240540
地積					26.42

**求積表**

地番	NO	Xn	Yn	Yn+1-Yn-1	Xn · (Yn+1-Yn-1)
1024-2	BT12-208	-41368.395	30290.159	-11.192	462995.078840
1024-2	BT12-209	-41368.917	30292.762	19.693	-814078.082481
1024-2	BT12-211	-41372.714	30309.852	26.864	-1111436.588896
1024-2	BT12-213	-41375.482	30319.626	19.656	-813276.474192
1024-2	BT12-215	-41378.559	30329.508	20.017	-828274.615500
1024-2	BT12-217	-41381.427	30339.643	20.508	-848650.304916
1024-2	BT12-219	-41383.576	30350.016	13.270	-549160.053520
1024-2	BT12-220	-41383.919	30352.913	9.215	-381352.813585
1024-2	CIS17-1	-41392.468	30359.231	-14.481	599404.329108
1024-2	CAS17	-41403.420	30338.432	-35.204	1457565.997880
1024-2	4LK15	-41410.220	30324.027	-18.072	748365.495840
1024-2	4LK16	-41412.272	30320.360	-17.941	742977.571952
1024-2	4LK14	-41419.516	30306.086	-16.406	679528.579496
1024-2	4LK4	-41420.433	30303.954	-15.927	659703.226391
合計					3711.354214
合計面積					1855.6771070
地積					1855.67

**求積表**

地番	NO	Xn	Yn	Yn+1-Yn-1	Xn · (Yn+1-Yn-1)
965-1	AT12-198-1	-41367.857	30256.840	2.128	-86909.519698
965-1	BT12-202	-41369.864	30263.328	12.025	-497394.309600
965-1	BT12-205	-41363.176	30270.865	26.831	-1108916.376256
965-1	BT12-208	-41368.395	30290.159	23.089	-1368828.822155
965-1	4LP4	-41420.433	30303.954	-19.274	793237.425642
965-1	4LK69	-41424.641	30270.885	-33.920	1405463.022750
965-1	4LP3	-41435.007	30270.034	-1.461	60536.545227
965-1	K116	-41431.378	30269.424	-4.569	189299.966082
965-1	K117	-41407.816	30285.465	-8.224	340537.878794
965-1	K118	-41379.264	30261.200	-6.625	274137.624000
合計					4284.355748
合計面積					2142.1778740
地積					2142.17

**求積表**

地番	NO	Xn	Yn	Yn+1-Yn-1	Xn · (Yn+1-Yn-1)
937-3	K115	-41433.826	30252.189	15.248	-631782.978848
937-3	K116	-41431.378	30269.424	17.845	-739342.940410
937-3	4LP3	-41435.007	30270.034	1.461	-60536.545227
937-3	4LK69	-41434.641	30270.885	78.924	-3270187.606284
937-3	4LP9	-41527.786	30348.958	57.874	-2403379.089664
937-3	4LP1	-41527.224	30328.759	-58.742	2439392.192208
937-3	4LP11	-41535.075	30290.216	-56.677	2354083.445775
937-3	4LK56-1	-41490.144	30272.082	-35.066	1454893.389504
937-3	K114	-41448.670	30255.150	-17.906	742179.885020
937-3	OK101	-41446.642	30254.176	-2.961	122723.506962
合計					8043.261736
合計面積					4021.6308880
地積					4021.63

**求積表**

地番	NO	Xn	Yn	Yn+1-Yn-1	Xn · (Yn+1-Yn-1)
937-11	4LP11	-41525.075	30290.216	26.013	-1495803.659975
937-11	4LP9	-41527.224	30328.759	58.742	-2439392.192208
937-11	4LP1	-41527.786	30348.958	26.022	-1089536.047292
937-11	4LP2	-41534.733	30354.781	-13.900	577232.788700
937-11	4LK25	-41534.494	30335.058	-20.270	841903.990980
937-11	4LK24-1	-41527.901	30334.511	-11.864	492987.017464
937-11	4LK23-1	-41528.840	30323.194	-10.803	448636.058820
937-11	4LK22-1	-41535.025	30323.708	-30.448	1264658.441200
937-11	4LK21-1	-41541.344	30292.746	-33.492	1391302.693248
合計					690.094337
合計面積					345.0471685
地積					345.04

**求積表**

地番	NO	Xn	Yn	Yn+1-Yn-1	Xn · (Yn+1-Yn-1)
1027-5ほか	4LK69	-41434.641	30270.885	-45.004	1864724.583564
1027-5ほか	4LP4	-41420.433	30303.954	35.201	-1458040.662033
1027-5ほか	4LK14	-41419.516	30306.086	9.810	-406325.451960
1027-5ほか	4LK68	-41429.356	30313.784	14.256	-590616.899136
1027-5ほか	4LK10	-41437.799	30320.342	9.890	-409819.832110
1027-5ほか	4LK67-1	-41442.246	30323.654	4.055	-168048.307530
1027-5ほか	4LK66	-41443.244	30324.287	3.372	-139746.618768
1027-5ほか	4LK65-1	-41446.646	30327.026	9.173	-380190.083758
1027-5ほか	4LK9-1	-41455.114	30333.570	11.619	-481666.969566
1027-5ほか	4LK64-1	-41461.682	30338.645	6.843	-283722.289926
1027-5ほか	4LP5	-41464.081	30340.413	8.456	-350703.197096
1027-5ほか	4LK8-1	-41473.163	30347.103	13.352	-553749.672376
1027-5ほか	4LK7-1	-41482.206	30353.785	14.393	-597053.399588
1027-5ほか	4LP7	-41492.700	30361.496	12.952	-537413.450400
1027-5ほか	4LP6	-41499.787	30366.717	8.018	-332745.292168
1027-5ほか	4LK5-1	-41503.377	30369.514	11.104	-460863.496208
1027-5ほか	4LK4	-41514.841	30377.821	16.842	-699179.478522
1027-5ほか	4LK3	-41524.701	30386.356	11.972	-497175.245072
1027-5ほか	4LP8	-41528.921	30389.784	-37.306	153398.597558
1027-5ほか	4LP9	-41527.786	30348.958	-118.909	4932623.505474
合計					8930.327008
合計面積					4400.1685040
地積					4400.16

**総合面積**

総合面積	12850.0731980	㎡
------	---------------	---

**地番**

地番	面積
1023-5	58.9476225
1024	26.4240540
1024-2	1855.6771070
965-1	2142.1778740
937-3	4021.6308880
937-11	345.0471685
1027-5ほか	4400.1685040

**座標値一覧表**

点名	X座標	Y座標
4LT.16	-41435.251	30253.361
4LT.17	-41431.892	30270.792
4LT.18	-41399.401	30266.014
4LT.19	-41383.278	30366.399
4LT.20	-41373.699	30315.423
4LT.21	-41357.195	30259.787
4LT.1	-41369.878	30386.254
4LT.2	-41464.286	30408.709
4LT.3	-41532.544	30440.833
4LT.4	-41546.537	30403.496
4LT.5	-41520.632	30386.670
4LT.6	-41526.782	30329.413
4LT.7	-41541.481	30294.965
4LT.8	-41485.134	30270.297
4LT.9	-41416.624	30302.021
4LT.10	-41398.945	30338.436
4LT.11	-41505.026	30369.793
4LT.12	-41494.424	30382.038
4LT.13	-41461.890	30361.491
4LT.14	-41457.227	30333.168

世界測地系 (測地成果2011)  
 座標高次系  
 縮尺係数0.999911  
 測量年月日 令和4年10月26日

**境界線の種類**

田	コンクリート杭
□	金属杭 (埋込)
△	金属杭 (貼付)
⊗	御影石
⊕	プラスチック杭
⊙	杭
⊚	刺み
⊛	計算点
⊜	基準点 (引照点)

**実測図**

図面名称	実測図	
所在地番	千葉市若葉区小倉町地内	
縮尺	1/500	作成年月日 令和4年11月21日
作成者	千葉市中央区都町六丁目番11号 土地家屋調査士 坂本晋介	