

Everyone shines in Chiba City, where the urban and nature are intertwined

The General Plan for Chiba City

2023-2032



What is the “General Plan” for Chiba City?

When thinking about our future, it is difficult to imagine when we consider factors like the declining working population, as a result of the low birth rate and aging population, the increased risk of climate change due to global warming and the advancement of technology.

Therefore, in order to make Chiba City both wonderful and somewhere where it is easy to live, the General Plan for Chiba City was established, which is a basic policy that outlines urban development in Chiba City for the coming decade.



Basic Concept

As a guideline for municipal administration, the plan portrays the ideal vision of the city, as well the fundamental principles and goals of permanent urban development, which do not alter, even in times of great change.

Fundamental Principle

Respect for human dignity and prioritizing citizens' lives

Fundamental Goal

A happy and lively city for everyone

Ideal Vision for Chiba City

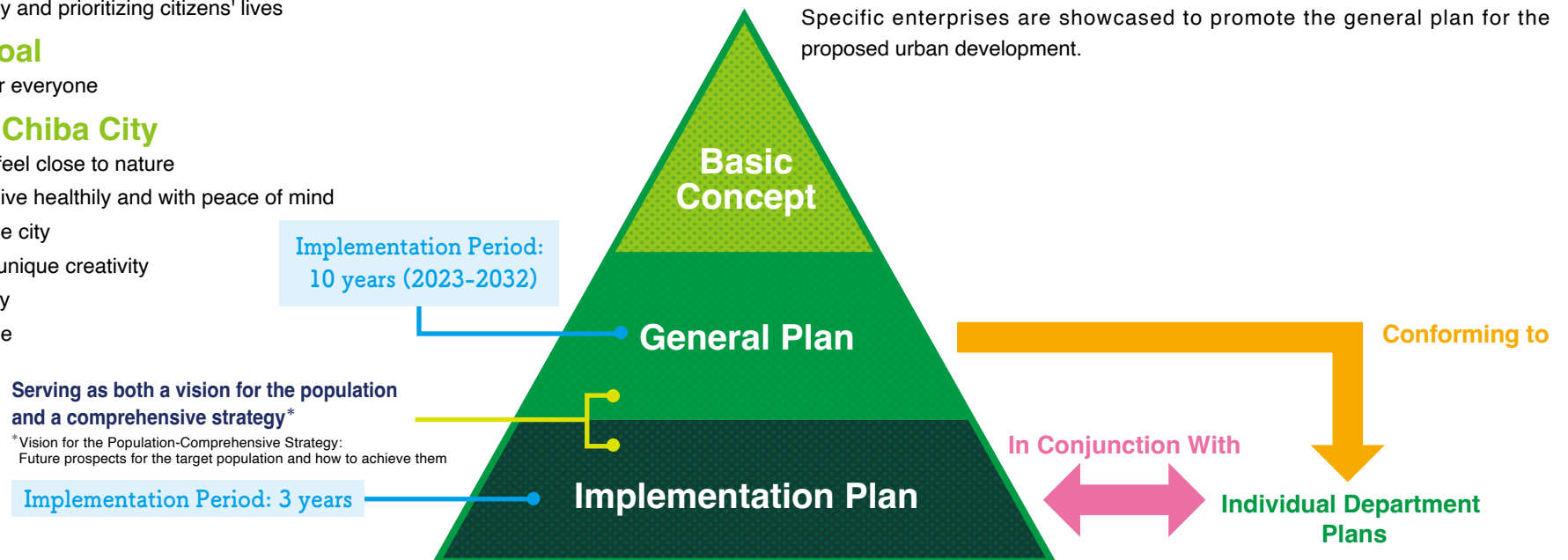
- (1) A city where you can feel close to nature
- (2) A city where you can live healthily and with peace of mind
- (3) A safe and comfortable city
- (4) A city which nurtures unique creativity
- (5) A lively and vibrant city
- (6) A city built by everyone

General Plan

In order to bring the objectives stated in the basic concept to reality, the plan shows the direction that future urban development policies and measures will take.

Implementation Plan

Specific enterprises are showcased to promote the general plan for the proposed urban development.



What kind of “treasures” are in Chiba City?

01

Nature enhanced with treasures dating back to the ancient Jōmon period

In Chiba City, there is an abundance of shell mounds, such as the Kasori Shell Mounds. These shell mounds reveal to us that the city has been blessed with a rich natural environment since the Jōmon period.

Today, the area still has beautiful natural features, with beaches for swimming, green inland mountains, rice fields in valleys and rivers.



02

A convenient and safe city with plenty of amenities

Chiba City has many places to work, which has led to many people living and working there. In addition, there are many places where you can enjoy learning, culture, arts and sports. The scenery is also beautiful along the seaside and inland areas, making Chiba City both a convenient and peaceful city to live in.

Since the Jōmon period, the area around what is currently known as Chiba City has been a place where people have lived alongside spectacular scenery. “The city's treasures” are the characteristics of the city which were fostered over time until Chiba City became a metropolis with about 980,000 inhabitants. These treasures must be passed on to future generations.

03

A hub born from diverse exchanges and diverse exchanges created because of the existence of a hub

As the centre of the prefecture, Chiba City has many railways and highways, allowing easy access from all over Chiba Prefecture so that many people can visit the city for work, school and shopping. With Chiba City as the heart of the prefecture, it plays a role in the formation of a living sphere and economic zone, thus providing opportunities for diverse exchanges.



04

An open-minded city nurtured by exchange and a warm and mild climate

Blessed with a warm climate, Chiba City has prospered as an economic hub, where many people can meet and exchange goods. After the Meiji period, the city developed into the prefecture's political centre and during the period of rapid economic growth after the war, many people from all over Japan moved to Chiba.

In the midst of all these changes and relocations to Chiba City, a sense of open-mindedness was nurtured and has since been passed down to the present day.

05

Proud to be an “ambitious city” which is ready for the future

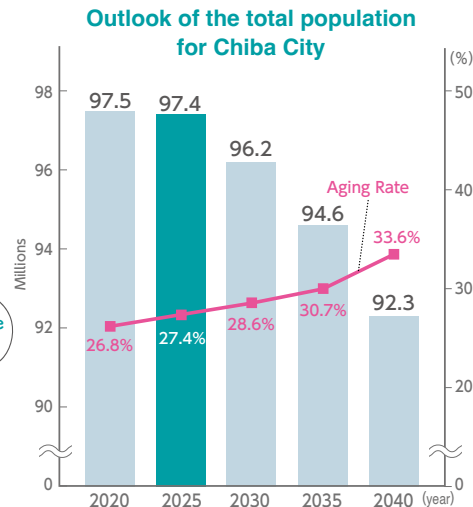
Civil aviation originates in Chiba City and in addition, Chiba City laid the foundation for the development of Japan's heavy industry.

Furthermore, Chiba City is a city which is not afraid of taking on challenges. This includes the preservation of the Kasori Shell Mounds, which has greatly impacted the way in which cultural properties are protected, as well as demonstrations of future technology which will be utilized by the National Strategic Special Zone System.

1 Population Change

The total population of the city is expected to peak in the first half of the 2020s, before then declining.

In addition, the working age population is expected to decrease, while the number of people aged 65 and over is expected to increase significantly.



2 Increased Risk of Disaster

It is essential to promote urban development in response to the risks posed by wind and flood damage, which are becoming more severe due to climate change and global warming, a predicted earthquake in Tokyo and the risks associated with infectious diseases such as the novel corona virus.



What will society look like in 2040?

3 Technological Advancements

Technology such as artificial intelligence will develop dramatically, thus bringing about convenience for each and every citizen. In addition, every citizen will benefit from digitalization, as it is expected to solve social issues and aid environmental improvement.



4 Achieving the Sustainable Development Goals

In addition to global issues, society is facing various social issues such as a declining birthrate, an aging population and a widening gap between rich and poor.

In order to combat these issues and create a society in which “nobody is left behind”, it is essential that everyone works together to attain these goals.



SUSTAINABLE DEVELOPMENT GOALS



What kind of city is Chiba City striving to become?

Chiba City has inherited a long history. Those of who reside in Chiba City must work to promote the splendour and charm of the city, so that it can be passed on to future generations. Let's share the vision of Chiba City 10 years from now and work together to develop the city.

What Chiba City
Could Potentially Look Like
10 Years From Now

Everyone shines in Chiba City, where the urban and nature are intertwined

In order to make this vision a reality, we have decided to focus on the following **four** strategic initiatives.

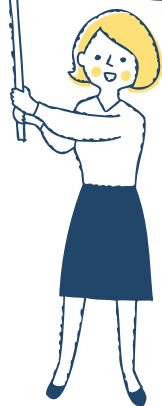
Sustainable community
development that will
be passed on for the
next 100 years

Creating and using
recreation to foster
creative urban
development

Connecting with the
world and making the
most of diversity to
create an inclusive* city

Taking advantage
of the accumulation
of urban functions
and revitalizing the
local economy and
community

* "Inclusivity" can be translated as "embracing everyone and everything". "Inclusive urban development" aims to create a community where "everyone can plan an active role" and where "no one gets left behind", regardless of who they are.





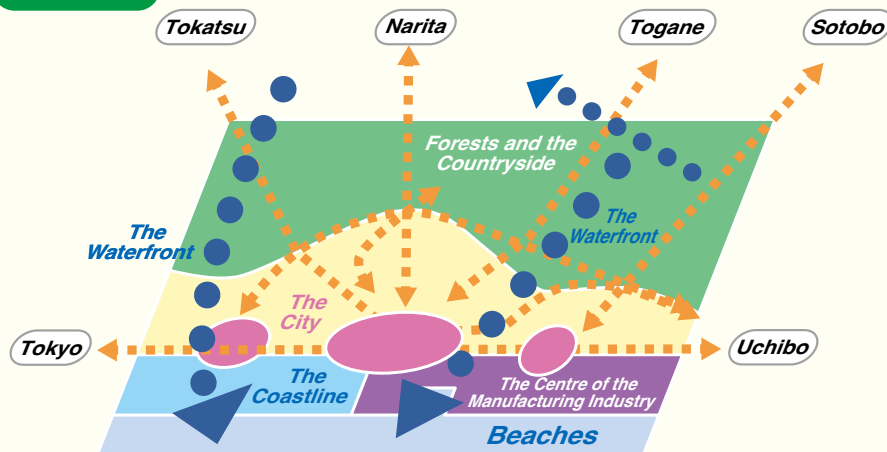
What sort of city has Chiba set its sights on becoming?

As a whole, Chiba City is founded upon lush greenery and waterfronts, with the social services and optimized public transportation services available enhancing various economic activities and people's lives. In this way, “a Chiba City-Style Compact Plus Network” will become a reality, becoming a place where people can continue to live with peace of mind, even in the midst of a declining birth rate and population.

A Chiba City-Style Compact Plus Network*

Let's live in the vibrant city of Chiba, with the summer breeze of the Shimousa plateau and the beaches of Tokyo Bay!

Future Vision



* **A Compact Plus Network:** While maintaining the vitality of the region, the idea is to review the structure of the entire city, such as medical, welfare and commercial facilities and housing being located near each other, as well as how residents can access these facilities through public transportation.

What are Chiba City's wards endeavoring to become?

By utilizing and developing the characteristics of each ward in accordance with the “Four Strategic Initiatives”, the attractiveness of each ward will be elevated, leading to an enhancement of the appeal and vitality of the whole of Chiba City.



Hanamigawa Ward ..

What we should aim for :

A peaceful and comfortable town, surrounded by rivers, greenery and flowers

Current Efforts :

- The creation of a peaceful and comfortable lifestyle where one can encounter nature, such as rivers and flowers
- The provision of suburban outdoor activities through a network of local resources centered around the Hanamigawa River
- The revitalization of the local economy through industrial clusters that take advantage of access to the motorway



Mihama Ward

What we should aim for :

A town where one can enjoy the beach and connect with the world

Current Efforts :

- The establishment of an attractive urban beach which has the advantage of being accessible from Tokyo
- The importance of having a leading role in the creation of an inclusive city which embraces diversity
- The implementation of future technology and the creation of new value, focusing on Makuhari New City

Hanamigawa Ward

Inage Ward

Mihama Ward

Chuo Ward

Wakaba Ward

Midori Ward



Inage Ward

What we should aim for:

A district of dynamic learning and creativity

Current Efforts:

- The establishment of an educational district which avails of an enhanced residential and academic environment
- The establishment of a personnel training base which nurtures and produces diverse talents through the utilization of educational institutions



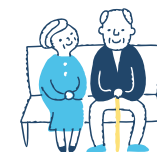
Wakaba Ward

What we should aim for:

The coexistence of an area bestowed with nature's blessings and the legacy of the Jōmon period

Current Efforts:

- The promotion of agriculture and the creation of an environment where people are able to enjoy nature in the locality and regional characteristics
- Inheriting the spirit of coexistence with nature and engaging with the Kasori Shell Mounds
- The promotion of exchange between cities and agricultural villages by making use of regional resources in inland areas



Midori Ward

What we should aim for:

A spacious and pleasant town in harmony with the countryside

Current Efforts:

- Availing of the beautiful rich scenery and residential environment, so that the urban functions and nature are in harmony with each other
- Making the most of spacious areas so that industrial development and having a lifestyle close to both work and home can become a reality
- The creation of a variety of activities which utilize resources such as the "Showa no Mori Park"



Chuo Ward

What we should aim for:

The establishment of a bustling and cultural town where people come and go

Current Efforts:

- Playing a role in wide-area regional revitalization by capitalizing on the prefecture's optimum district
- The creation of further exchange and activity through the establishment of various urban functions
- The creation of a culture and the development of leaders by utilizing the accumulated cultural facilities





What is currently being done?

The vision for the city is “everyone shines in Chiba City, where the urban and rural are intertwined”. In order to make this vision a reality, citizens, organizations, businesses, universities and the government must work together in order to continue promoting urban development.

Making the Future of Chiba City a Reality

Four Strategic Initiatives

- Sustainable community development that will be passed on for the next 100 years
- Creating and using recreation to foster creative urban development
- Connecting with the world and making the most of diversity to create an inclusive city
- Taking advantage of the accumulation of urban functions and revitalizing the local economy and community

Empowering Urban Development

This is when a wide range of constituents, such as citizens, take on the challenge of community development through further collaboration with other citizens, by coordinating and reviewing the division of public and private roles.



SUSTAINABLE DEVELOPMENT GOALS

Aside from the “General Plan” for urban development, urban development is also being promoted in unison with the planning of interdisciplinary cooperation in eight fields.



1 Environment and Nature

In response to climate change, the establishment of a sustainable city which coexists with beautiful nature.

Policy Agenda



Policy 1 | The creation of a sustainable society through the promotion of environmental conservation measures, such as decarbonization

1. Promoting measures against global warming
2. Conserving nature and the environment in which we live
3. Reducing waste and ensuring proper disposal in consideration of the environmental impact

Policy 2 | The creation of an environment where one can feel a connection by living close to nature and the waterfront

1. Utilization and enrichment of the greenery and waterfront
2. Conservation and creation of green areas
3. Conservation and utilization of the waterside area

2 Safety and Security

In response to various risks posed by disasters, a city where people can live safely and with peace of mind must be ensured.

Policy Agenda

Policy 1 | The development of disaster-resistant infrastructure

1. Promoting wind and flood damage prevention measures
2. Frequent maintenance and management of social infrastructure in response to earthquakes

Policy 3 | The strengthening and enhancement of firefighting and emergency services

1. Enhancing and strengthening the impact of firefighting
2. Improving the response of the emergency services
3. Promoting fire prevention measures

Policy 2 | The enhancement of disaster resilience through the collaboration of various constituents

1. Strengthening the disaster response system
2. Increasing citizen's disaster prevention awareness and improving local disaster prevention measures

Policy 4 | Ensuring the safety and security of citizens

1. Promoting crime prevention measures
2. Promoting traffic safety
3. Stabilization and improvement of consumer's lifestyles

3 Health and Welfare

The establishment of a lively city, where people can live a healthy lifestyle with peace of mind.

Policy Agenda

Policy 1 | The creation of a society where health is a priority

1. Promoting health development
2. Improving the healthcare system
3. Establishment of a safe, secure and hygienic living environment

Policy 3 | The creation of a society where everyone is treated equally, regardless if they have a disability or not

1. Promoting the understanding and social participation of those with disabilities
2. Establishing an environment where people can live independently
3. Increased support for families raising children with disabilities
4. Improvement of the mental health consultation and support system

Policy 2 | The creation of a society where senior citizens can live an active lifestyle

1. Promoting citizens to get actively involved in the community
2. Establishing a community where people can live with peace of mind
3. Establishing a society which caters to dementia
4. Developing the Long-Term Care Insurance service system

Policy 4 | The creation of a society in which each resident has a purpose in the community

1. Supporting other citizens and promoting the development of a vibrant community
2. Creating a comprehensive support system



4

Child-rearing and Education

The creation of a city where children can grow up with dreams and caring hearts, so that one day they will lead the way for the future.

Policy Agenda

Policy 1

The creation of an environment where it is easy to give birth to and raise children

1. Enhancing antenatal and childrearing support
2. Improving the childcare facilities available to ease child rearing
3. Improving the support for families raising children in difficult situations
4. Strengthening child abuse prevention measures
5. Increased support for families raising children with disabilities



Policy 2

Nurturing children so that they can build their own futures

1. Enrichment of future-thinking education
2. Enhancing educational environments which support learning
3. Enhancing additional support in schools
4. Provision of a place for children to go after school, so that they can avail of various enriching experiences and activities
5. Encouraging children and young people to think about society and to develop their behaviour

5

Community

The establishment of a local community which supports urban development and diversity.

Policy Agenda

Policy 1

The creation of an environment where everyone has a role and individuality is accepted

1. Exercising diversity to promote inclusive urban development
2. Making a multicultural society a reality

Policy 2

The promotion of community development through the collaboration of both government and citizen-led organizations

1. Promoting citizen-led sustainable community development
2. Promoting community activities through lifelong learning

6

Arts, Culture and Sports

The establishment of a city rich in creativity, achievable through the promotion of citizen's art, culture and sports.

Policy Agenda

Policy 1

The creation of an environment in which art and culture can be created and shared

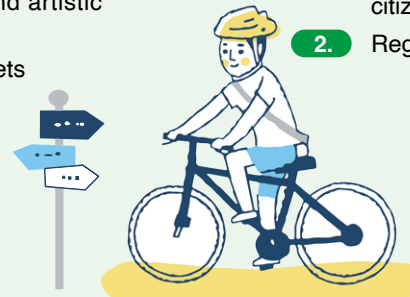
1. Creating and supporting cultural and artistic activities
2. Conserving and utilizing cultural assets



Policy 2

The creation of a sports-friendly environment

1. Promoting and supporting sports activities for citizens
2. Regional revitalization focused on sports



7

City and Transportation

The establishment of a charming and caring city, where comfortable living and lively interactions between citizens are supported.

Policy Agenda

Policy1 | The promotion of sustainable and attractive urban development

1. Promoting beautiful and comfortable urban development
2. Improving the charms of the three downtown areas
3. Discovering and utilizing local resources
4. Strengthening wide-area cooperation

Policy3 | The utilization of technology for urban development.

1. Promoting the “smart city”
2. Accelerating the implementation of new technology and mechanisms into society

Policy2 | The establishment of a network which increases the city's potential

1. The formation of a sustainable public transport network
2. The formation of a road network
3. Establishment of a safe and secure mobile environment

Policy4 | The creation of a base which assists citizens in their everyday life.

1. Enhancement of the residential environment and infrastructure
2. Promoting sustainable water and sewerage projects

8

Regional Economy

The establishment of a city where local skills and industries are supported, leading to an increased value of the regional economy.

Policy Agenda

Policy1 | Supporting and developing regional industries

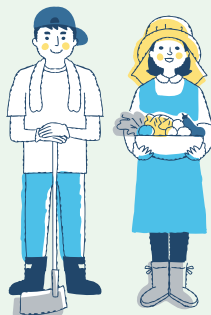
1. Creating new leaders in regional economies
2. Strengthening management capabilities to establish a sustainable regional economy
3. Securing and increasing employment, as well as strengthening human resource development
4. Increased collaboration between industry, academia and the government

Policy3 | Supporting the sustainable development of agriculture and forestry

1. Growing the agriculture industry
2. Securing and supporting agricultural leaders
3. Conserving and utilizing the many functions offered by agriculture and forestry

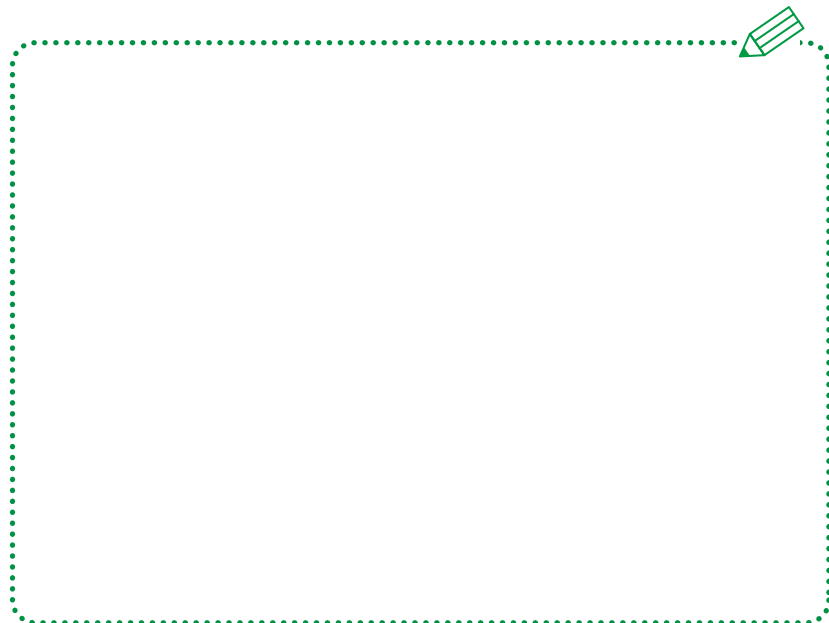
Policy2 | The enhancement of the city's charms through the promotion of tourism and MICE

1. Increasing the value of touristic resources
2. Promoting MICE



The future of Chiba City – Let's build it together!

Each person has their own version of Chiba City that they would like to achieve, and working together towards that goal will lead to **empowered urban development**. Let's think about the actions that we can take to create the future of Chiba City.



Edited/Published: March 2023

Policy Planning Division, Comprehensive Policy Department, Comprehensive Policy Bureau, City of Chiba
1-1, Chibaminato, Chuo-ku, Chiba-shi, Chiba, 260-8722, Japan

Tel: 043-245-5046 FAX: 043-245-5534 Email: kikaku.POC@city.chiba.lg.jp

There are more details about the plan available on the city's website.

